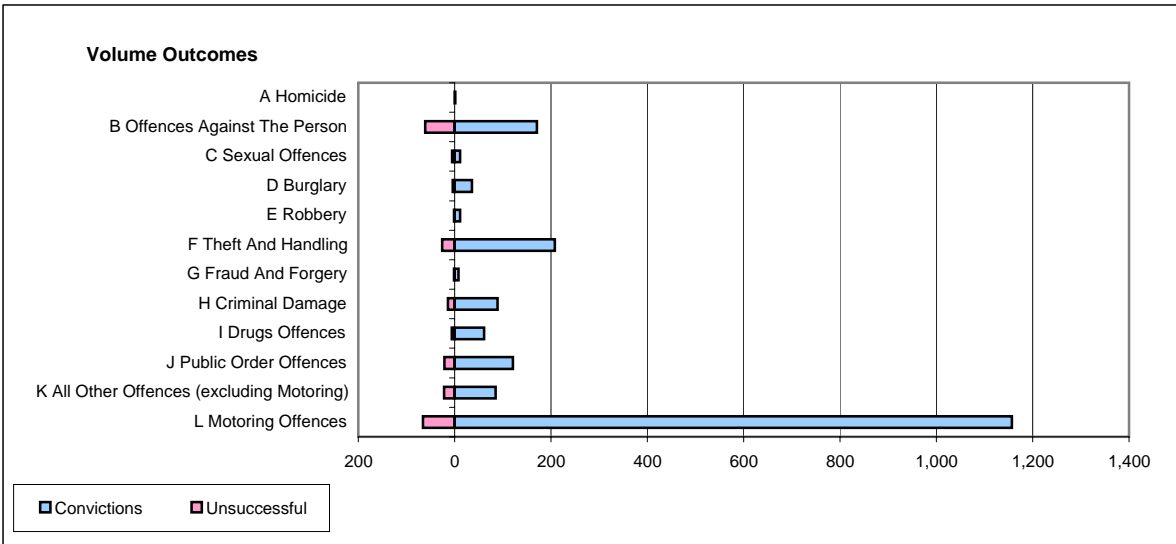
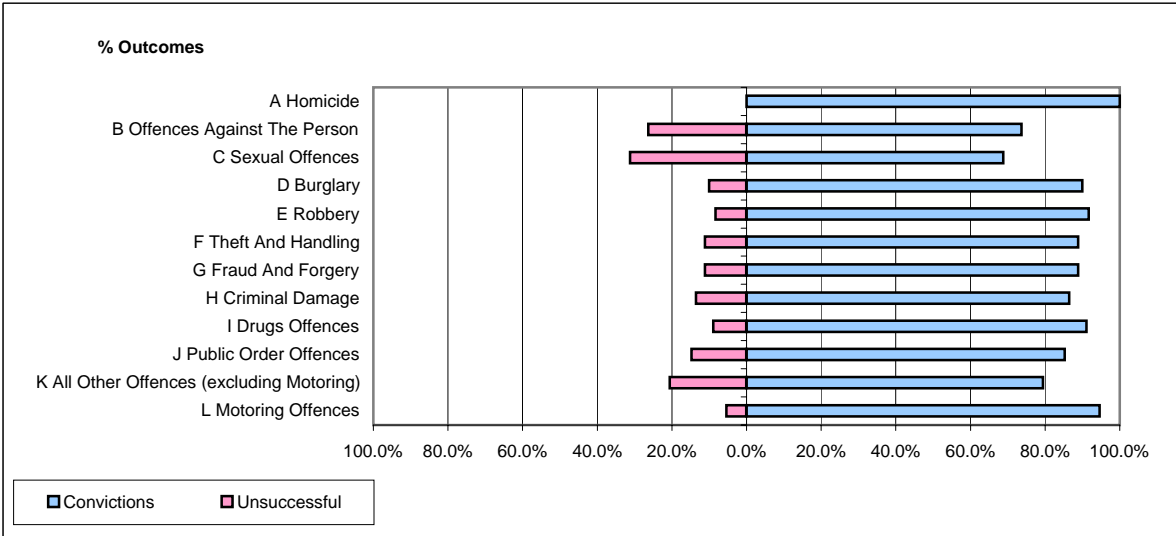


CPS OUTCOMES BY PRINCIPAL OFFENCE CATEGORY

April 2006

P20-Kent



	Convictions		Unsuccessful	
	Number of Defendants	%	Number of Defendants	%
A Homicide	1	100.0%	0	0.0%
B Offences Against The Person	171	73.7%	61	26.3%
C Sexual Offences	11	68.8%	5	31.3%
D Burglary	36	90.0%	4	10.0%
E Robbery	11	91.7%	1	8.3%
F Theft And Handling	208	88.9%	26	11.1%
G Fraud And Forgery	8	88.9%	1	11.1%
H Criminal Damage	89	86.4%	14	13.6%
I Drugs Offences	61	91.0%	6	9.0%
J Public Order Offences	121	85.2%	21	14.8%
K All Other Offences (excluding Motoring)	85	79.4%	22	20.6%
L Motoring Offences	1,157	94.6%	66	5.4%
Admin Finalisations	0	0.0%	36	100.0%
TOTAL	1,959	88.2%	263	11.8%