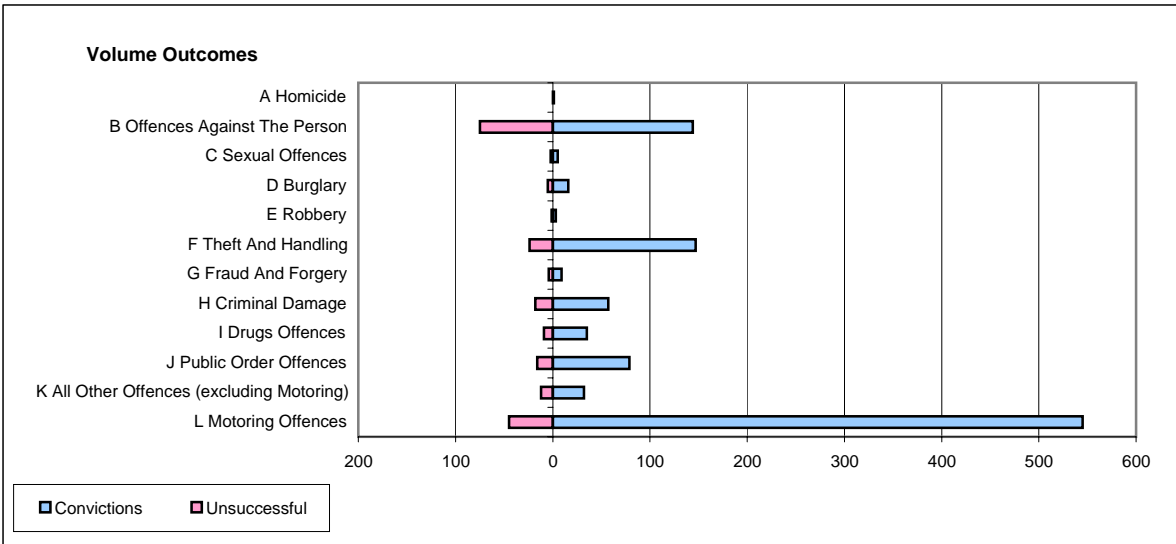
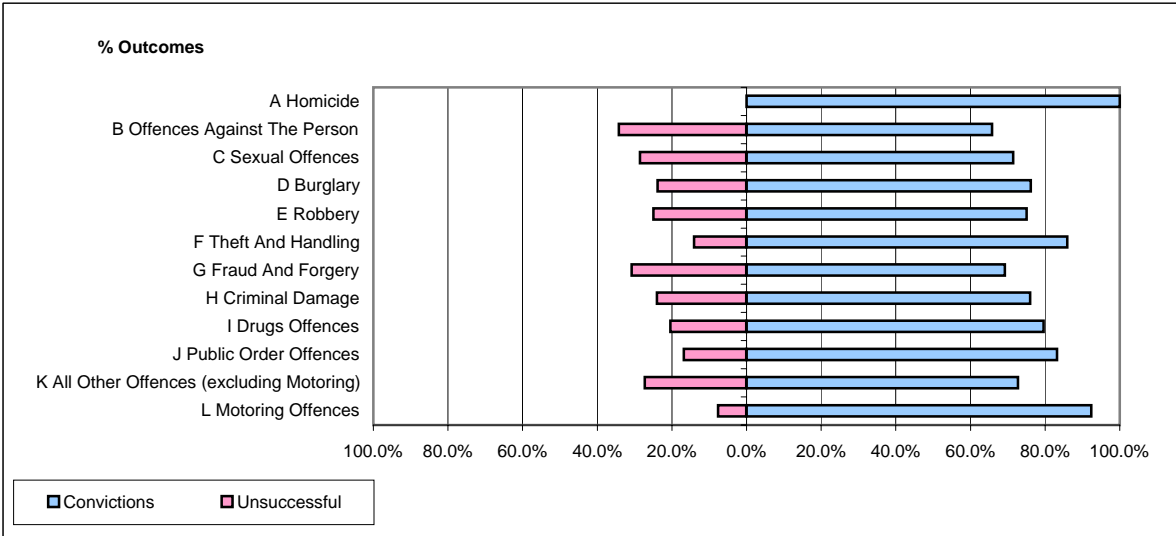


CPS OUTCOMES BY PRINCIPAL OFFENCE CATEGORY

April 2006

P18-Hertfordshire



| | Convictions | | Unsuccessful | |
|--|----------------------|---------------|----------------------|---------------|
| | Number of Defendants | % | Number of Defendants | % |
| A Homicide | 1 | 100.0% | 0 | 0.0% |
| B Offences Against The Person | 144 | 65.8% | 75 | 34.2% |
| C Sexual Offences | 5 | 71.4% | 2 | 28.6% |
| D Burglary | 16 | 76.2% | 5 | 23.8% |
| E Robbery | 3 | 75.0% | 1 | 25.0% |
| F Theft And Handling | 147 | 86.0% | 24 | 14.0% |
| G Fraud And Forgery | 9 | 69.2% | 4 | 30.8% |
| H Criminal Damage | 57 | 76.0% | 18 | 24.0% |
| I Drugs Offences | 35 | 79.5% | 9 | 20.5% |
| J Public Order Offences | 79 | 83.2% | 16 | 16.8% |
| K All Other Offences (excluding Motoring) | 32 | 72.7% | 12 | 27.3% |
| L Motoring Offences | 545 | 92.4% | 45 | 7.6% |
| Admin Finalisations | 0 | 0.0% | 25 | 100.0% |
| TOTAL | 1,073 | 82.0% | 236 | 18.0% |