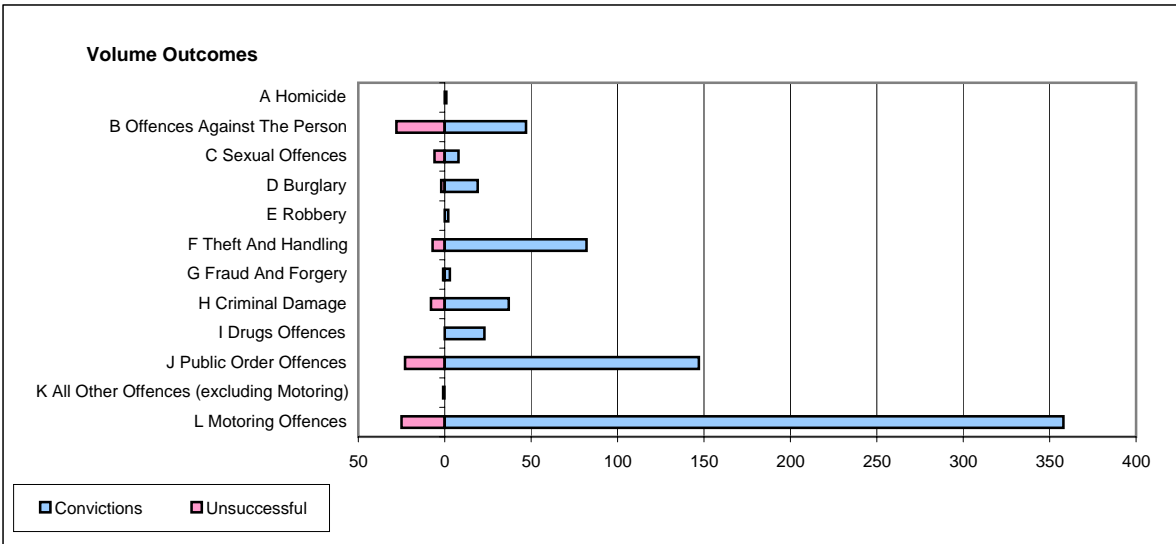
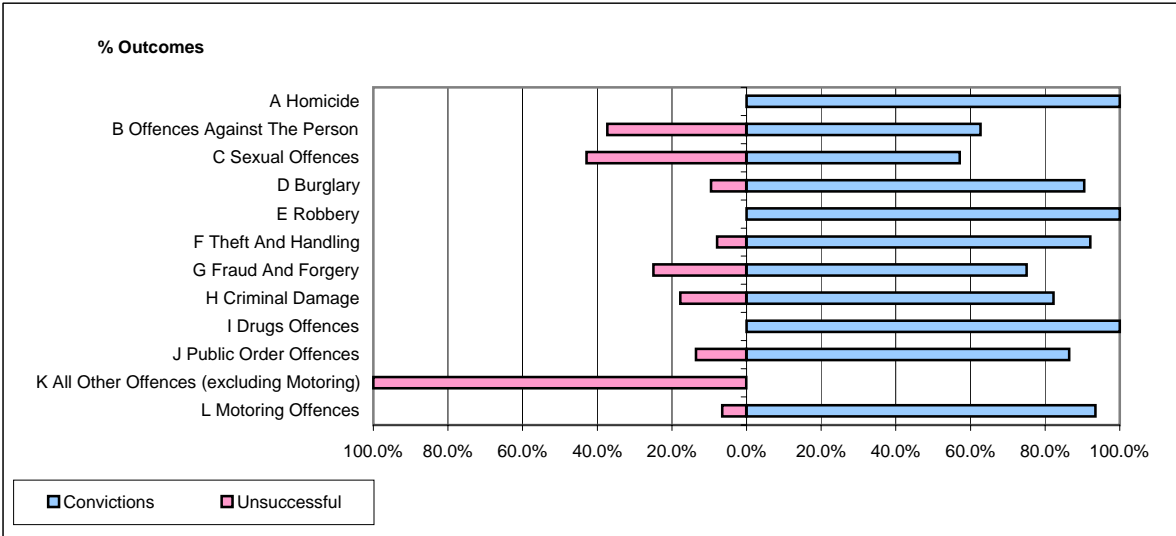


CPS OUTCOMES BY PRINCIPAL OFFENCE CATEGORY

April 2006

P16-Gwent



	Convictions		Unsuccessful	
	Number of Defendants	%	Number of Defendants	%
A Homicide	1	100.0%	0	0.0%
B Offences Against The Person	47	62.7%	28	37.3%
C Sexual Offences	8	57.1%	6	42.9%
D Burglary	19	90.5%	2	9.5%
E Robbery	2	100.0%	0	0.0%
F Theft And Handling	82	92.1%	7	7.9%
G Fraud And Forgery	3	75.0%	1	25.0%
H Criminal Damage	37	82.2%	8	17.8%
I Drugs Offences	23	100.0%	0	0.0%
J Public Order Offences	147	86.5%	23	13.5%
K All Other Offences (excluding Motoring)	0	0.0%	1	100.0%
L Motoring Offences	358	93.5%	25	6.5%
Admin Finalisations	0	0.0%	16	100.0%
TOTAL	727	86.1%	117	13.9%