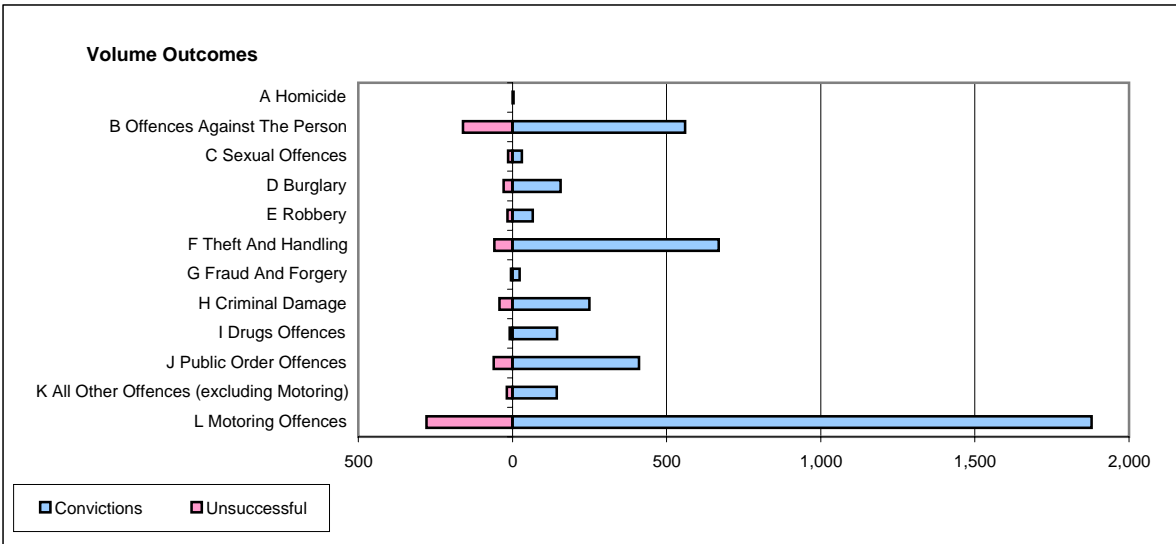
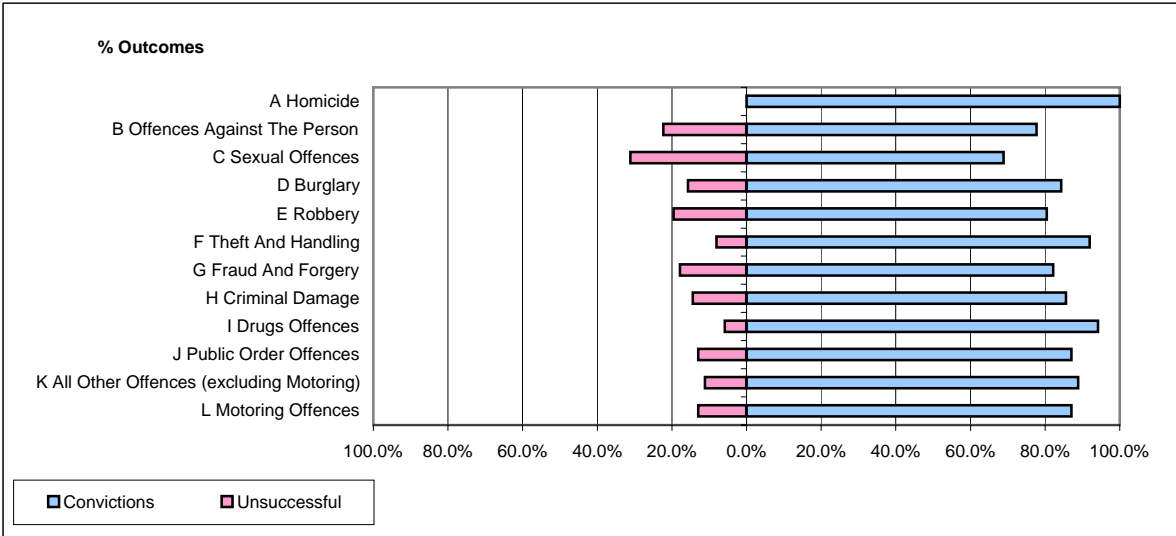


CPS OUTCOMES BY PRINCIPAL OFFENCE CATEGORY

April 2006

P15-GreaterManchester



	Convictions		Unsuccessful	
	Number of Defendants	%	Number of Defendants	%
A Homicide	4	100.0%	0	0.0%
B Offences Against The Person	560	77.7%	161	22.3%
C Sexual Offences	31	68.9%	14	31.1%
D Burglary	156	84.3%	29	15.7%
E Robbery	66	80.5%	16	19.5%
F Theft And Handling	669	91.9%	59	8.1%
G Fraud And Forgery	23	82.1%	5	17.9%
H Criminal Damage	250	85.6%	42	14.4%
I Drugs Offences	145	94.2%	9	5.8%
J Public Order Offences	410	87.0%	61	13.0%
K All Other Offences (excluding Motoring)	144	88.9%	18	11.1%
L Motoring Offences	1,879	87.1%	279	12.9%
Admin Finalisations	0	0.0%	181	100.0%
TOTAL	4,337	83.2%	874	16.8%