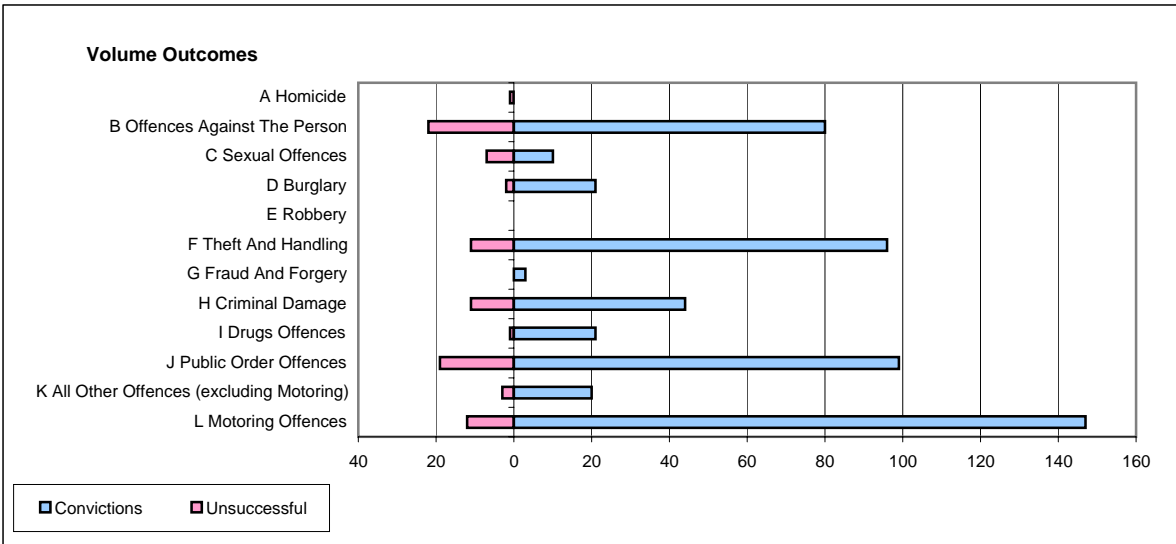
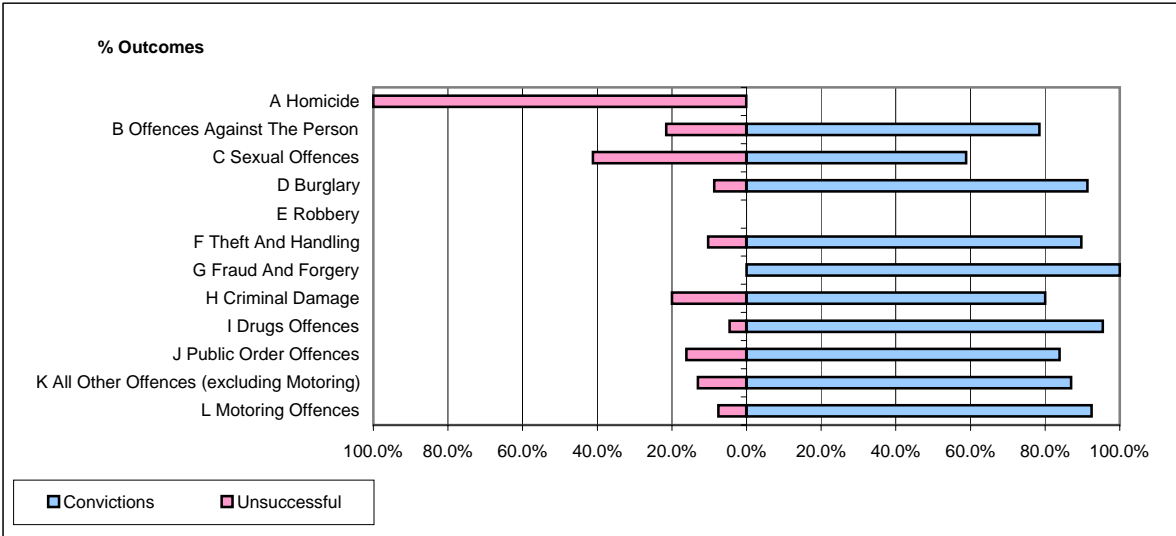


CPS OUTCOMES BY PRINCIPAL OFFENCE CATEGORY

April 2006

P11-Durham



	Convictions		Unsuccessful	
	Number of Defendants	%	Number of Defendants	%
A Homicide	0	0.0%	1	100.0%
B Offences Against The Person	80	78.4%	22	21.6%
C Sexual Offences	10	58.8%	7	41.2%
D Burglary	21	91.3%	2	8.7%
E Robbery	0	#DIV/0!	0	#DIV/0!
F Theft And Handling	96	89.7%	11	10.3%
G Fraud And Forgery	3	100.0%	0	0.0%
H Criminal Damage	44	80.0%	11	20.0%
I Drugs Offences	21	95.5%	1	4.5%
J Public Order Offences	99	83.9%	19	16.1%
K All Other Offences (excluding Motoring)	20	87.0%	3	13.0%
L Motoring Offences	147	92.5%	12	7.5%
Admin Finalisations	0	0.0%	11	100.0%
TOTAL	541	84.4%	100	15.6%