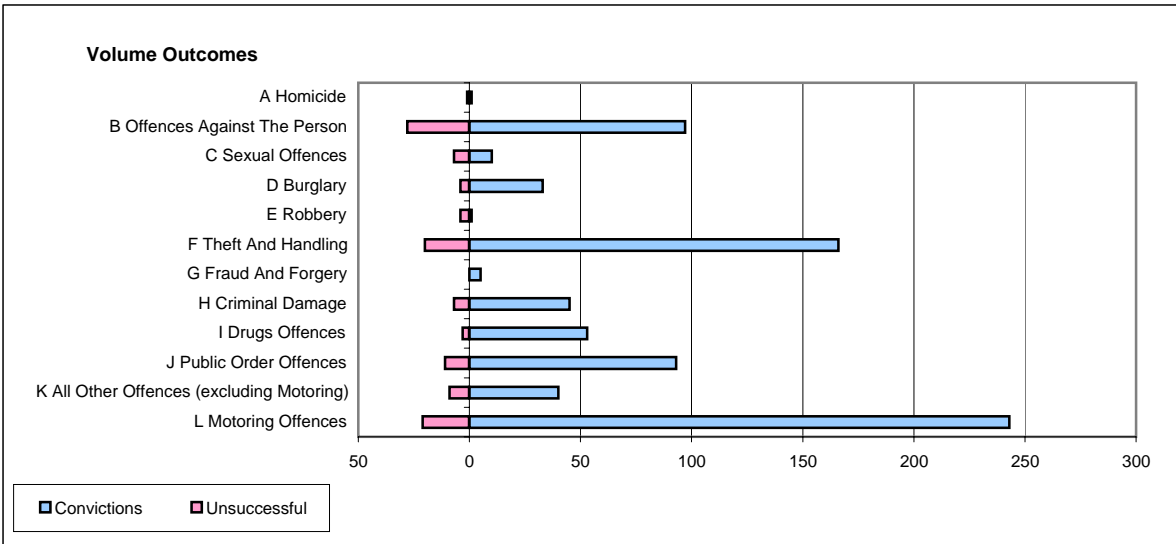
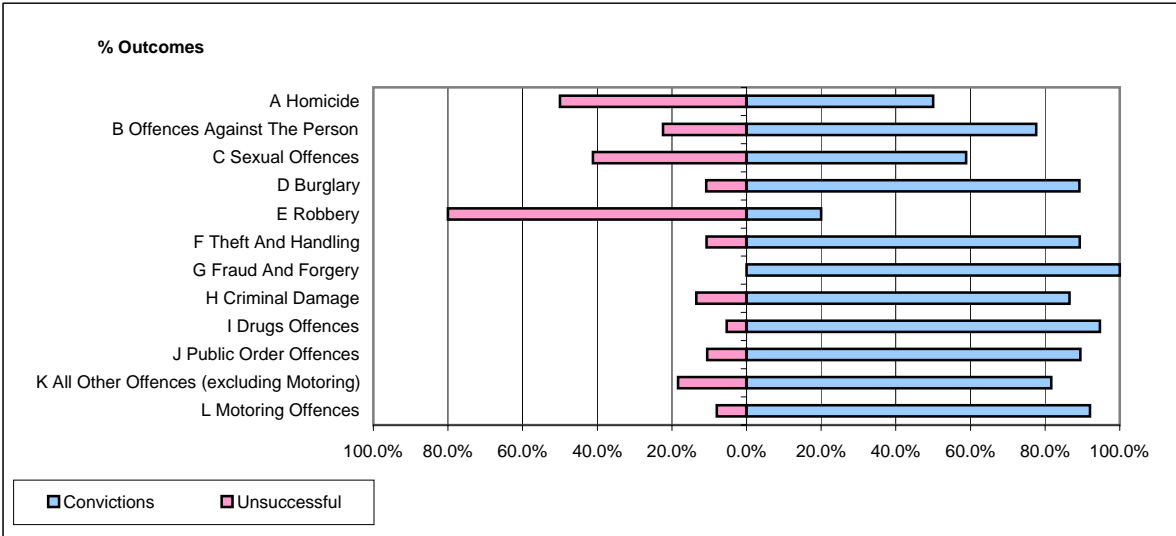


CPS OUTCOMES BY PRINCIPAL OFFENCE CATEGORY

April 2006

P06-Cleveland



	Convictions		Unsuccessful	
	Number of Defendants	%	Number of Defendants	%
A Homicide	1	50.0%	1	50.0%
B Offences Against The Person	97	77.6%	28	22.4%
C Sexual Offences	10	58.8%	7	41.2%
D Burglary	33	89.2%	4	10.8%
E Robbery	1	20.0%	4	80.0%
F Theft And Handling	166	89.2%	20	10.8%
G Fraud And Forgery	5	100.0%	0	0.0%
H Criminal Damage	45	86.5%	7	13.5%
I Drugs Offences	53	94.6%	3	5.4%
J Public Order Offences	93	89.4%	11	10.6%
K All Other Offences (excluding Motoring)	40	81.6%	9	18.4%
L Motoring Offences	243	92.0%	21	8.0%
Admin Finalisations	0	0.0%	12	100.0%
TOTAL	787	86.1%	127	13.9%