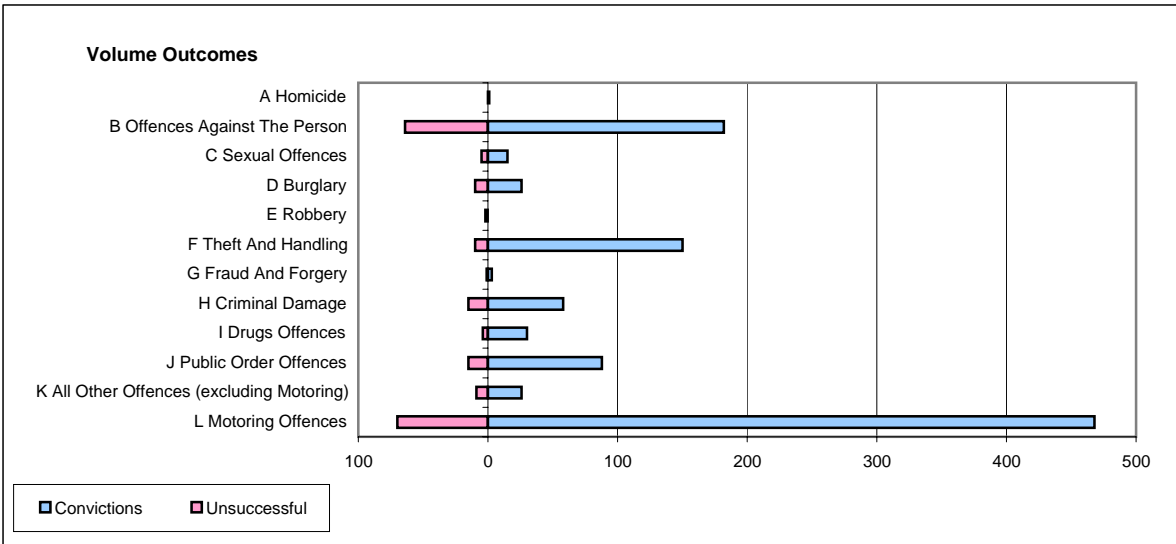
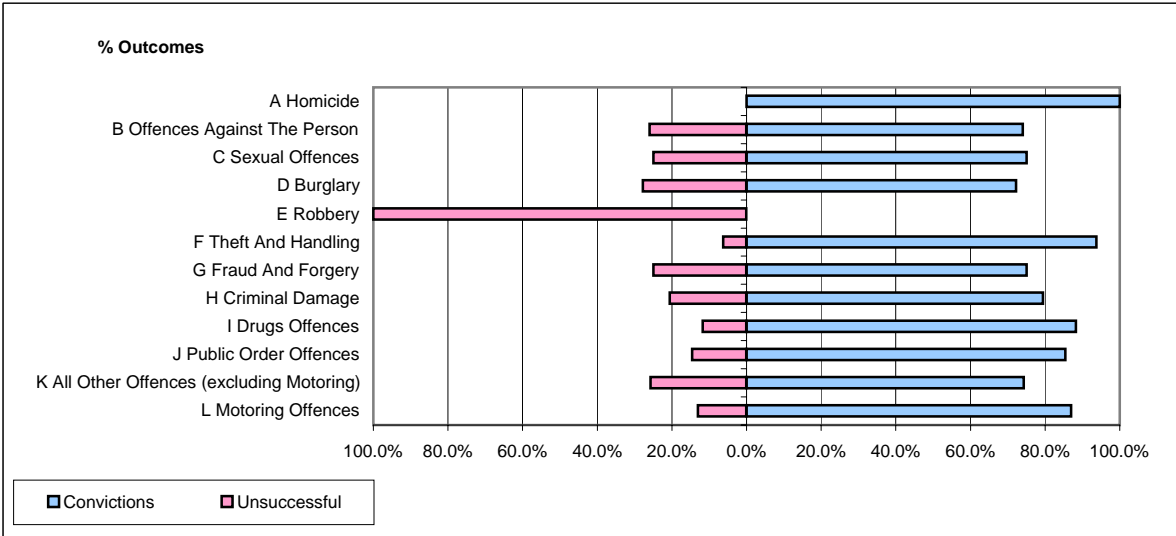


CPS OUTCOMES BY PRINCIPAL OFFENCE CATEGORY

April 2006

P04-Cheshire



	Convictions		Unsuccessful	
	Number of Defendants	%	Number of Defendants	%
A Homicide	1	100.0%	0	0.0%
B Offences Against The Person	182	74.0%	64	26.0%
C Sexual Offences	15	75.0%	5	25.0%
D Burglary	26	72.2%	10	27.8%
E Robbery	0	0.0%	2	100.0%
F Theft And Handling	150	93.8%	10	6.3%
G Fraud And Forgery	3	75.0%	1	25.0%
H Criminal Damage	58	79.5%	15	20.5%
I Drugs Offences	30	88.2%	4	11.8%
J Public Order Offences	88	85.4%	15	14.6%
K All Other Offences (excluding Motoring)	26	74.3%	9	25.7%
L Motoring Offences	468	87.0%	70	13.0%
Admin Finalisations	0	0.0%	15	100.0%
TOTAL	1,047	82.6%	220	17.4%