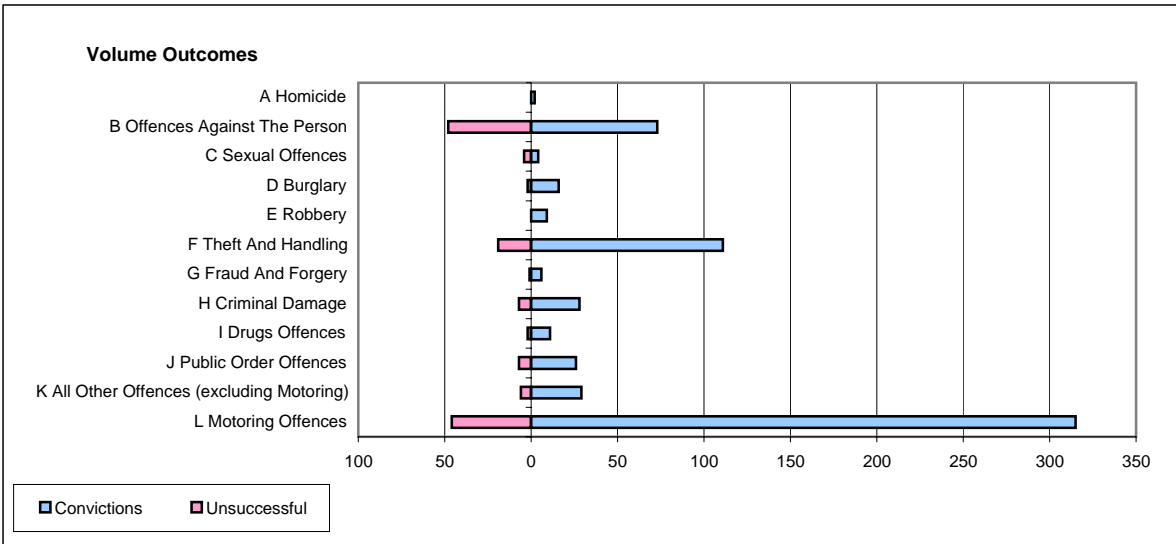
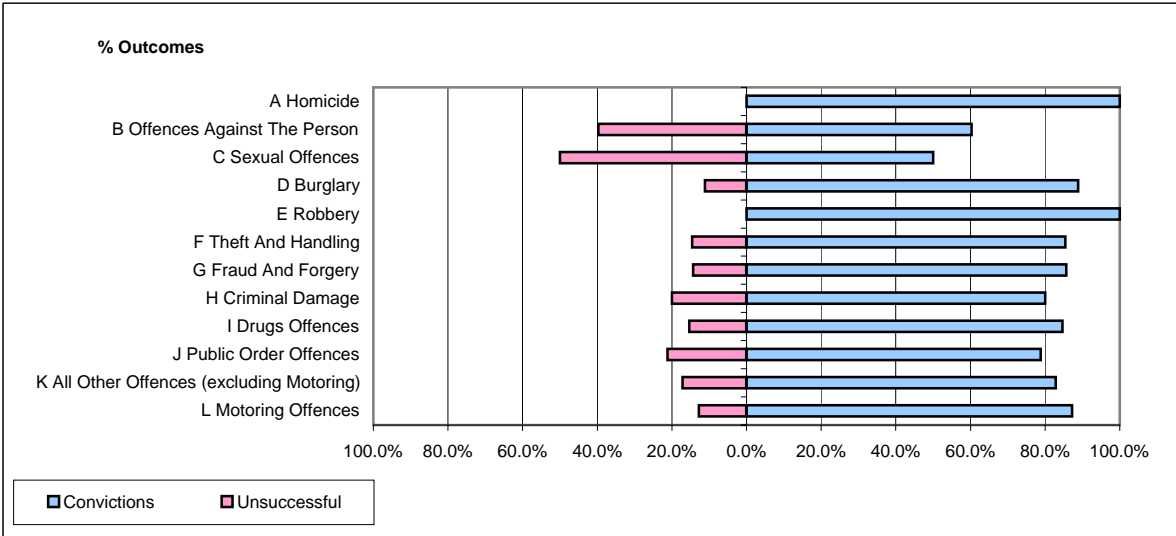


**CPS OUTCOMES BY PRINCIPAL OFFENCE CATEGORY**

**April 2006**

**P02-Bedfordshire**



	Convictions		Unsuccessful	
	Number of Defendants	%	Number of Defendants	%
<b>A Homicide</b>	<b>2</b>	<b>100.0%</b>	<b>0</b>	<b>0.0%</b>
<b>B Offences Against The Person</b>	<b>73</b>	<b>60.3%</b>	<b>48</b>	<b>39.7%</b>
<b>C Sexual Offences</b>	<b>4</b>	<b>50.0%</b>	<b>4</b>	<b>50.0%</b>
<b>D Burglary</b>	<b>16</b>	<b>88.9%</b>	<b>2</b>	<b>11.1%</b>
<b>E Robbery</b>	<b>9</b>	<b>100.0%</b>	<b>0</b>	<b>0.0%</b>
<b>F Theft And Handling</b>	<b>111</b>	<b>85.4%</b>	<b>19</b>	<b>14.6%</b>
<b>G Fraud And Forgery</b>	<b>6</b>	<b>85.7%</b>	<b>1</b>	<b>14.3%</b>
<b>H Criminal Damage</b>	<b>28</b>	<b>80.0%</b>	<b>7</b>	<b>20.0%</b>
<b>I Drugs Offences</b>	<b>11</b>	<b>84.6%</b>	<b>2</b>	<b>15.4%</b>
<b>J Public Order Offences</b>	<b>26</b>	<b>78.8%</b>	<b>7</b>	<b>21.2%</b>
<b>K All Other Offences (excluding Motoring)</b>	<b>29</b>	<b>82.9%</b>	<b>6</b>	<b>17.1%</b>
<b>L Motoring Offences</b>	<b>315</b>	<b>87.3%</b>	<b>46</b>	<b>12.7%</b>
<b>Admin Finalisations</b>	<b>0</b>	<b>0.0%</b>	<b>11</b>	<b>100.0%</b>
<b>TOTAL</b>	<b>630</b>	<b>80.5%</b>	<b>153</b>	<b>19.5%</b>