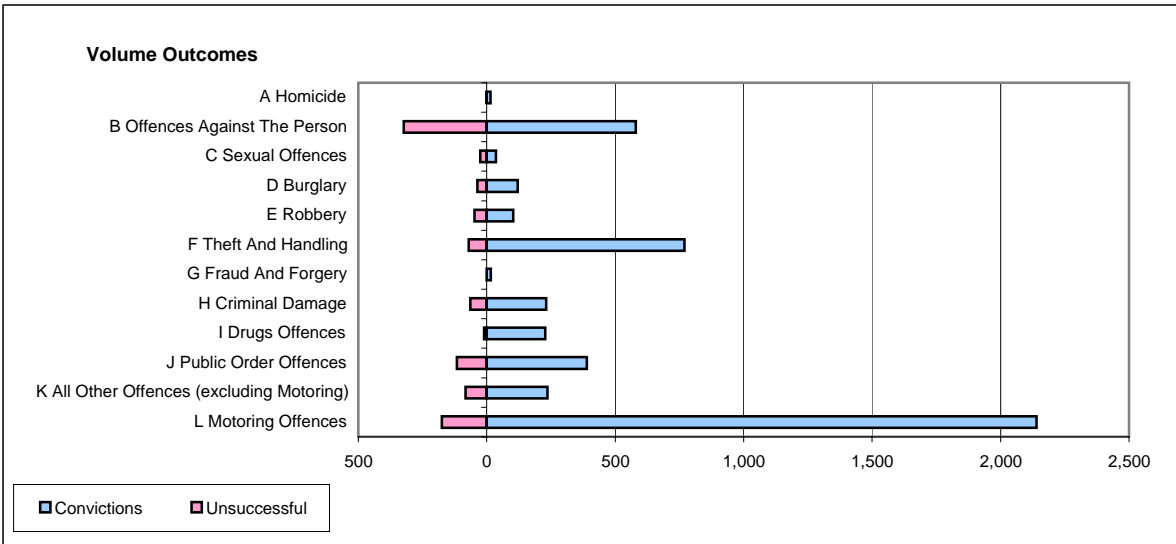
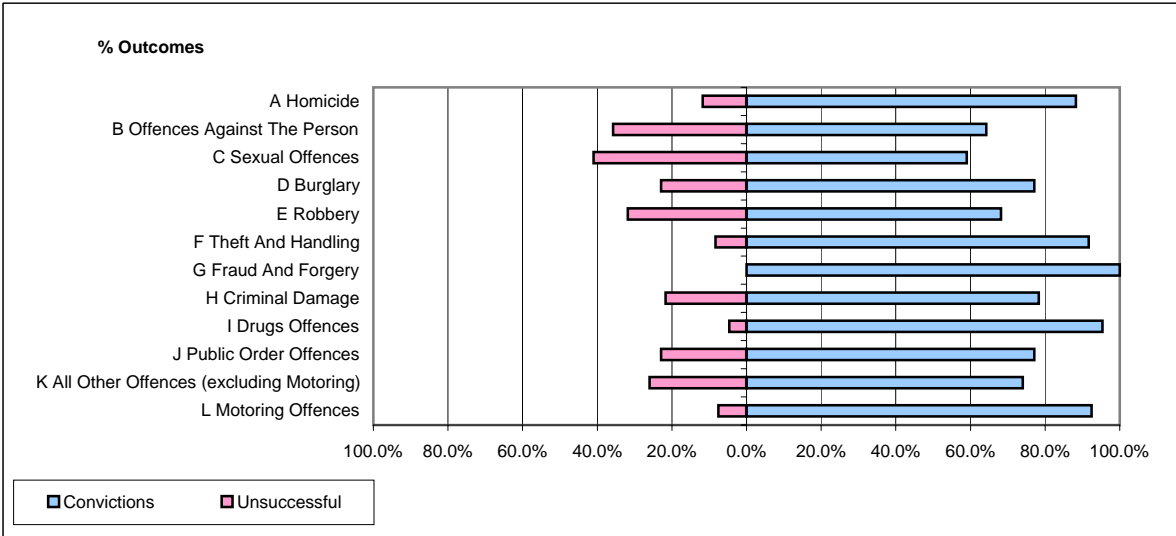


**CPS OUTCOMES BY PRINCIPAL OFFENCE CATEGORY**

**March 2006**

**P41-WestMidlands**



	Convictions		Unsuccessful	
	Number of Defendants	%	Number of Defendants	%
<b>A Homicide</b>	15	88.2%	2	11.8%
<b>B Offences Against The Person</b>	580	64.2%	323	35.8%
<b>C Sexual Offences</b>	36	59.0%	25	41.0%
<b>D Burglary</b>	121	77.1%	36	22.9%
<b>E Robbery</b>	103	68.2%	48	31.8%
<b>F Theft And Handling</b>	769	91.7%	70	8.3%
<b>G Fraud And Forgery</b>	16	100.0%	0	0.0%
<b>H Criminal Damage</b>	231	78.3%	64	21.7%
<b>I Drugs Offences</b>	228	95.4%	11	4.6%
<b>J Public Order Offences</b>	390	77.1%	116	22.9%
<b>K All Other Offences (excluding Motoring)</b>	236	74.0%	83	26.0%
<b>L Motoring Offences</b>	2,140	92.4%	175	7.6%
<b>Admin Finalisations</b>	0	0.0%	111	100.0%
<b>TOTAL</b>	<b>4,865</b>	<b>82.1%</b>	<b>1,064</b>	<b>17.9%</b>