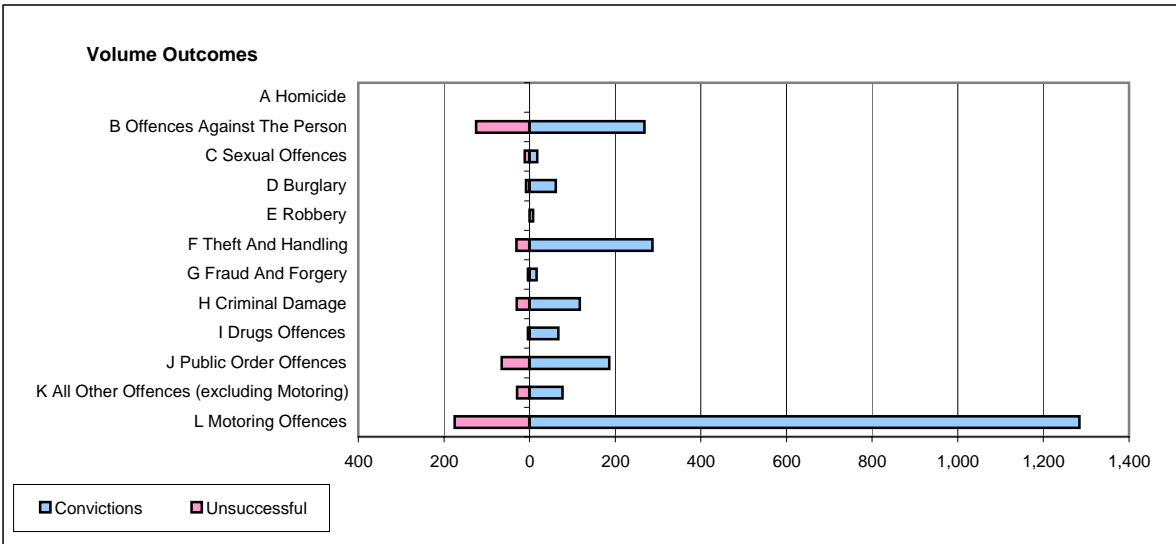
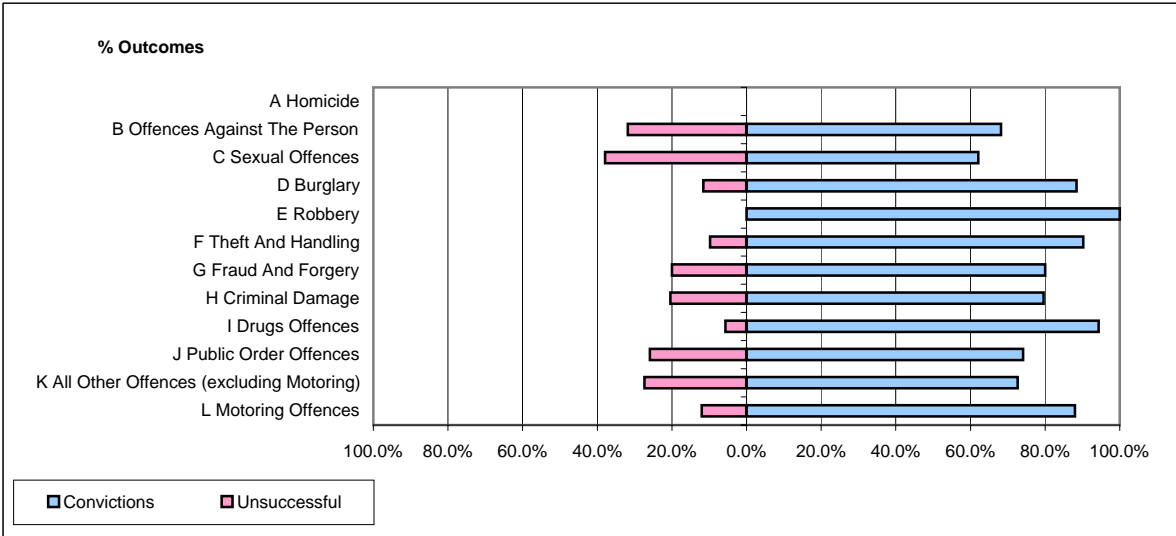


CPS OUTCOMES BY PRINCIPAL OFFENCE CATEGORY

March 2006

P40-WestMercia



	Convictions		Unsuccessful	
	Number of Defendants	%	Number of Defendants	%
A Homicide	0	#DIV/0!	0	#DIV/0!
B Offences Against The Person	268	68.2%	125	31.8%
C Sexual Offences	18	62.1%	11	37.9%
D Burglary	61	88.4%	8	11.6%
E Robbery	8	100.0%	0	0.0%
F Theft And Handling	287	90.3%	31	9.7%
G Fraud And Forgery	16	80.0%	4	20.0%
H Criminal Damage	117	79.6%	30	20.4%
I Drugs Offences	67	94.4%	4	5.6%
J Public Order Offences	186	74.1%	65	25.9%
K All Other Offences (excluding Motoring)	77	72.6%	29	27.4%
L Motoring Offences	1,284	88.0%	175	12.0%
Admin Finalisations	0	0.0%	49	100.0%
TOTAL	2,389	81.8%	531	18.2%