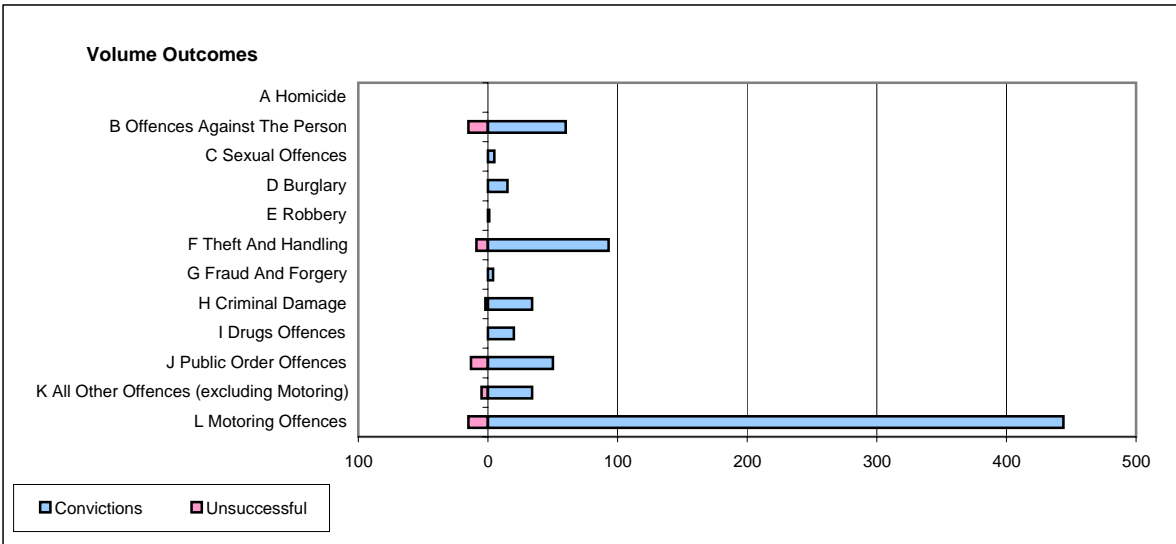
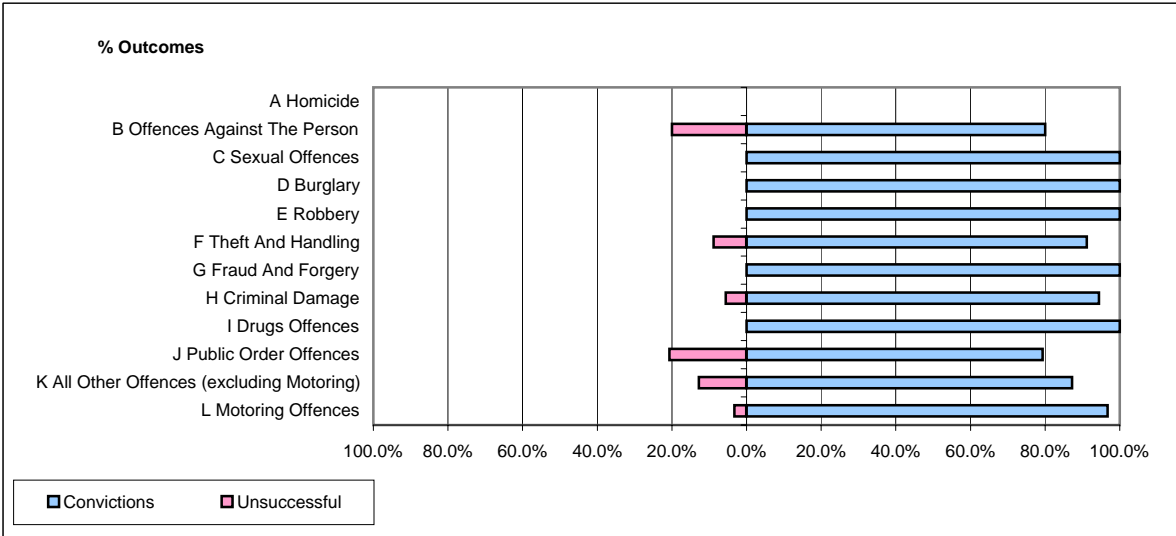


**CPS OUTCOMES BY PRINCIPAL OFFENCE CATEGORY**

**March 2006**

**P39-Warwickshire**



	Convictions		Unsuccessful	
	Number of Defendants	%	Number of Defendants	%
<b>A Homicide</b>	<b>0</b>	<b>#DIV/0!</b>	<b>0</b>	<b>#DIV/0!</b>
<b>B Offences Against The Person</b>	<b>60</b>	<b>80.0%</b>	<b>15</b>	<b>20.0%</b>
<b>C Sexual Offences</b>	<b>5</b>	<b>100.0%</b>	<b>0</b>	<b>0.0%</b>
<b>D Burglary</b>	<b>15</b>	<b>100.0%</b>	<b>0</b>	<b>0.0%</b>
<b>E Robbery</b>	<b>1</b>	<b>100.0%</b>	<b>0</b>	<b>0.0%</b>
<b>F Theft And Handling</b>	<b>93</b>	<b>91.2%</b>	<b>9</b>	<b>8.8%</b>
<b>G Fraud And Forgery</b>	<b>4</b>	<b>100.0%</b>	<b>0</b>	<b>0.0%</b>
<b>H Criminal Damage</b>	<b>34</b>	<b>94.4%</b>	<b>2</b>	<b>5.6%</b>
<b>I Drugs Offences</b>	<b>20</b>	<b>100.0%</b>	<b>0</b>	<b>0.0%</b>
<b>J Public Order Offences</b>	<b>50</b>	<b>79.4%</b>	<b>13</b>	<b>20.6%</b>
<b>K All Other Offences (excluding Motoring)</b>	<b>34</b>	<b>87.2%</b>	<b>5</b>	<b>12.8%</b>
<b>L Motoring Offences</b>	<b>444</b>	<b>96.7%</b>	<b>15</b>	<b>3.3%</b>
<b>Admin Finalisations</b>	<b>0</b>	<b>0.0%</b>	<b>6</b>	<b>100.0%</b>
<b>TOTAL</b>	<b>760</b>	<b>92.1%</b>	<b>65</b>	<b>7.9%</b>