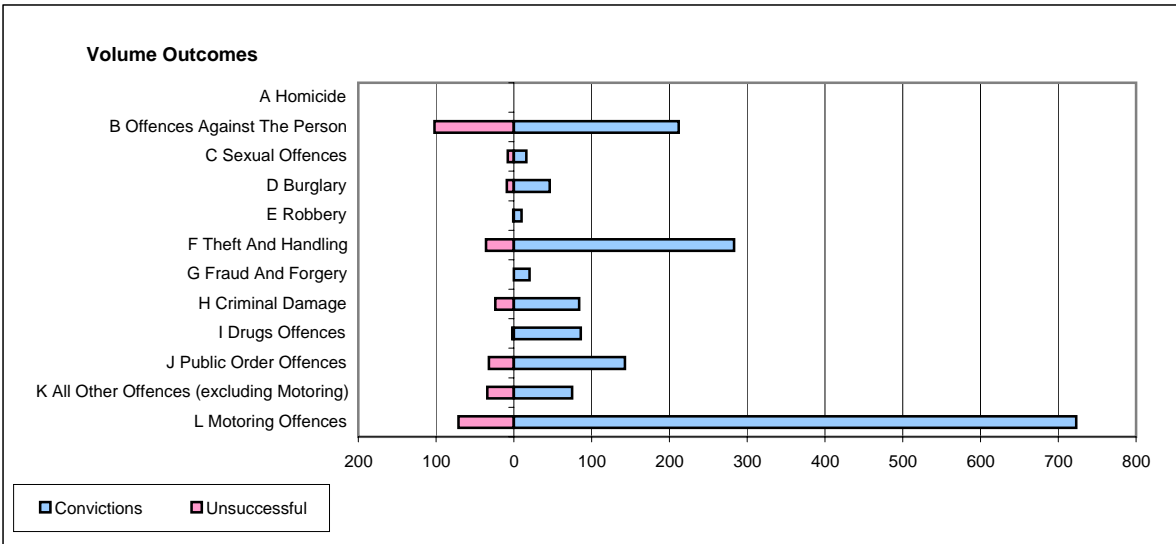
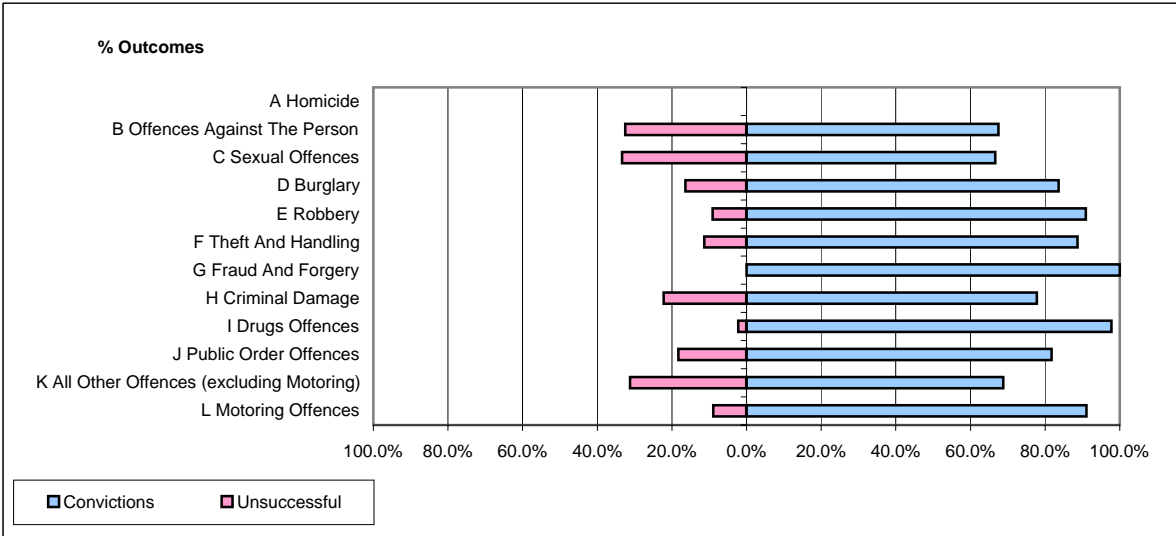


CPS OUTCOMES BY PRINCIPAL OFFENCE CATEGORY

March 2006

P37-Sussex



	Convictions		Unsuccessful	
	Number of Defendants	%	Number of Defendants	%
A Homicide	0	#DIV/0!	0	#DIV/0!
B Offences Against The Person	212	67.5%	102	32.5%
C Sexual Offences	16	66.7%	8	33.3%
D Burglary	46	83.6%	9	16.4%
E Robbery	10	90.9%	1	9.1%
F Theft And Handling	283	88.7%	36	11.3%
G Fraud And Forgery	20	100.0%	0	0.0%
H Criminal Damage	84	77.8%	24	22.2%
I Drugs Offences	86	97.7%	2	2.3%
J Public Order Offences	143	81.7%	32	18.3%
K All Other Offences (excluding Motoring)	75	68.8%	34	31.2%
L Motoring Offences	723	91.1%	71	8.9%
Admin Finalisations	0	0.0%	23	100.0%
TOTAL	1,698	83.2%	342	16.8%