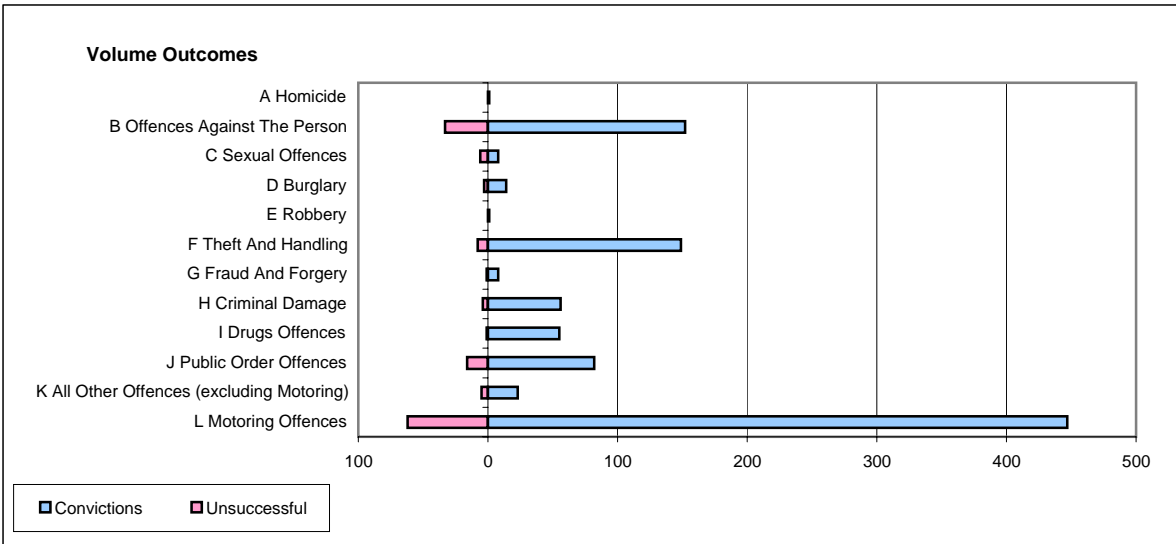
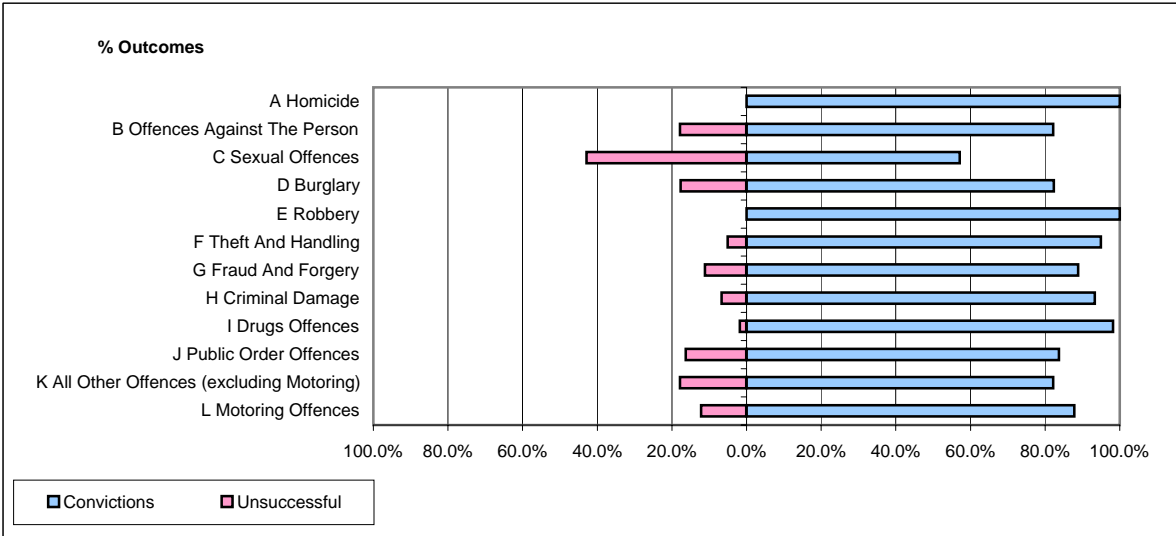


CPS OUTCOMES BY PRINCIPAL OFFENCE CATEGORY

March 2006

P35-Suffolk



	Convictions		Unsuccessful	
	Number of Defendants	%	Number of Defendants	%
A Homicide	1	100.0%	0	0.0%
B Offences Against The Person	152	82.2%	33	17.8%
C Sexual Offences	8	57.1%	6	42.9%
D Burglary	14	82.4%	3	17.6%
E Robbery	1	100.0%	0	0.0%
F Theft And Handling	149	94.9%	8	5.1%
G Fraud And Forgery	8	88.9%	1	11.1%
H Criminal Damage	56	93.3%	4	6.7%
I Drugs Offences	55	98.2%	1	1.8%
J Public Order Offences	82	83.7%	16	16.3%
K All Other Offences (excluding Motoring)	23	82.1%	5	17.9%
L Motoring Offences	447	87.8%	62	12.2%
Admin Finalisations	0	0.0%	37	100.0%
TOTAL	996	85.0%	176	15.0%