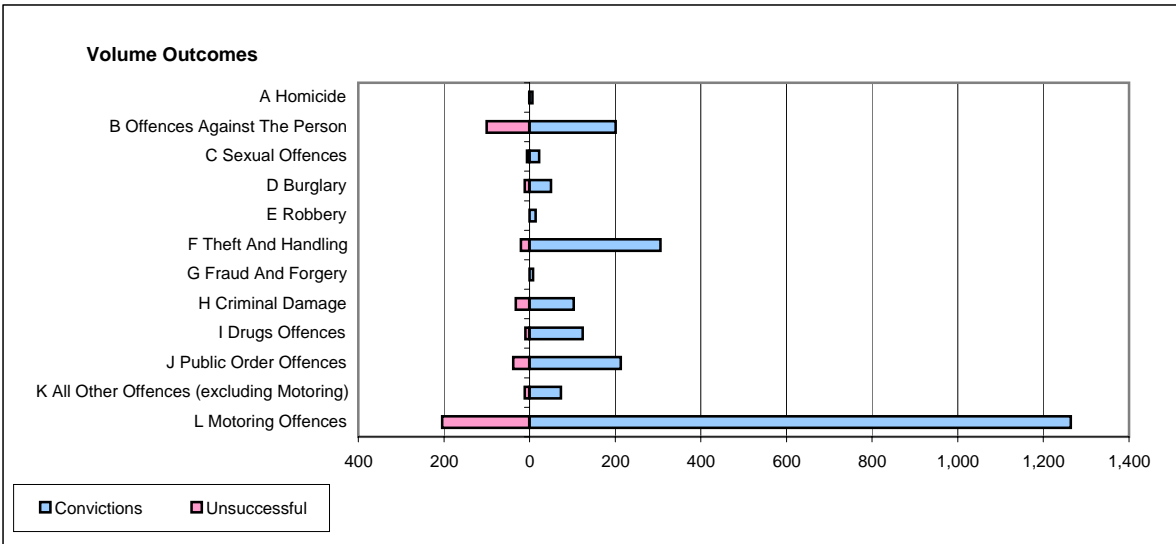
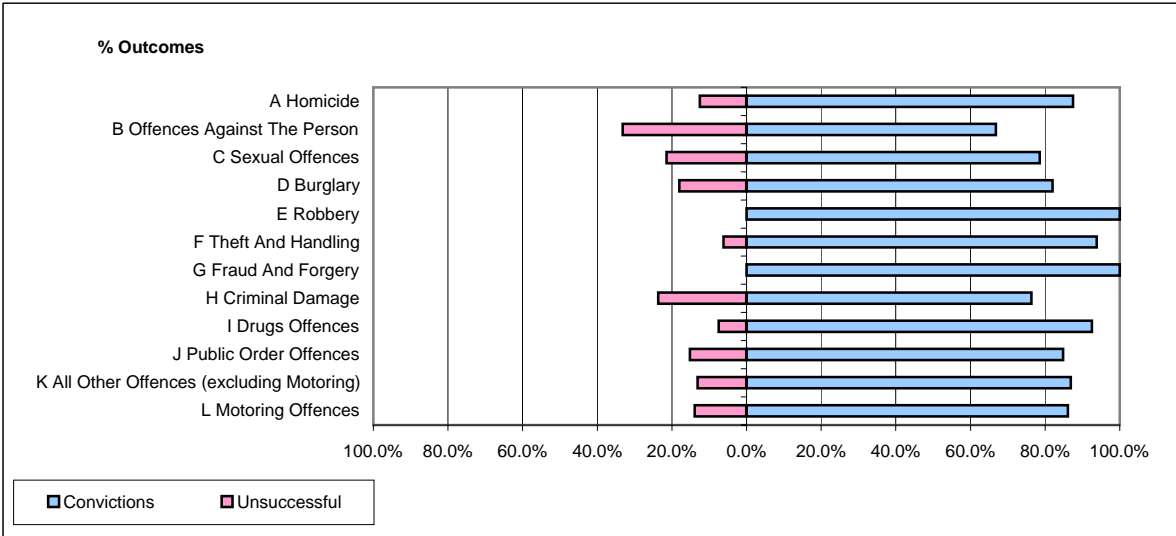


CPS OUTCOMES BY PRINCIPAL OFFENCE CATEGORY

March 2006

P32-SouthWales



	Convictions		Unsuccessful	
	Number of Defendants	%	Number of Defendants	%
A Homicide	7	87.5%	1	12.5%
B Offences Against The Person	201	66.8%	100	33.2%
C Sexual Offences	22	78.6%	6	21.4%
D Burglary	50	82.0%	11	18.0%
E Robbery	14	100.0%	0	0.0%
F Theft And Handling	306	93.9%	20	6.1%
G Fraud And Forgery	8	100.0%	0	0.0%
H Criminal Damage	103	76.3%	32	23.7%
I Drugs Offences	124	92.5%	10	7.5%
J Public Order Offences	213	84.9%	38	15.1%
K All Other Offences (excluding Motoring)	73	86.9%	11	13.1%
L Motoring Offences	1,264	86.1%	204	13.9%
Admin Finalisations	0	0.0%	60	100.0%
TOTAL	2,385	82.9%	493	17.1%