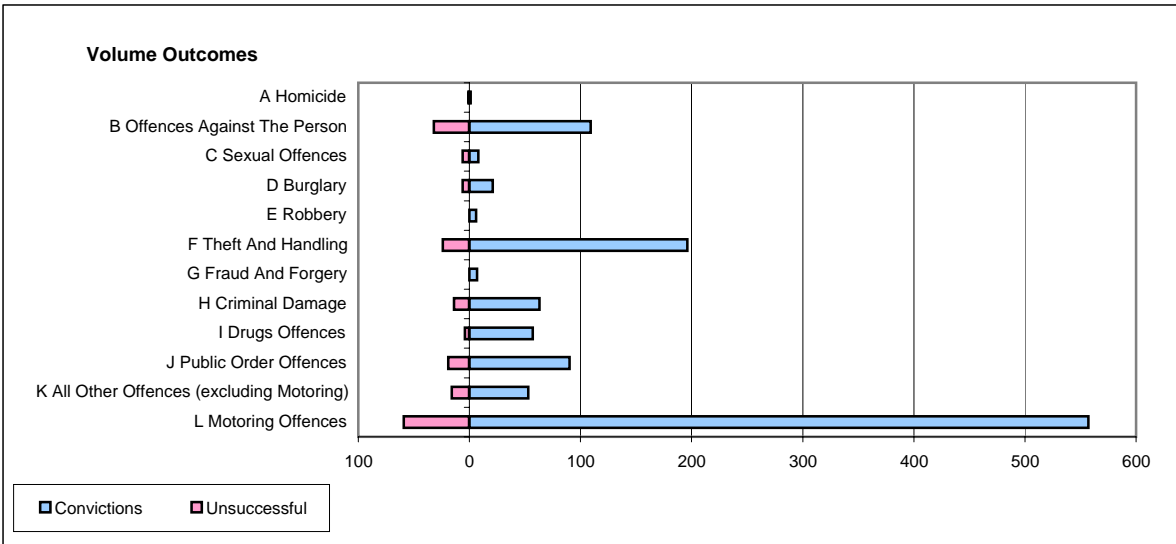
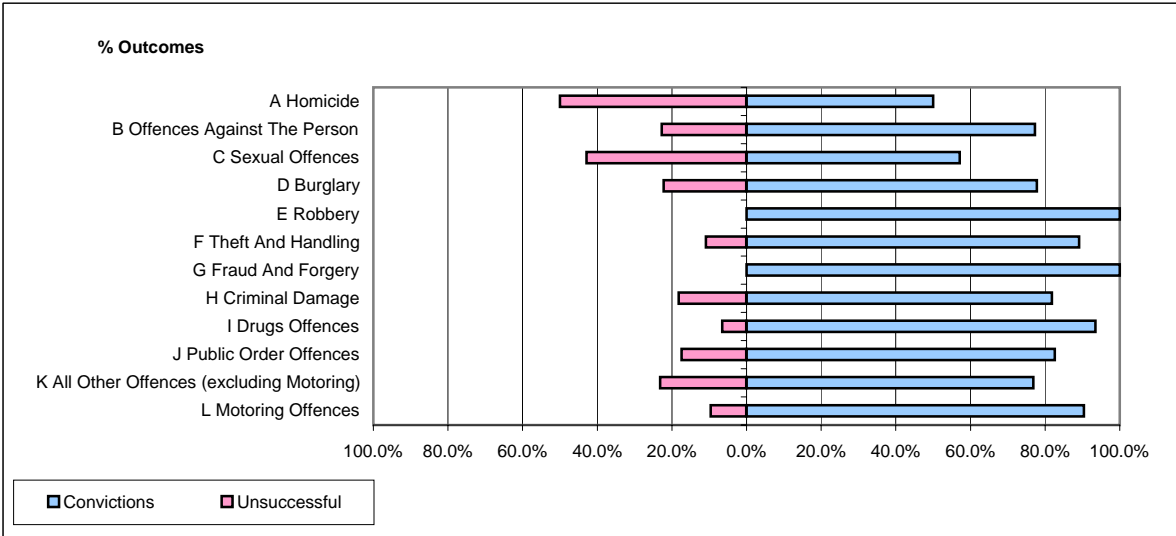


CPS OUTCOMES BY PRINCIPAL OFFENCE CATEGORY

March 2006

P26-Norfolk



	Convictions		Unsuccessful	
	Number of Defendants	%	Number of Defendants	%
A Homicide	1	50.0%	1	50.0%
B Offences Against The Person	109	77.3%	32	22.7%
C Sexual Offences	8	57.1%	6	42.9%
D Burglary	21	77.8%	6	22.2%
E Robbery	6	100.0%	0	0.0%
F Theft And Handling	196	89.1%	24	10.9%
G Fraud And Forgery	7	100.0%	0	0.0%
H Criminal Damage	63	81.8%	14	18.2%
I Drugs Offences	57	93.4%	4	6.6%
J Public Order Offences	90	82.6%	19	17.4%
K All Other Offences (excluding Motoring)	53	76.8%	16	23.2%
L Motoring Offences	557	90.4%	59	9.6%
Admin Finalisations	0	0.0%	28	100.0%
TOTAL	1,168	84.8%	209	15.2%