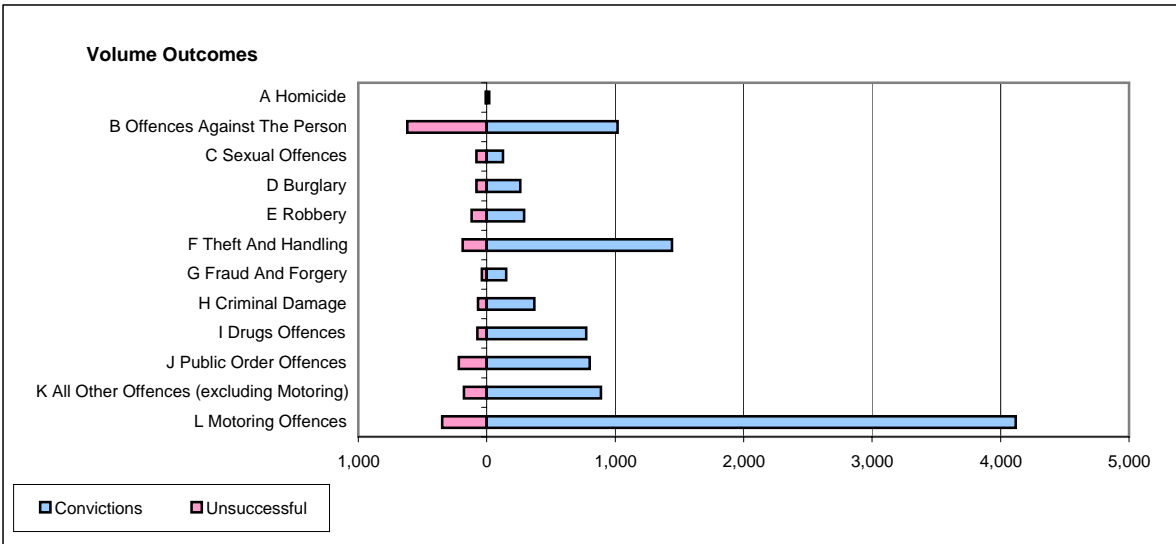
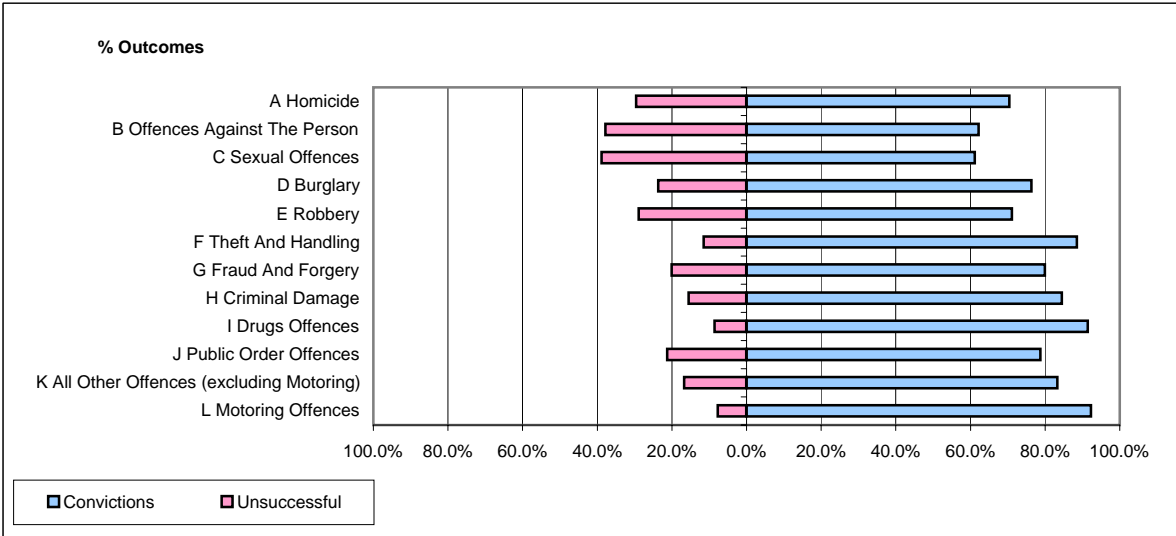


CPS OUTCOMES BY PRINCIPAL OFFENCE CATEGORY

March 2006

P25-Metropolitan&City



	Convictions		Unsuccessful	
	Number of Defendants	%	Number of Defendants	%
A Homicide	19	70.4%	8	29.6%
B Offences Against The Person	1,019	62.2%	619	37.8%
C Sexual Offences	126	61.2%	80	38.8%
D Burglary	261	76.3%	81	23.7%
E Robbery	290	71.1%	118	28.9%
F Theft And Handling	1,441	88.5%	187	11.5%
G Fraud And Forgery	151	79.9%	38	20.1%
H Criminal Damage	371	84.5%	68	15.5%
I Drugs Offences	774	91.4%	73	8.6%
J Public Order Offences	802	78.7%	217	21.3%
K All Other Offences (excluding Motoring)	889	83.3%	178	16.7%
L Motoring Offences	4,119	92.3%	346	7.7%
Admin Finalisations	0	0.0%	603	100.0%
TOTAL	10,262	79.7%	2,616	20.3%