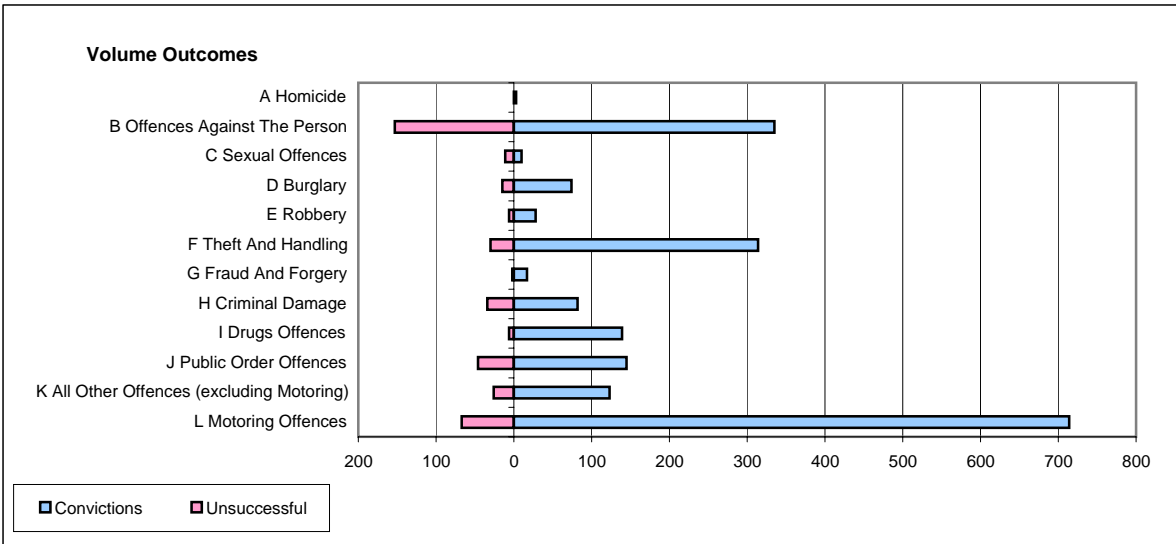
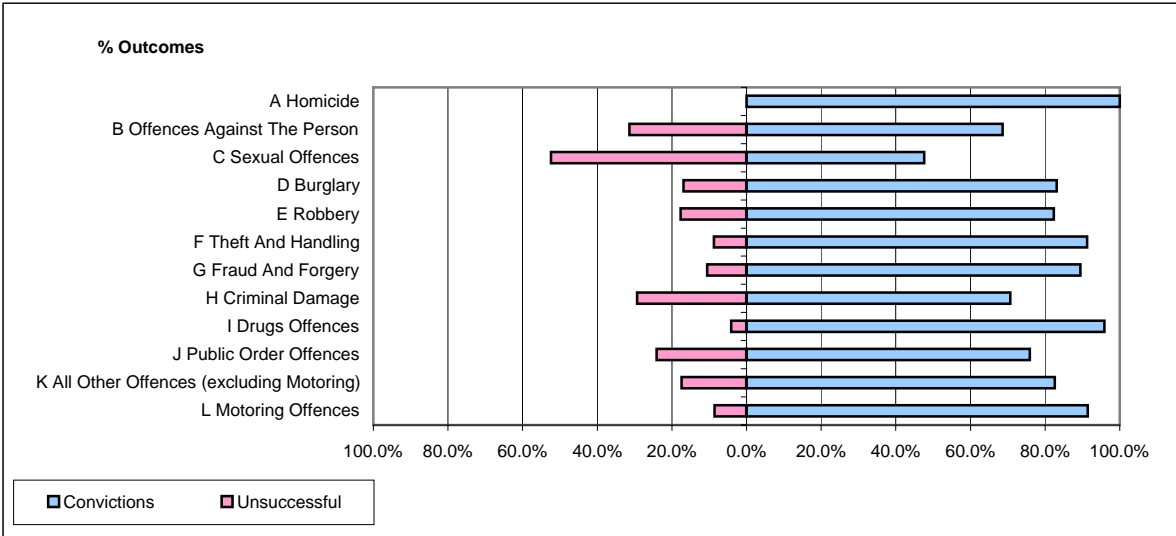


CPS OUTCOMES BY PRINCIPAL OFFENCE CATEGORY

March 2006

P24-Merseyside



	Convictions		Unsuccessful	
	Number of Defendants	%	Number of Defendants	%
A Homicide	3	100.0%	0	0.0%
B Offences Against The Person	335	68.6%	153	31.4%
C Sexual Offences	10	47.6%	11	52.4%
D Burglary	74	83.1%	15	16.9%
E Robbery	28	82.4%	6	17.6%
F Theft And Handling	314	91.3%	30	8.7%
G Fraud And Forgery	17	89.5%	2	10.5%
H Criminal Damage	82	70.7%	34	29.3%
I Drugs Offences	139	95.9%	6	4.1%
J Public Order Offences	145	75.9%	46	24.1%
K All Other Offences (excluding Motoring)	123	82.6%	26	17.4%
L Motoring Offences	714	91.4%	67	8.6%
Admin Finalisations	0	0.0%	58	100.0%
TOTAL	1,984	81.4%	454	18.6%