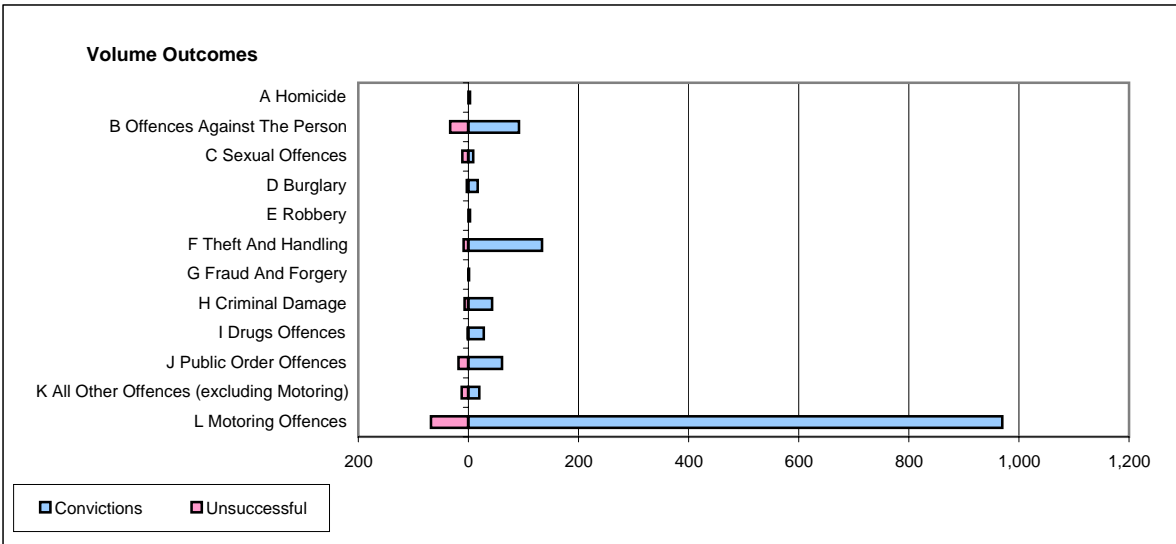
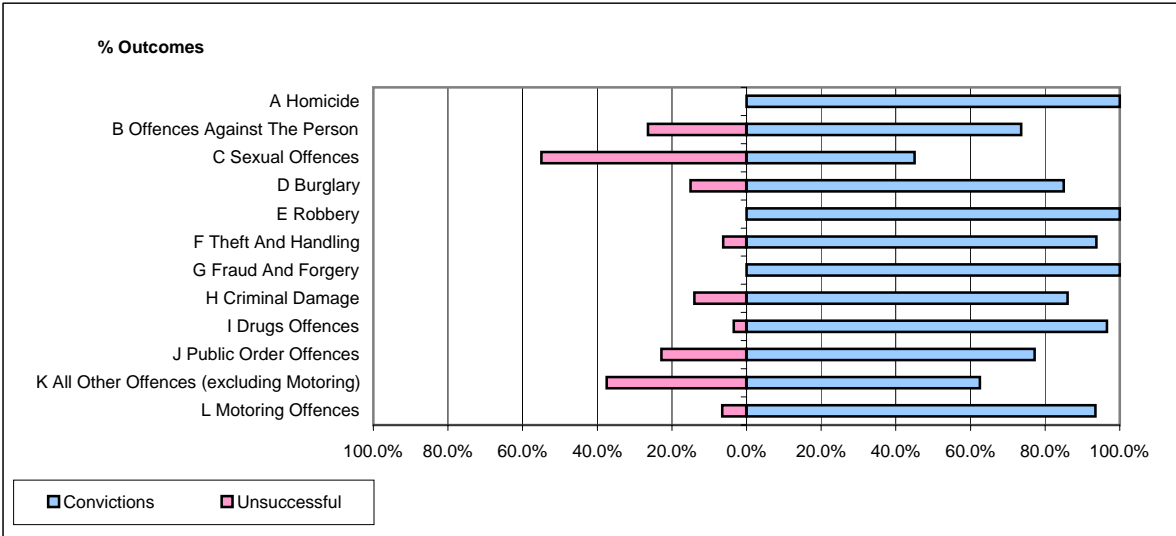


CPS OUTCOMES BY PRINCIPAL OFFENCE CATEGORY

March 2006

P23-Lincolnshire



	Convictions		Unsuccessful	
	Number of Defendants	%	Number of Defendants	%
A Homicide	3	100.0%	0	0.0%
B Offences Against The Person	92	73.6%	33	26.4%
C Sexual Offences	9	45.0%	11	55.0%
D Burglary	17	85.0%	3	15.0%
E Robbery	3	100.0%	0	0.0%
F Theft And Handling	134	93.7%	9	6.3%
G Fraud And Forgery	1	100.0%	0	0.0%
H Criminal Damage	43	86.0%	7	14.0%
I Drugs Offences	28	96.6%	1	3.4%
J Public Order Offences	61	77.2%	18	22.8%
K All Other Offences (excluding Motoring)	20	62.5%	12	37.5%
L Motoring Offences	970	93.4%	68	6.6%
Admin Finalisations	0	0.0%	8	100.0%
TOTAL	1,381	89.0%	170	11.0%