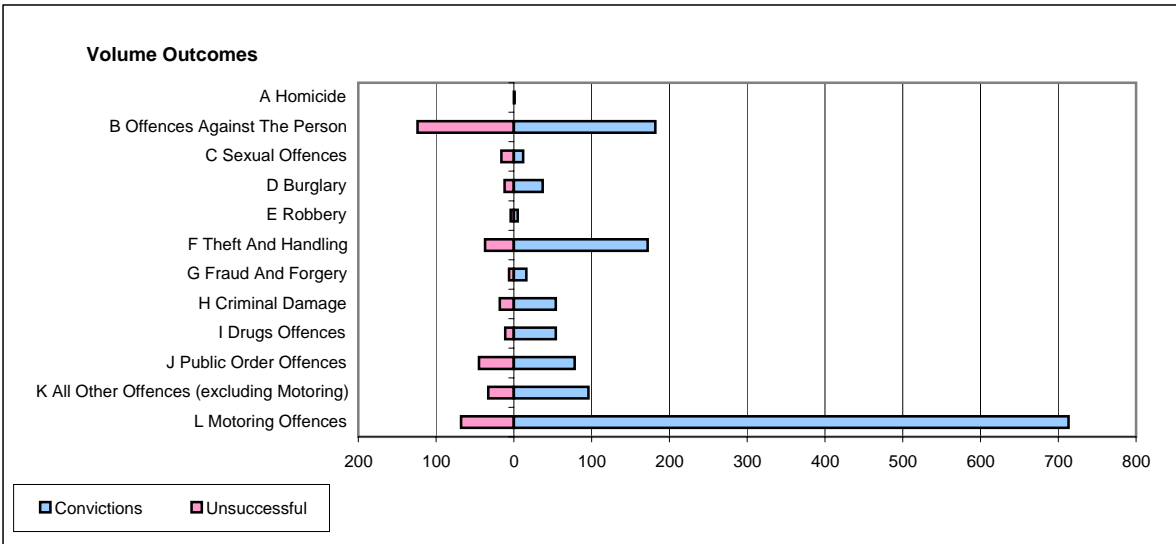
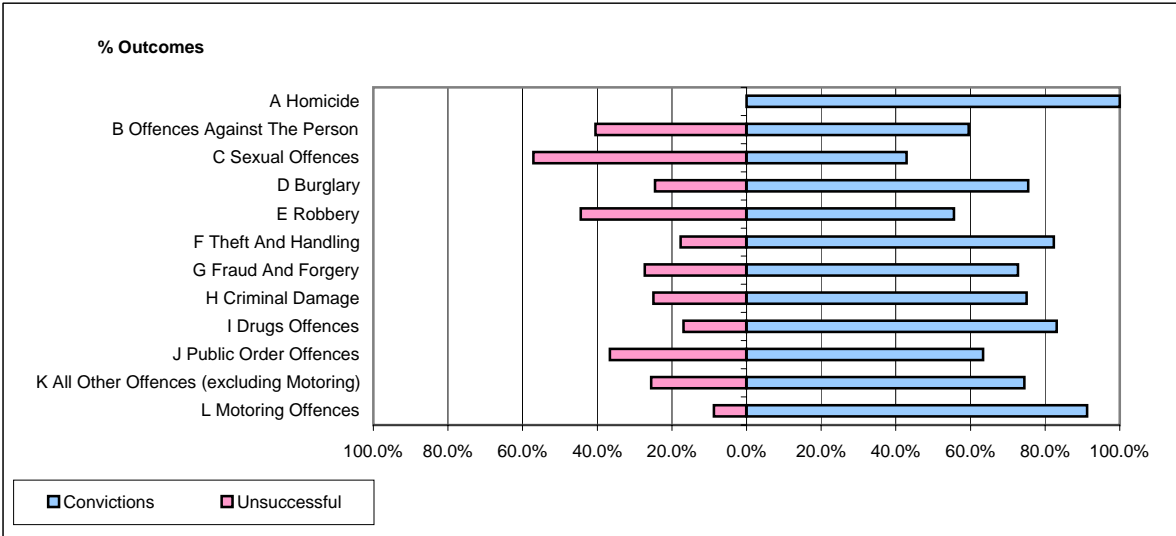


**CPS OUTCOMES BY PRINCIPAL OFFENCE CATEGORY**

**March 2006**

**P22-Leicestershire**



	Convictions		Unsuccessful	
	Number of Defendants	%	Number of Defendants	%
<b>A Homicide</b>	<b>1</b>	<b>100.0%</b>	<b>0</b>	<b>0.0%</b>
<b>B Offences Against The Person</b>	<b>182</b>	<b>59.5%</b>	<b>124</b>	<b>40.5%</b>
<b>C Sexual Offences</b>	<b>12</b>	<b>42.9%</b>	<b>16</b>	<b>57.1%</b>
<b>D Burglary</b>	<b>37</b>	<b>75.5%</b>	<b>12</b>	<b>24.5%</b>
<b>E Robbery</b>	<b>5</b>	<b>55.6%</b>	<b>4</b>	<b>44.4%</b>
<b>F Theft And Handling</b>	<b>172</b>	<b>82.3%</b>	<b>37</b>	<b>17.7%</b>
<b>G Fraud And Forgery</b>	<b>16</b>	<b>72.7%</b>	<b>6</b>	<b>27.3%</b>
<b>H Criminal Damage</b>	<b>54</b>	<b>75.0%</b>	<b>18</b>	<b>25.0%</b>
<b>I Drugs Offences</b>	<b>54</b>	<b>83.1%</b>	<b>11</b>	<b>16.9%</b>
<b>J Public Order Offences</b>	<b>78</b>	<b>63.4%</b>	<b>45</b>	<b>36.6%</b>
<b>K All Other Offences (excluding Motoring)</b>	<b>96</b>	<b>74.4%</b>	<b>33</b>	<b>25.6%</b>
<b>L Motoring Offences</b>	<b>713</b>	<b>91.3%</b>	<b>68</b>	<b>8.7%</b>
<b>Admin Finalisations</b>	<b>0</b>	<b>0.0%</b>	<b>36</b>	<b>100.0%</b>
<b>TOTAL</b>	<b>1,420</b>	<b>77.6%</b>	<b>410</b>	<b>22.4%</b>