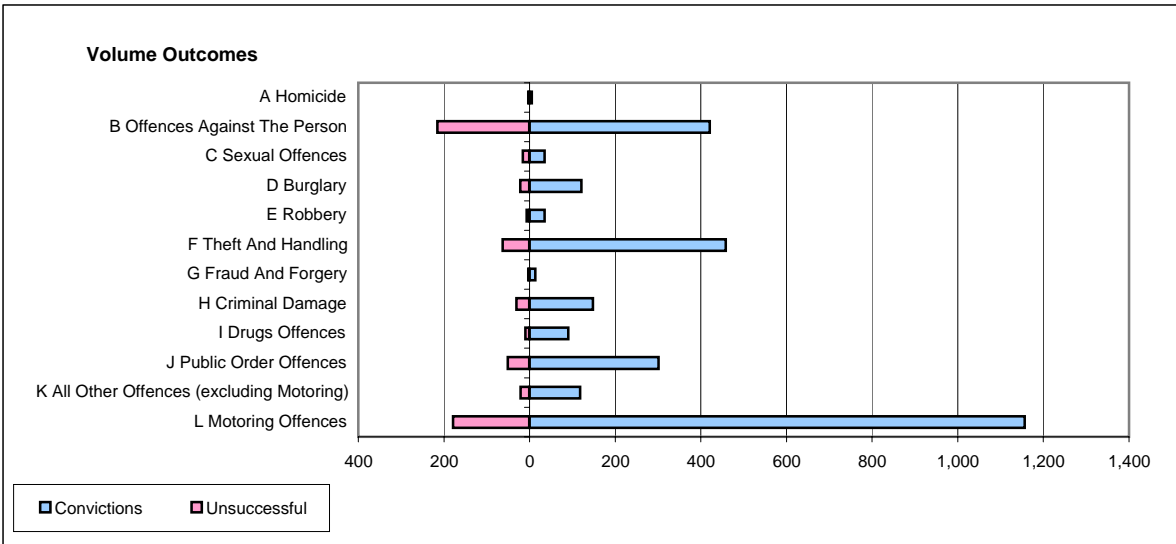
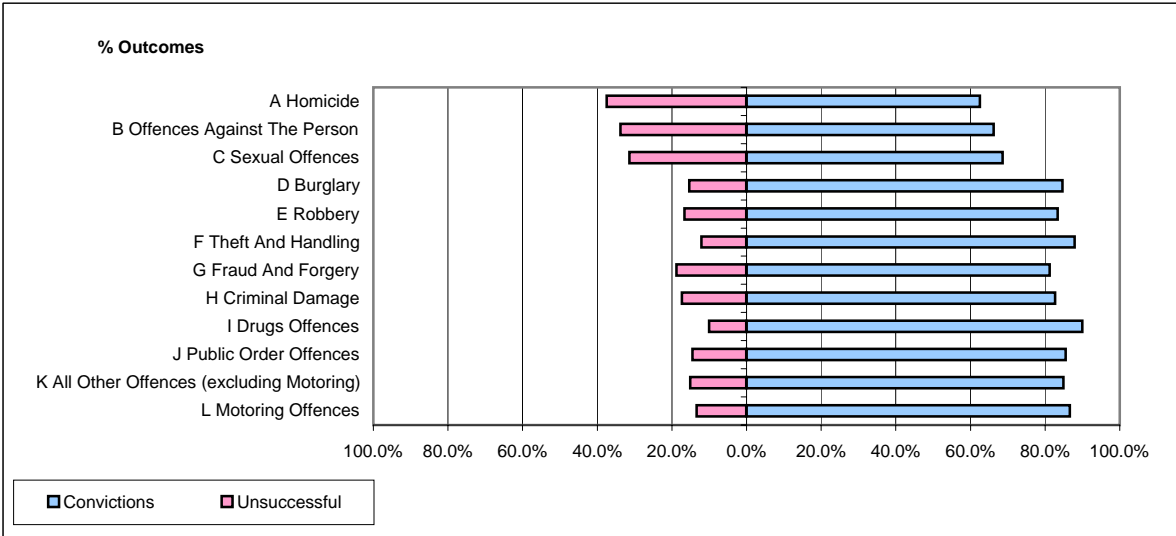


**CPS OUTCOMES BY PRINCIPAL OFFENCE CATEGORY**

**March 2006**

**P21-Lancashire**



	Convictions		Unsuccessful	
	Number of Defendants	%	Number of Defendants	%
<b>A Homicide</b>	<b>5</b>	<b>62.5%</b>	<b>3</b>	<b>37.5%</b>
<b>B Offences Against The Person</b>	<b>421</b>	<b>66.2%</b>	<b>215</b>	<b>33.8%</b>
<b>C Sexual Offences</b>	<b>35</b>	<b>68.6%</b>	<b>16</b>	<b>31.4%</b>
<b>D Burglary</b>	<b>121</b>	<b>84.6%</b>	<b>22</b>	<b>15.4%</b>
<b>E Robbery</b>	<b>35</b>	<b>83.3%</b>	<b>7</b>	<b>16.7%</b>
<b>F Theft And Handling</b>	<b>458</b>	<b>87.9%</b>	<b>63</b>	<b>12.1%</b>
<b>G Fraud And Forgery</b>	<b>13</b>	<b>81.3%</b>	<b>3</b>	<b>18.8%</b>
<b>H Criminal Damage</b>	<b>148</b>	<b>82.7%</b>	<b>31</b>	<b>17.3%</b>
<b>I Drugs Offences</b>	<b>90</b>	<b>90.0%</b>	<b>10</b>	<b>10.0%</b>
<b>J Public Order Offences</b>	<b>301</b>	<b>85.5%</b>	<b>51</b>	<b>14.5%</b>
<b>K All Other Offences (excluding Motoring)</b>	<b>118</b>	<b>84.9%</b>	<b>21</b>	<b>15.1%</b>
<b>L Motoring Offences</b>	<b>1,156</b>	<b>86.6%</b>	<b>179</b>	<b>13.4%</b>
<b>Admin Finalisations</b>	<b>0</b>	<b>0.0%</b>	<b>76</b>	<b>100.0%</b>
<b>TOTAL</b>	<b>2,901</b>	<b>80.6%</b>	<b>697</b>	<b>19.4%</b>