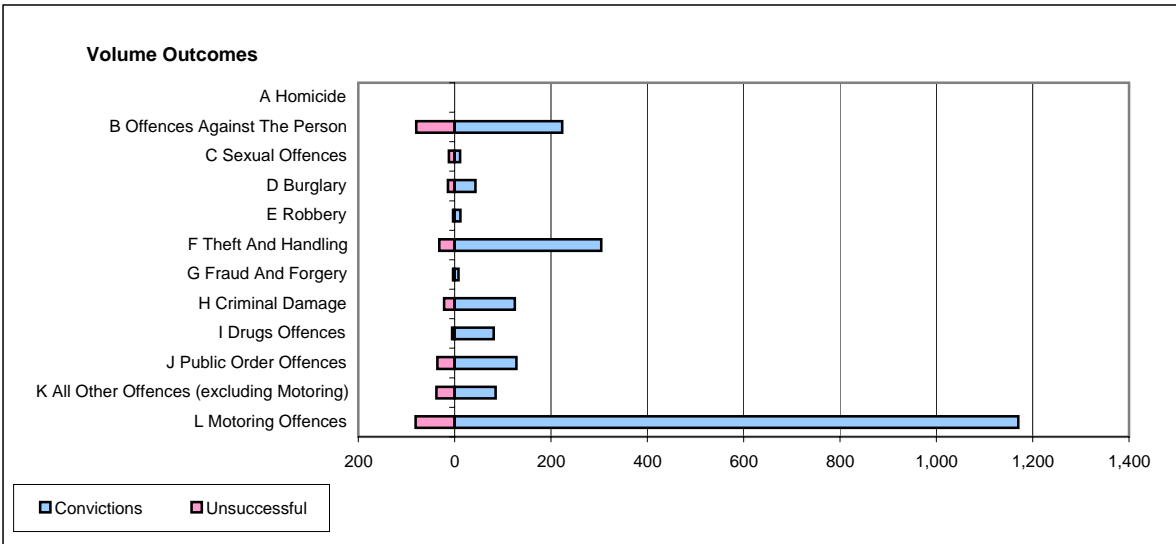
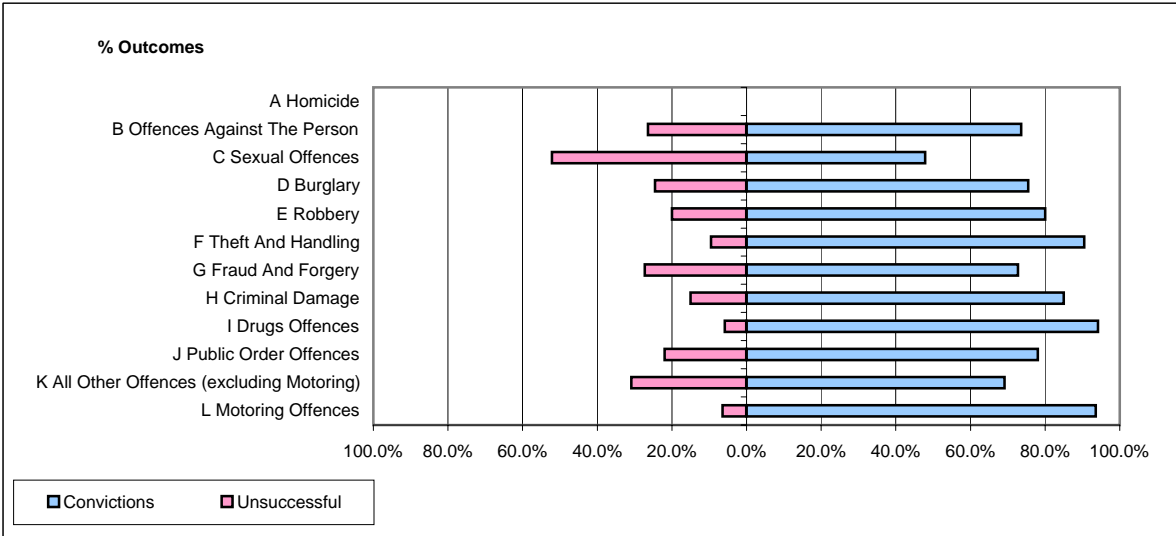


CPS OUTCOMES BY PRINCIPAL OFFENCE CATEGORY

March 2006

P20-Kent



	Convictions		Unsuccessful	
	Number of Defendants	%	Number of Defendants	%
A Homicide	0	#DIV/0!	0	#DIV/0!
B Offences Against The Person	223	73.6%	80	26.4%
C Sexual Offences	11	47.8%	12	52.2%
D Burglary	43	75.4%	14	24.6%
E Robbery	12	80.0%	3	20.0%
F Theft And Handling	304	90.5%	32	9.5%
G Fraud And Forgery	8	72.7%	3	27.3%
H Criminal Damage	125	85.0%	22	15.0%
I Drugs Offences	81	94.2%	5	5.8%
J Public Order Offences	128	78.0%	36	22.0%
K All Other Offences (excluding Motoring)	85	69.1%	38	30.9%
L Motoring Offences	1,170	93.5%	81	6.5%
Admin Finalisations	0	0.0%	25	100.0%
TOTAL	2,190	86.2%	351	13.8%