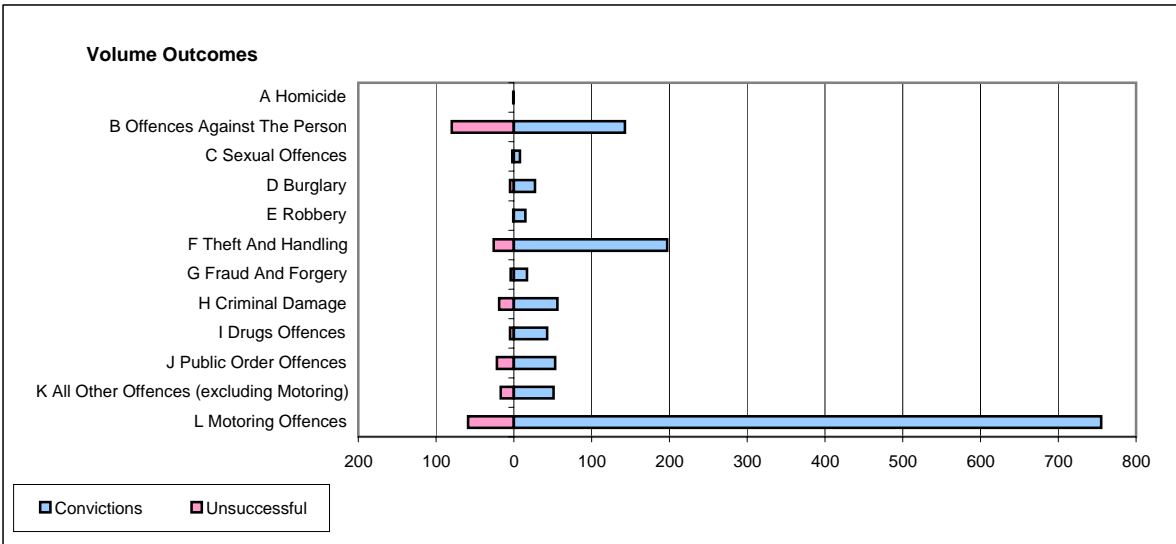
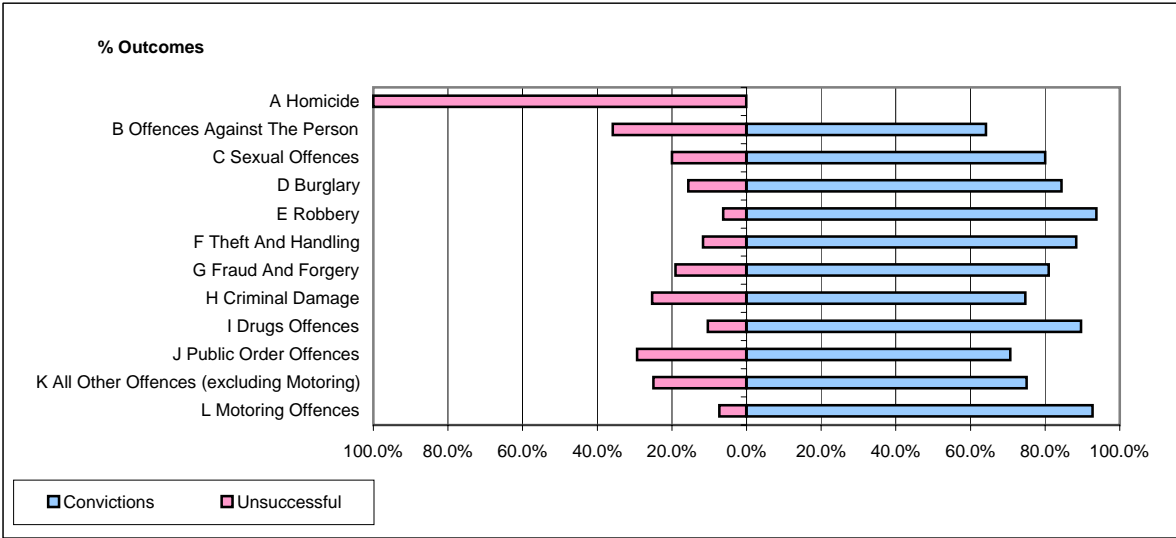


CPS OUTCOMES BY PRINCIPAL OFFENCE CATEGORY

March 2006

P18-Hertfordshire



	Convictions		Unsuccessful	
	Number of Defendants	%	Number of Defendants	%
A Homicide	0	0.0%	1	100.0%
B Offences Against The Person	143	64.1%	80	35.9%
C Sexual Offences	8	80.0%	2	20.0%
D Burglary	27	84.4%	5	15.6%
E Robbery	15	93.8%	1	6.3%
F Theft And Handling	197	88.3%	26	11.7%
G Fraud And Forgery	17	81.0%	4	19.0%
H Criminal Damage	56	74.7%	19	25.3%
I Drugs Offences	43	89.6%	5	10.4%
J Public Order Offences	53	70.7%	22	29.3%
K All Other Offences (excluding Motoring)	51	75.0%	17	25.0%
L Motoring Offences	755	92.8%	59	7.2%
Admin Finalisations	0	0.0%	26	100.0%
TOTAL	1,365	83.6%	267	16.4%