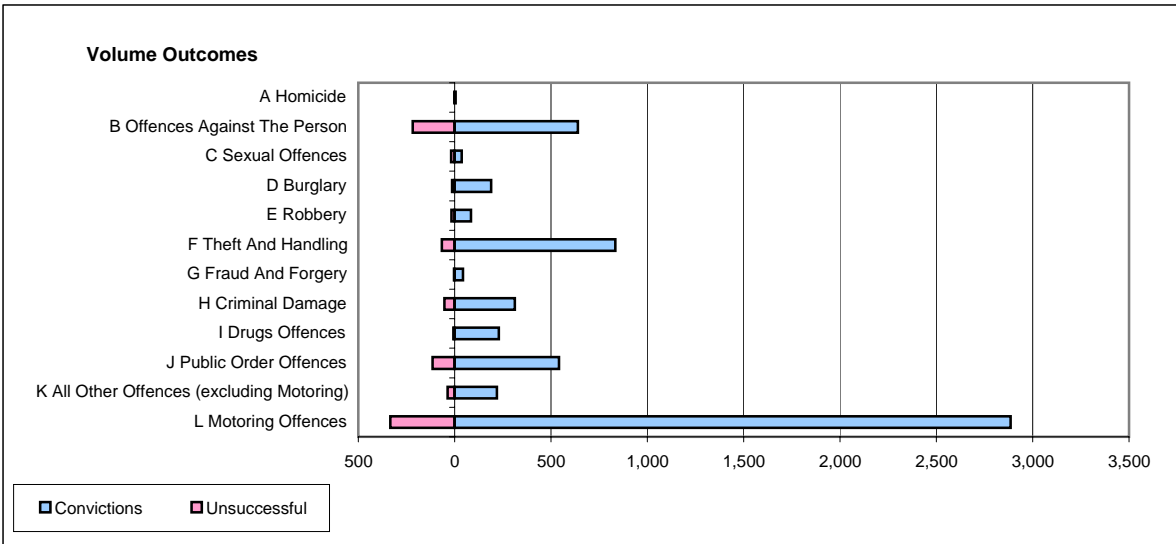
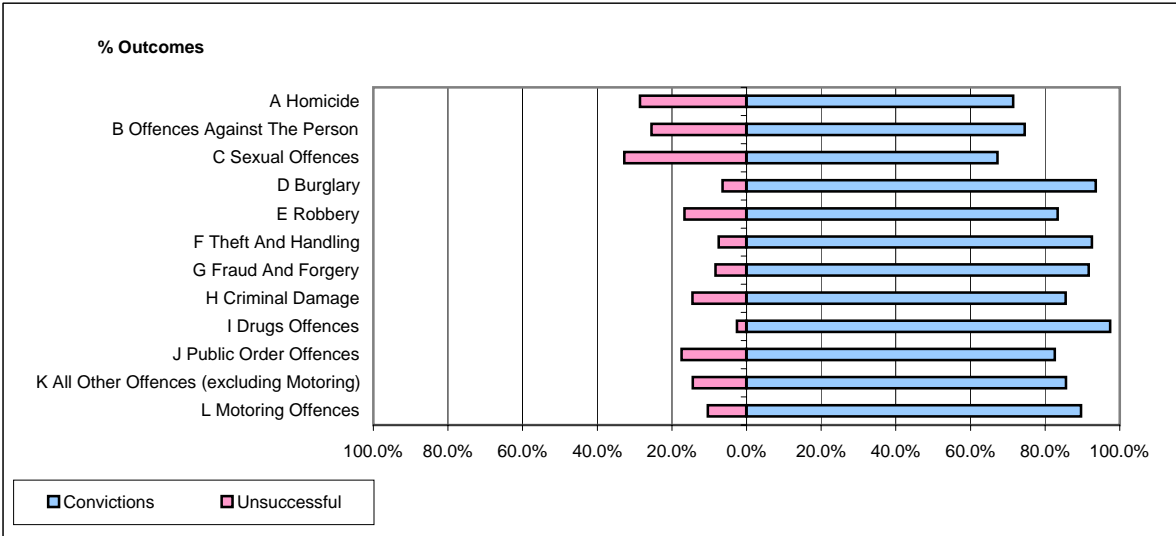


CPS OUTCOMES BY PRINCIPAL OFFENCE CATEGORY

March 2006

P15-GreaterManchester



	Convictions		Unsuccessful	
	Number of Defendants	%	Number of Defendants	%
A Homicide	5	71.4%	2	28.6%
B Offences Against The Person	639	74.6%	218	25.4%
C Sexual Offences	37	67.3%	18	32.7%
D Burglary	190	93.6%	13	6.4%
E Robbery	85	83.3%	17	16.7%
F Theft And Handling	834	92.6%	67	7.4%
G Fraud And Forgery	44	91.7%	4	8.3%
H Criminal Damage	312	85.5%	53	14.5%
I Drugs Offences	230	97.5%	6	2.5%
J Public Order Offences	541	82.6%	114	17.4%
K All Other Offences (excluding Motoring)	220	85.6%	37	14.4%
L Motoring Offences	2,886	89.6%	334	10.4%
Admin Finalisations	0	0.0%	224	100.0%
TOTAL	6,023	84.5%	1,107	15.5%