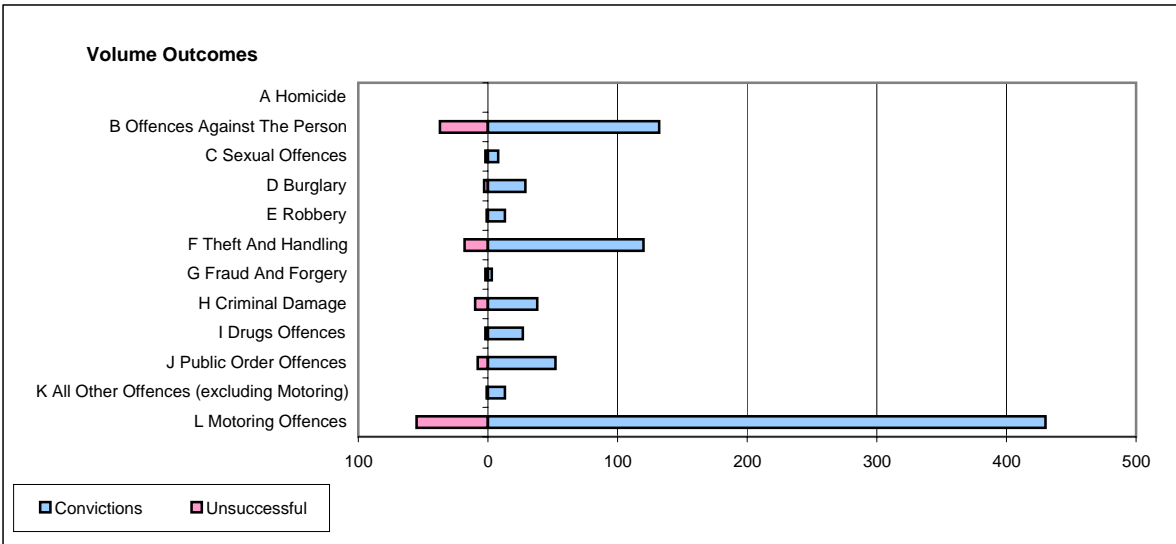
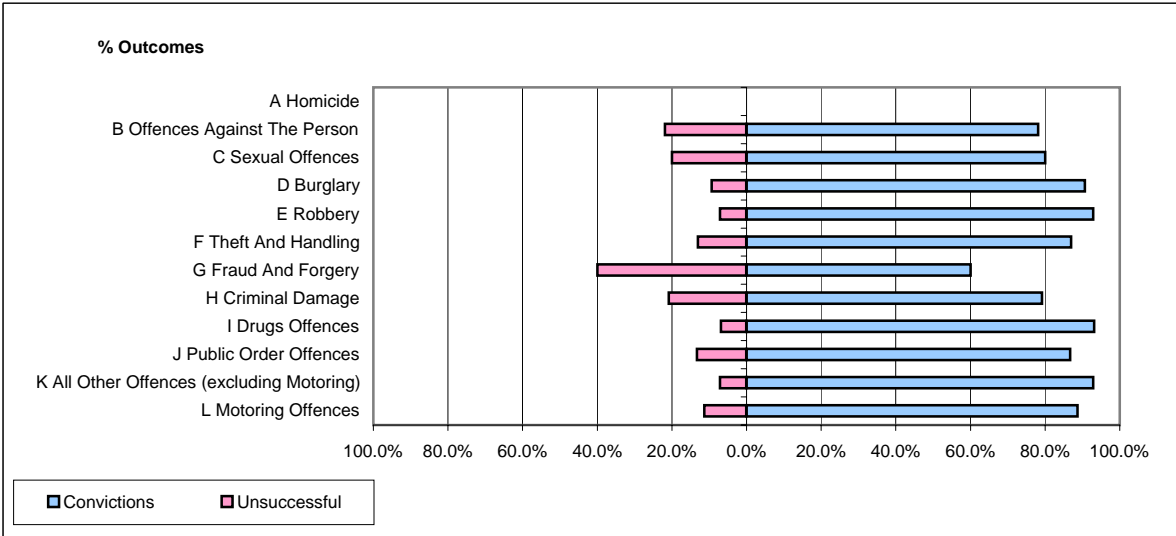


CPS OUTCOMES BY PRINCIPAL OFFENCE CATEGORY

March 2006

P14-Gloucestershire



	Convictions		Unsuccessful	
	Number of Defendants	%	Number of Defendants	%
A Homicide	0	#DIV/0!	0	#DIV/0!
B Offences Against The Person	132	78.1%	37	21.9%
C Sexual Offences	8	80.0%	2	20.0%
D Burglary	29	90.6%	3	9.4%
E Robbery	13	92.9%	1	7.1%
F Theft And Handling	120	87.0%	18	13.0%
G Fraud And Forgery	3	60.0%	2	40.0%
H Criminal Damage	38	79.2%	10	20.8%
I Drugs Offences	27	93.1%	2	6.9%
J Public Order Offences	52	86.7%	8	13.3%
K All Other Offences (excluding Motoring)	13	92.9%	1	7.1%
L Motoring Offences	430	88.7%	55	11.3%
Admin Finalisations	0	0.0%	8	100.0%
TOTAL	865	85.5%	147	14.5%