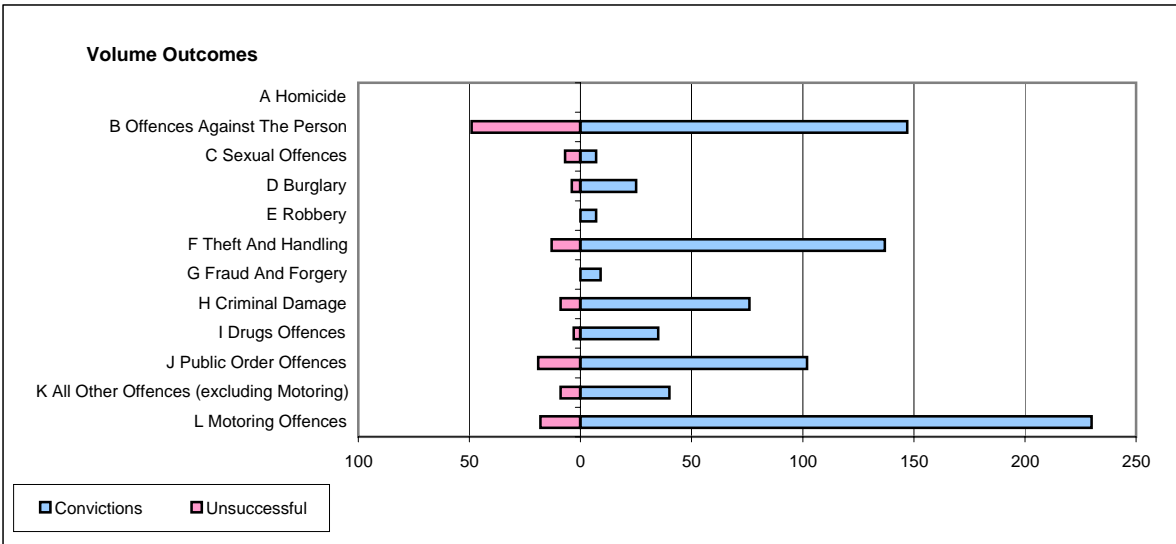
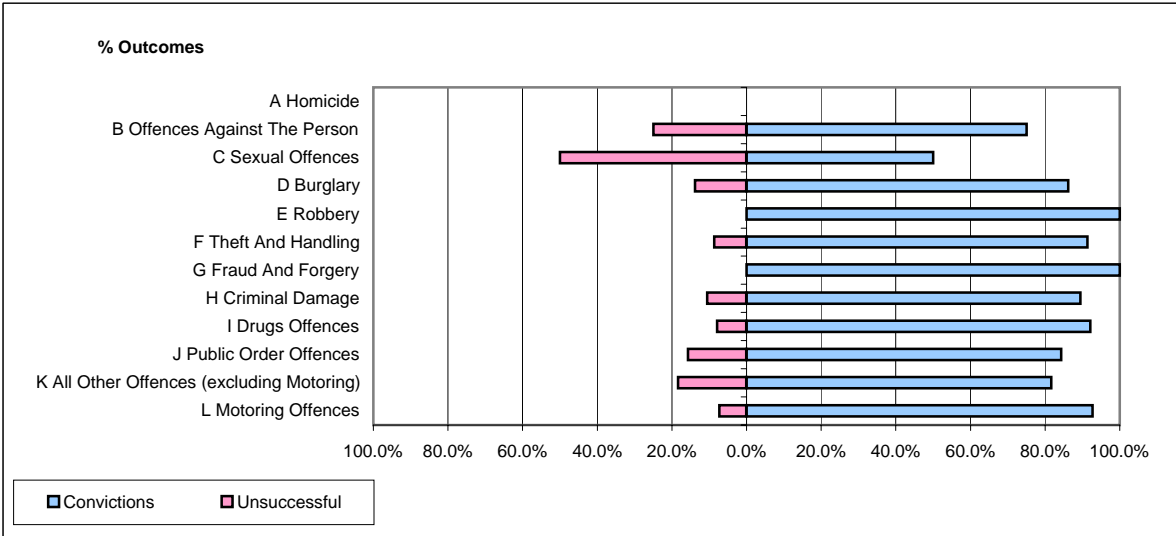


CPS OUTCOMES BY PRINCIPAL OFFENCE CATEGORY

March 2006

P11-Durham



	Convictions		Unsuccessful	
	Number of Defendants	%	Number of Defendants	%
A Homicide	0	#DIV/0!	0	#DIV/0!
B Offences Against The Person	147	75.0%	49	25.0%
C Sexual Offences	7	50.0%	7	50.0%
D Burglary	25	86.2%	4	13.8%
E Robbery	7	100.0%	0	0.0%
F Theft And Handling	137	91.3%	13	8.7%
G Fraud And Forgery	9	100.0%	0	0.0%
H Criminal Damage	76	89.4%	9	10.6%
I Drugs Offences	35	92.1%	3	7.9%
J Public Order Offences	102	84.3%	19	15.7%
K All Other Offences (excluding Motoring)	40	81.6%	9	18.4%
L Motoring Offences	230	92.7%	18	7.3%
Admin Finalisations	0	0.0%	11	100.0%
TOTAL	815	85.2%	142	14.8%