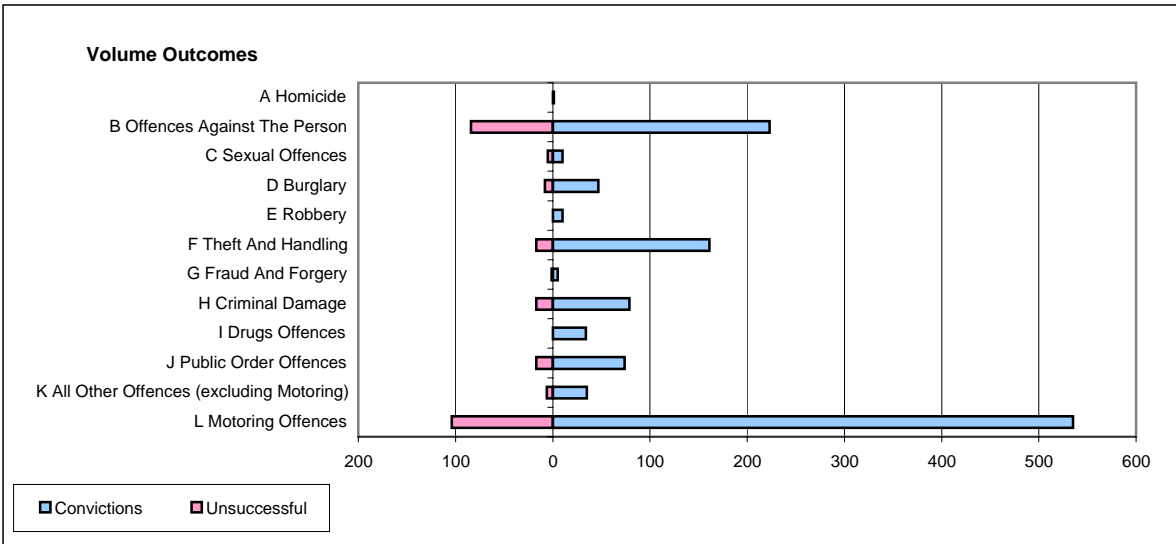
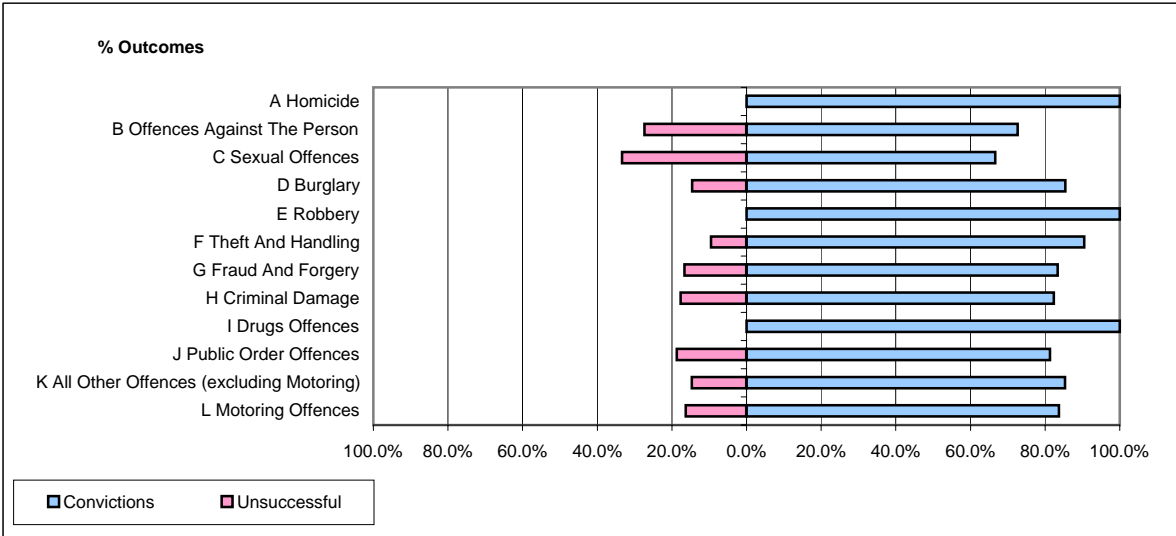


CPS OUTCOMES BY PRINCIPAL OFFENCE CATEGORY

March 2006

P04-Cheshire



	Convictions		Unsuccessful	
	Number of Defendants	%	Number of Defendants	%
A Homicide	1	100.0%	0	0.0%
B Offences Against The Person	223	72.6%	84	27.4%
C Sexual Offences	10	66.7%	5	33.3%
D Burglary	47	85.5%	8	14.5%
E Robbery	10	100.0%	0	0.0%
F Theft And Handling	161	90.4%	17	9.6%
G Fraud And Forgery	5	83.3%	1	16.7%
H Criminal Damage	79	82.3%	17	17.7%
I Drugs Offences	34	100.0%	0	0.0%
J Public Order Offences	74	81.3%	17	18.7%
K All Other Offences (excluding Motoring)	35	85.4%	6	14.6%
L Motoring Offences	535	83.7%	104	16.3%
Admin Finalisations	0	0.0%	23	100.0%
TOTAL	1,214	81.1%	282	18.9%