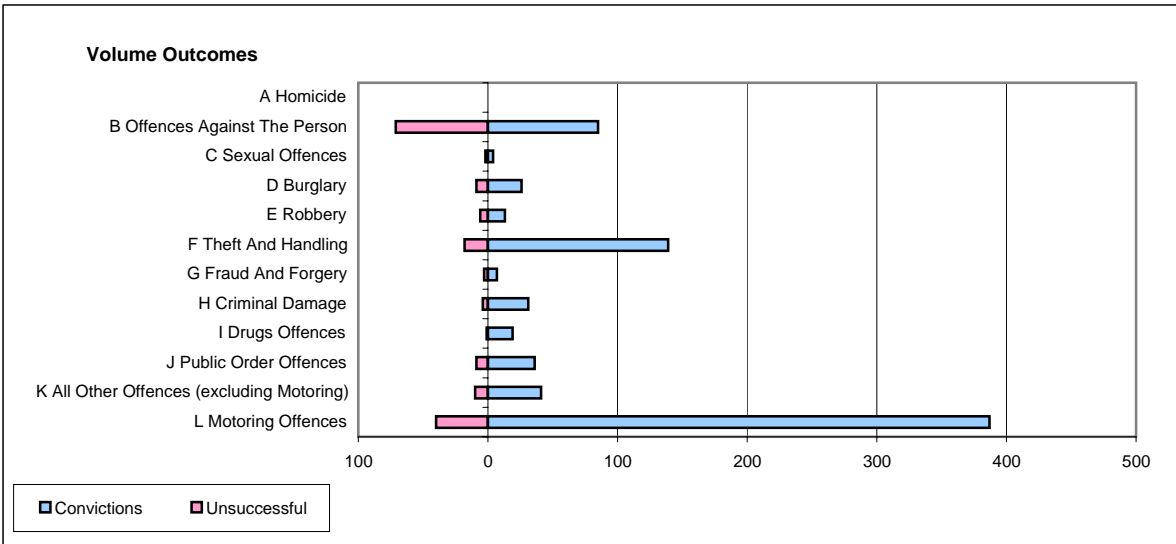
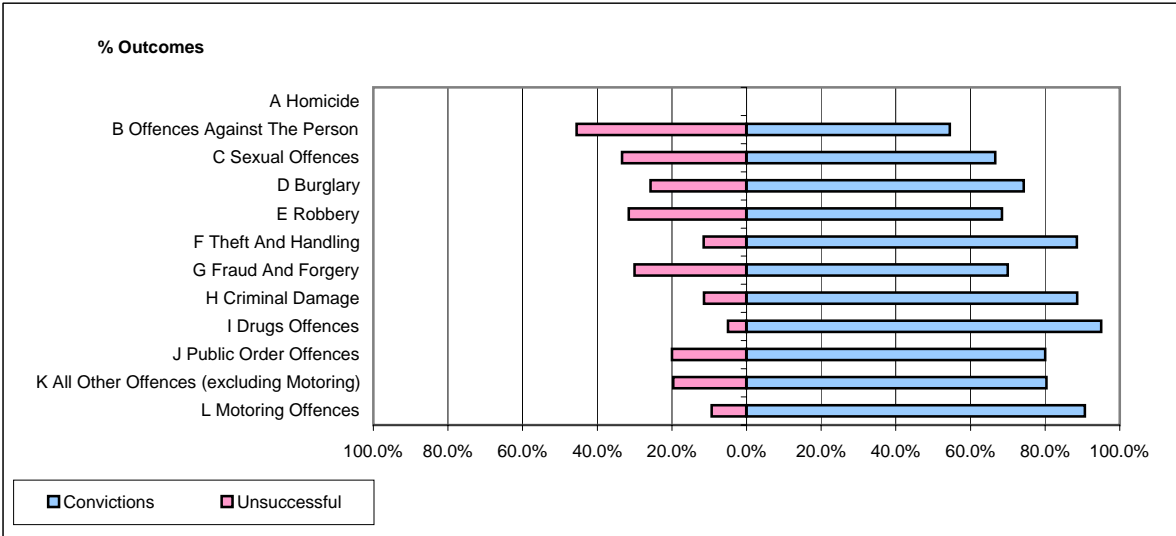


**CPS OUTCOMES BY PRINCIPAL OFFENCE CATEGORY**

**March 2006**

**P02-Bedfordshire**



	Convictions		Unsuccessful	
	Number of Defendants	%	Number of Defendants	%
<b>A Homicide</b>	<b>0</b>	<b>#DIV/0!</b>	<b>0</b>	<b>#DIV/0!</b>
<b>B Offences Against The Person</b>	<b>85</b>	<b>54.5%</b>	<b>71</b>	<b>45.5%</b>
<b>C Sexual Offences</b>	<b>4</b>	<b>66.7%</b>	<b>2</b>	<b>33.3%</b>
<b>D Burglary</b>	<b>26</b>	<b>74.3%</b>	<b>9</b>	<b>25.7%</b>
<b>E Robbery</b>	<b>13</b>	<b>68.4%</b>	<b>6</b>	<b>31.6%</b>
<b>F Theft And Handling</b>	<b>139</b>	<b>88.5%</b>	<b>18</b>	<b>11.5%</b>
<b>G Fraud And Forgery</b>	<b>7</b>	<b>70.0%</b>	<b>3</b>	<b>30.0%</b>
<b>H Criminal Damage</b>	<b>31</b>	<b>88.6%</b>	<b>4</b>	<b>11.4%</b>
<b>I Drugs Offences</b>	<b>19</b>	<b>95.0%</b>	<b>1</b>	<b>5.0%</b>
<b>J Public Order Offences</b>	<b>36</b>	<b>80.0%</b>	<b>9</b>	<b>20.0%</b>
<b>K All Other Offences (excluding Motoring)</b>	<b>41</b>	<b>80.4%</b>	<b>10</b>	<b>19.6%</b>
<b>L Motoring Offences</b>	<b>387</b>	<b>90.6%</b>	<b>40</b>	<b>9.4%</b>
<b>Admin Finalisations</b>	<b>0</b>	<b>0.0%</b>	<b>8</b>	<b>100.0%</b>
<b>TOTAL</b>	<b>788</b>	<b>81.3%</b>	<b>181</b>	<b>18.7%</b>