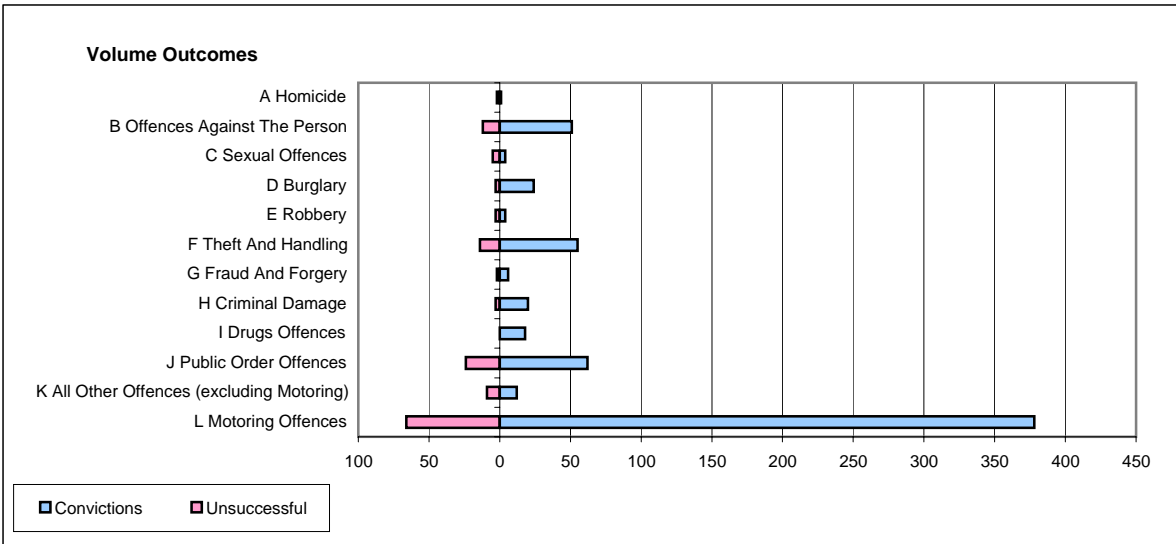
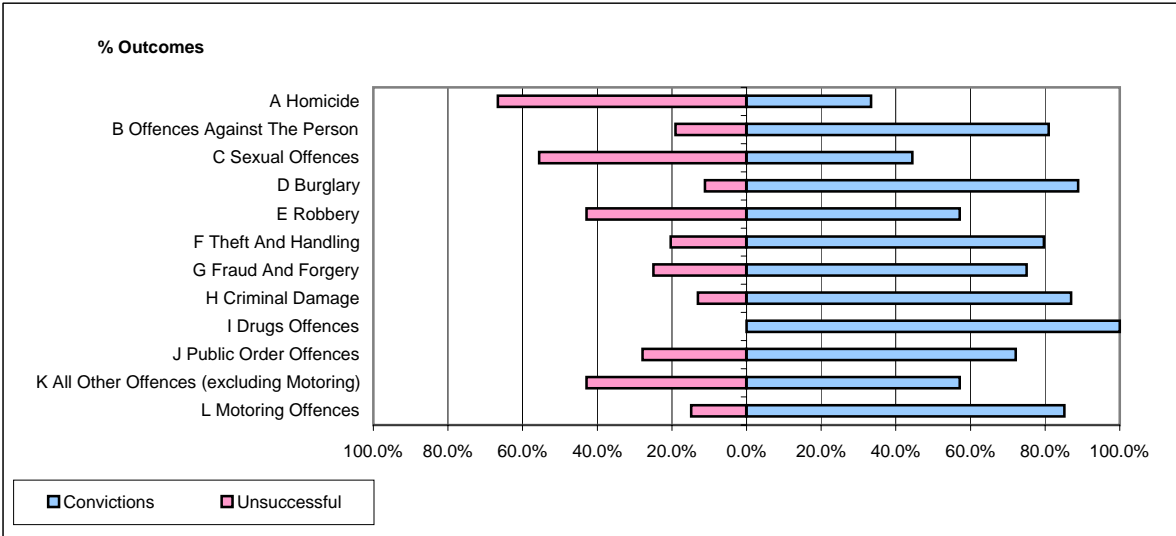


CPS OUTCOMES BY PRINCIPAL OFFENCE CATEGORY

February 2006

P43-Wiltshire



	Convictions		Unsuccessful	
	Number of Defendants	%	Number of Defendants	%
A Homicide	1	33.3%	2	66.7%
B Offences Against The Person	51	81.0%	12	19.0%
C Sexual Offences	4	44.4%	5	55.6%
D Burglary	24	88.9%	3	11.1%
E Robbery	4	57.1%	3	42.9%
F Theft And Handling	55	79.7%	14	20.3%
G Fraud And Forgery	6	75.0%	2	25.0%
H Criminal Damage	20	87.0%	3	13.0%
I Drugs Offences	18	100.0%	0	0.0%
J Public Order Offences	62	72.1%	24	27.9%
K All Other Offences (excluding Motoring)	12	57.1%	9	42.9%
L Motoring Offences	378	85.1%	66	14.9%
Admin Finalisations	0	0.0%	15	100.0%
TOTAL	635	80.1%	158	19.9%