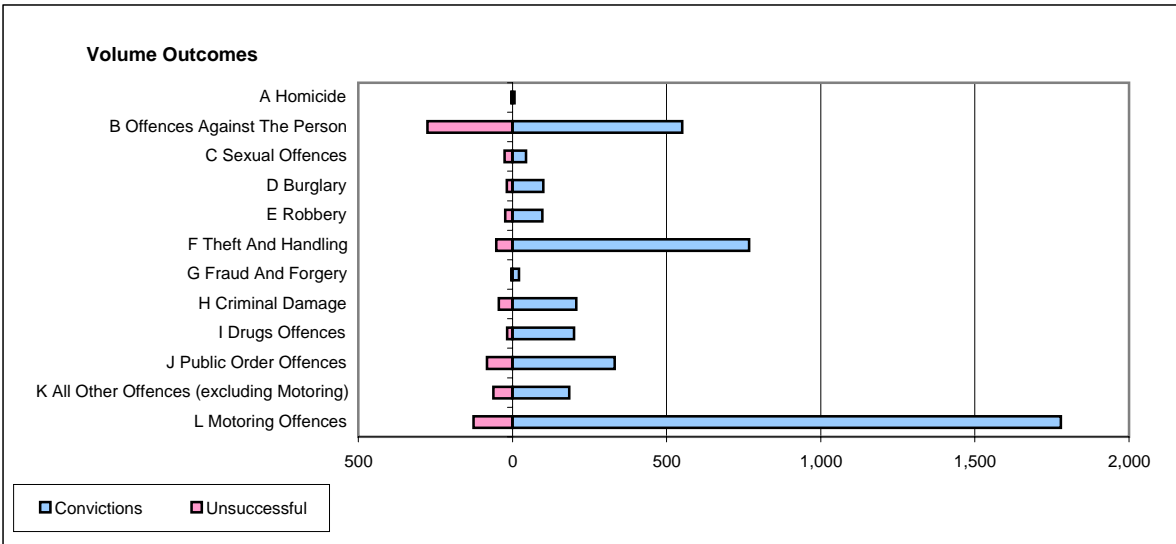
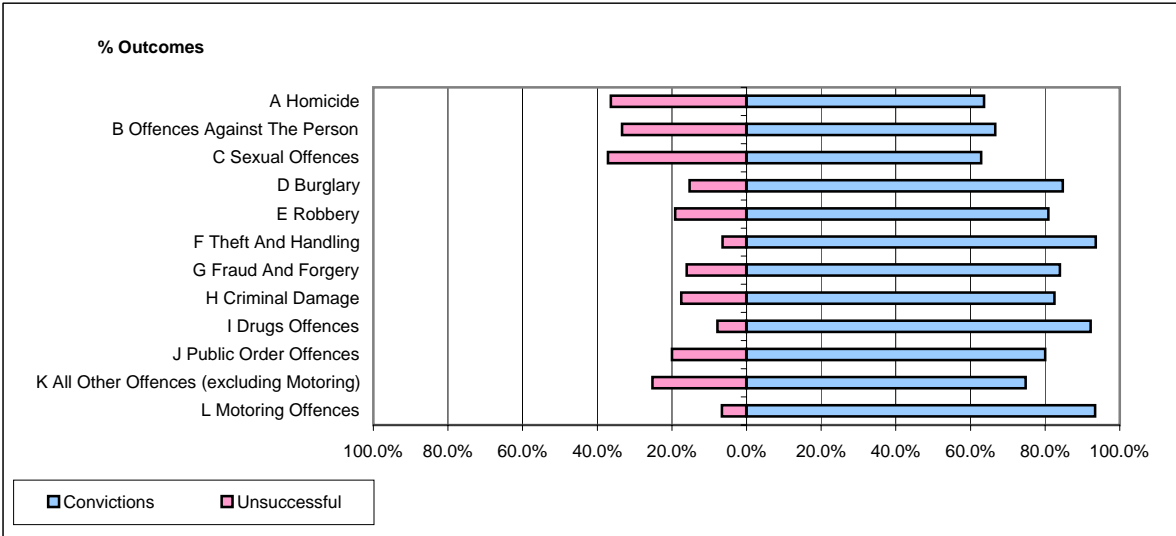


CPS OUTCOMES BY PRINCIPAL OFFENCE CATEGORY

February 2006

P41-WestMidlands



	Convictions		Unsuccessful	
	Number of Defendants	%	Number of Defendants	%
A Homicide	7	63.6%	4	36.4%
B Offences Against The Person	551	66.6%	276	33.4%
C Sexual Offences	44	62.9%	26	37.1%
D Burglary	100	84.7%	18	15.3%
E Robbery	97	80.8%	23	19.2%
F Theft And Handling	768	93.5%	53	6.5%
G Fraud And Forgery	21	84.0%	4	16.0%
H Criminal Damage	207	82.5%	44	17.5%
I Drugs Offences	200	92.2%	17	7.8%
J Public Order Offences	332	80.0%	83	20.0%
K All Other Offences (excluding Motoring)	184	74.8%	62	25.2%
L Motoring Offences	1,779	93.4%	126	6.6%
Admin Finalisations	0	0.0%	97	100.0%
TOTAL	4,290	83.7%	833	16.3%