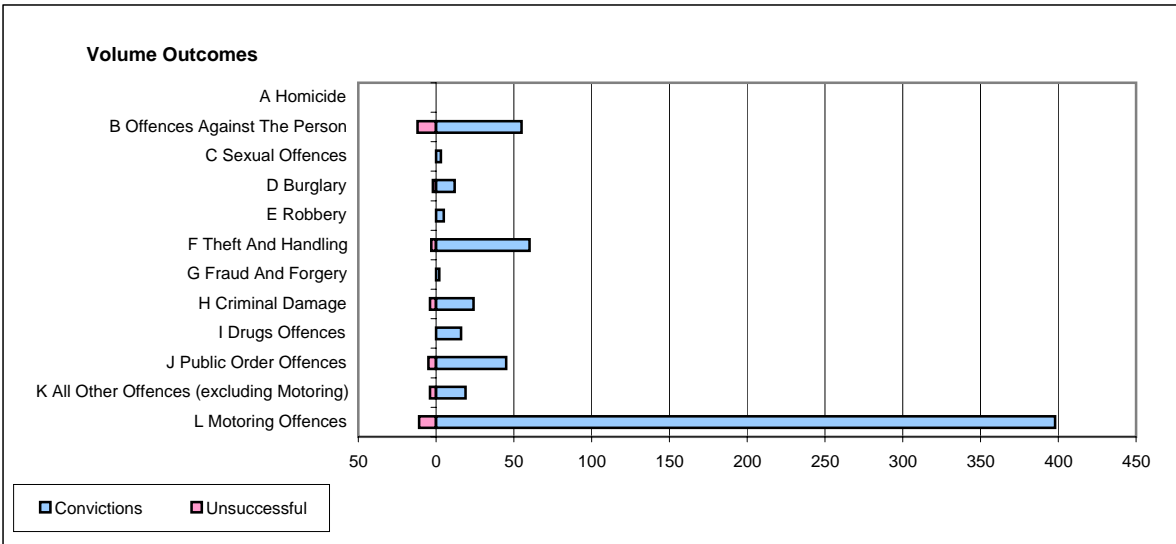
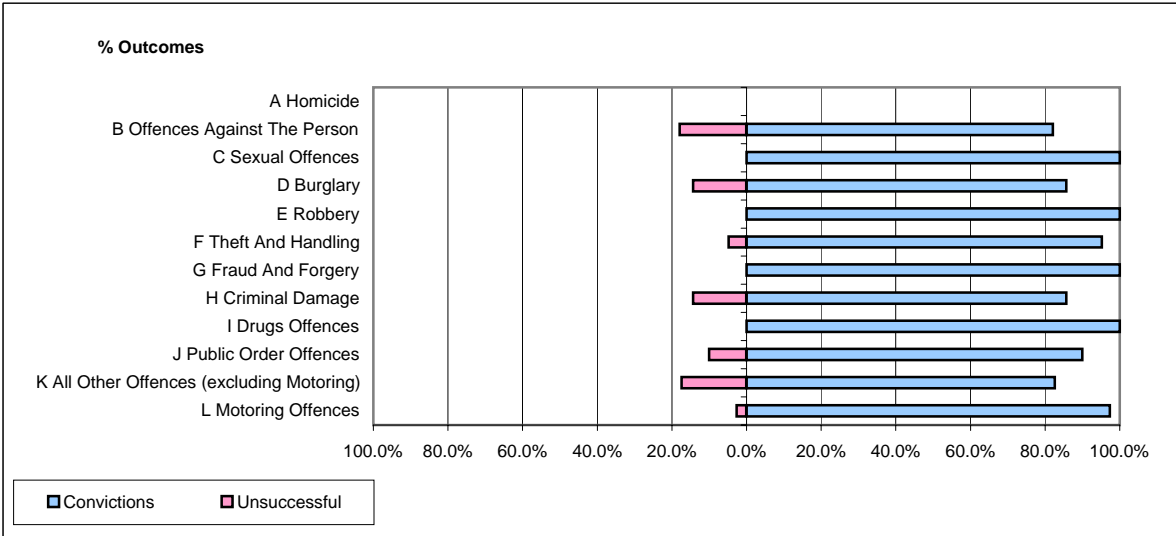


**CPS OUTCOMES BY PRINCIPAL OFFENCE CATEGORY**

**February 2006**

**P39-Warwickshire**



	Convictions		Unsuccessful	
	Number of Defendants	%	Number of Defendants	%
<b>A Homicide</b>	<b>0</b>	<b>#DIV/0!</b>	<b>0</b>	<b>#DIV/0!</b>
<b>B Offences Against The Person</b>	<b>55</b>	<b>82.1%</b>	<b>12</b>	<b>17.9%</b>
<b>C Sexual Offences</b>	<b>3</b>	<b>100.0%</b>	<b>0</b>	<b>0.0%</b>
<b>D Burglary</b>	<b>12</b>	<b>85.7%</b>	<b>2</b>	<b>14.3%</b>
<b>E Robbery</b>	<b>5</b>	<b>100.0%</b>	<b>0</b>	<b>0.0%</b>
<b>F Theft And Handling</b>	<b>60</b>	<b>95.2%</b>	<b>3</b>	<b>4.8%</b>
<b>G Fraud And Forgery</b>	<b>2</b>	<b>100.0%</b>	<b>0</b>	<b>0.0%</b>
<b>H Criminal Damage</b>	<b>24</b>	<b>85.7%</b>	<b>4</b>	<b>14.3%</b>
<b>I Drugs Offences</b>	<b>16</b>	<b>100.0%</b>	<b>0</b>	<b>0.0%</b>
<b>J Public Order Offences</b>	<b>45</b>	<b>90.0%</b>	<b>5</b>	<b>10.0%</b>
<b>K All Other Offences (excluding Motoring)</b>	<b>19</b>	<b>82.6%</b>	<b>4</b>	<b>17.4%</b>
<b>L Motoring Offences</b>	<b>398</b>	<b>97.3%</b>	<b>11</b>	<b>2.7%</b>
<b>Admin Finalisations</b>	<b>0</b>	<b>0.0%</b>	<b>4</b>	<b>100.0%</b>
<b>TOTAL</b>	<b>639</b>	<b>93.4%</b>	<b>45</b>	<b>6.6%</b>