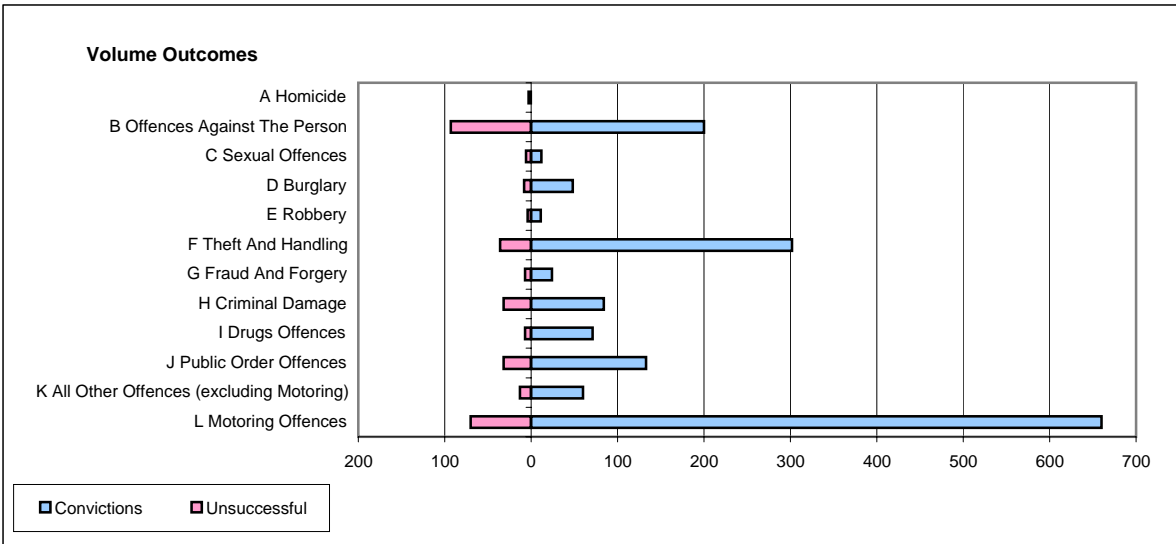
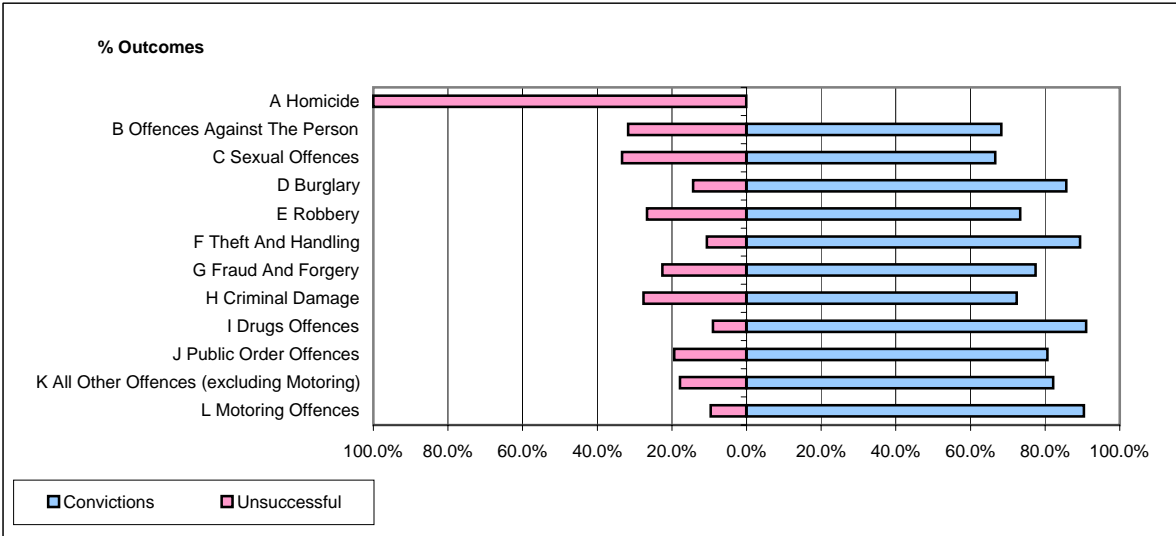


**CPS OUTCOMES BY PRINCIPAL OFFENCE CATEGORY**

**February 2006**

**P37-Sussex**



	Convictions		Unsuccessful	
	Number of Defendants	%	Number of Defendants	%
<b>A Homicide</b>	<b>0</b>	<b>0.0%</b>	<b>3</b>	<b>100.0%</b>
<b>B Offences Against The Person</b>	<b>200</b>	<b>68.3%</b>	<b>93</b>	<b>31.7%</b>
<b>C Sexual Offences</b>	<b>12</b>	<b>66.7%</b>	<b>6</b>	<b>33.3%</b>
<b>D Burglary</b>	<b>48</b>	<b>85.7%</b>	<b>8</b>	<b>14.3%</b>
<b>E Robbery</b>	<b>11</b>	<b>73.3%</b>	<b>4</b>	<b>26.7%</b>
<b>F Theft And Handling</b>	<b>302</b>	<b>89.3%</b>	<b>36</b>	<b>10.7%</b>
<b>G Fraud And Forgery</b>	<b>24</b>	<b>77.4%</b>	<b>7</b>	<b>22.6%</b>
<b>H Criminal Damage</b>	<b>84</b>	<b>72.4%</b>	<b>32</b>	<b>27.6%</b>
<b>I Drugs Offences</b>	<b>71</b>	<b>91.0%</b>	<b>7</b>	<b>9.0%</b>
<b>J Public Order Offences</b>	<b>133</b>	<b>80.6%</b>	<b>32</b>	<b>19.4%</b>
<b>K All Other Offences (excluding Motoring)</b>	<b>60</b>	<b>82.2%</b>	<b>13</b>	<b>17.8%</b>
<b>L Motoring Offences</b>	<b>660</b>	<b>90.4%</b>	<b>70</b>	<b>9.6%</b>
<b>Admin Finalisations</b>	<b>0</b>	<b>0.0%</b>	<b>48</b>	<b>100.0%</b>
<b>TOTAL</b>	<b>1,605</b>	<b>81.7%</b>	<b>359</b>	<b>18.3%</b>