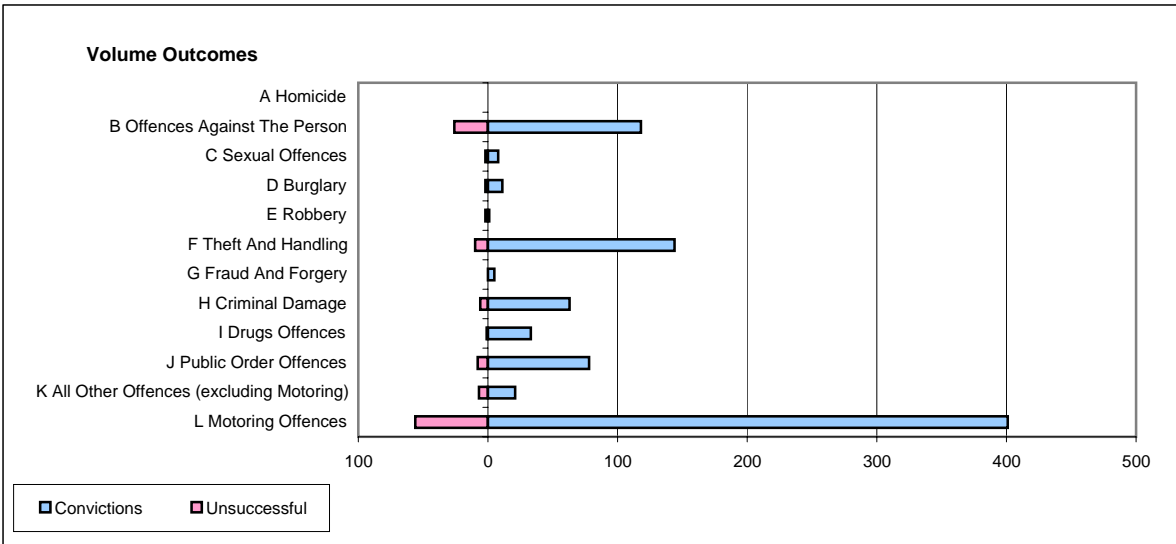
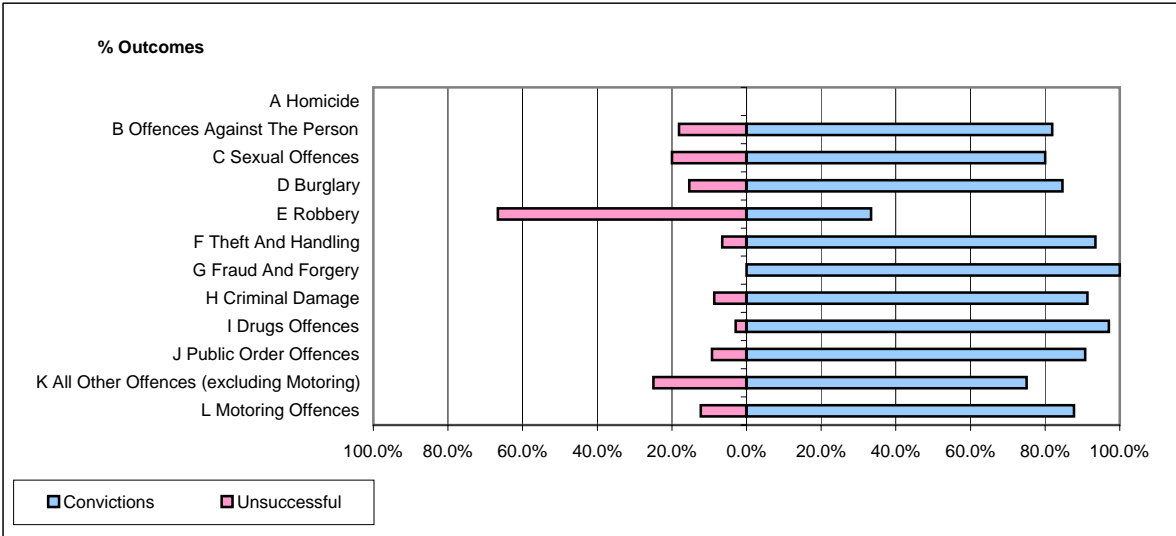


CPS OUTCOMES BY PRINCIPAL OFFENCE CATEGORY

February 2006

P35-Suffolk



	Convictions		Unsuccessful	
	Number of Defendants	%	Number of Defendants	%
A Homicide	0	#DIV/0!	0	#DIV/0!
B Offences Against The Person	118	81.9%	26	18.1%
C Sexual Offences	8	80.0%	2	20.0%
D Burglary	11	84.6%	2	15.4%
E Robbery	1	33.3%	2	66.7%
F Theft And Handling	144	93.5%	10	6.5%
G Fraud And Forgery	5	100.0%	0	0.0%
H Criminal Damage	63	91.3%	6	8.7%
I Drugs Offences	33	97.1%	1	2.9%
J Public Order Offences	78	90.7%	8	9.3%
K All Other Offences (excluding Motoring)	21	75.0%	7	25.0%
L Motoring Offences	401	87.7%	56	12.3%
Admin Finalisations	0	0.0%	26	100.0%
TOTAL	883	85.8%	146	14.2%