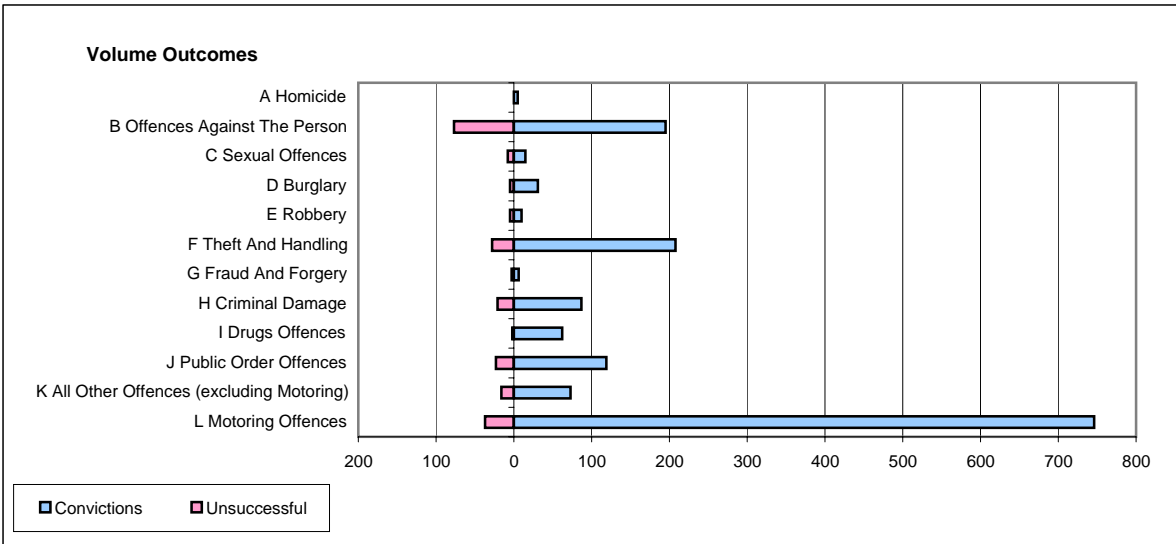
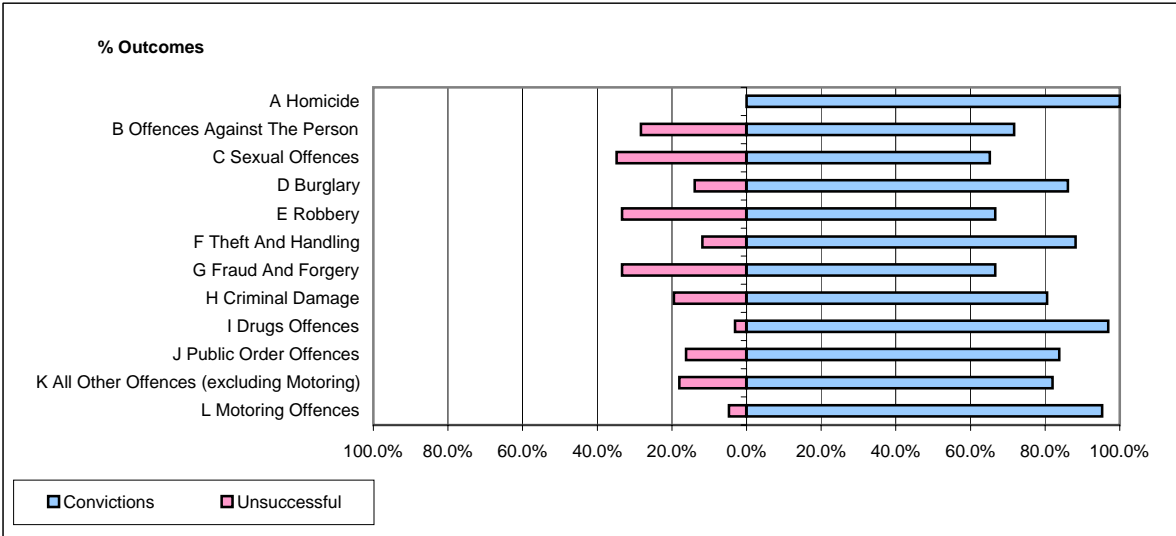


CPS OUTCOMES BY PRINCIPAL OFFENCE CATEGORY

February 2006

P34-Staffordshire



	Convictions		Unsuccessful	
	Number of Defendants	%	Number of Defendants	%
A Homicide	5	100.0%	0	0.0%
B Offences Against The Person	195	71.7%	77	28.3%
C Sexual Offences	15	65.2%	8	34.8%
D Burglary	31	86.1%	5	13.9%
E Robbery	10	66.7%	5	33.3%
F Theft And Handling	208	88.1%	28	11.9%
G Fraud And Forgery	6	66.7%	3	33.3%
H Criminal Damage	87	80.6%	21	19.4%
I Drugs Offences	62	96.9%	2	3.1%
J Public Order Offences	119	83.8%	23	16.2%
K All Other Offences (excluding Motoring)	73	82.0%	16	18.0%
L Motoring Offences	746	95.3%	37	4.7%
Admin Finalisations	0	0.0%	36	100.0%
TOTAL	1,557	85.6%	261	14.4%