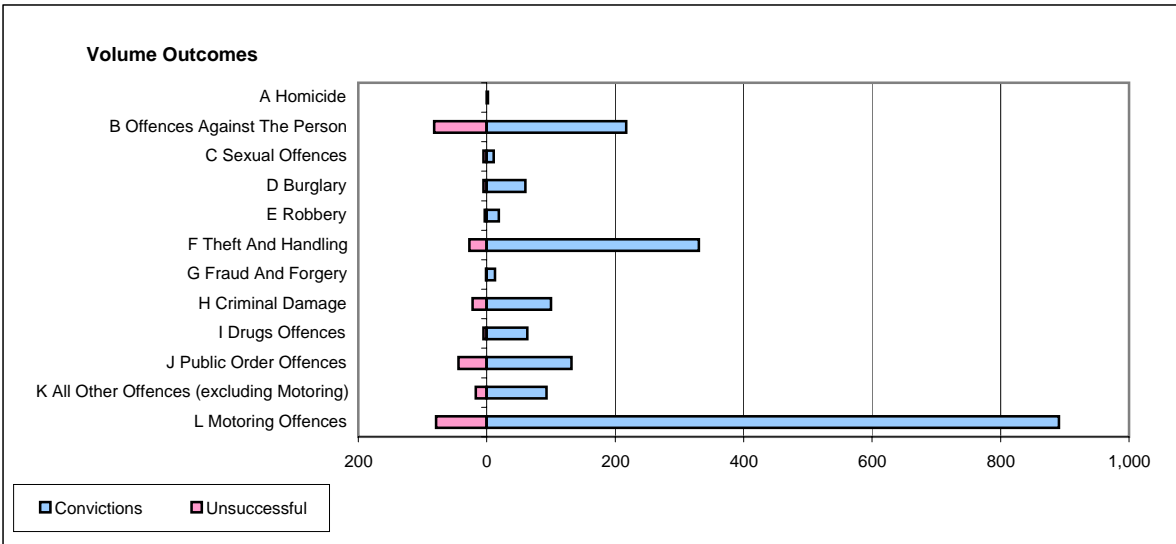
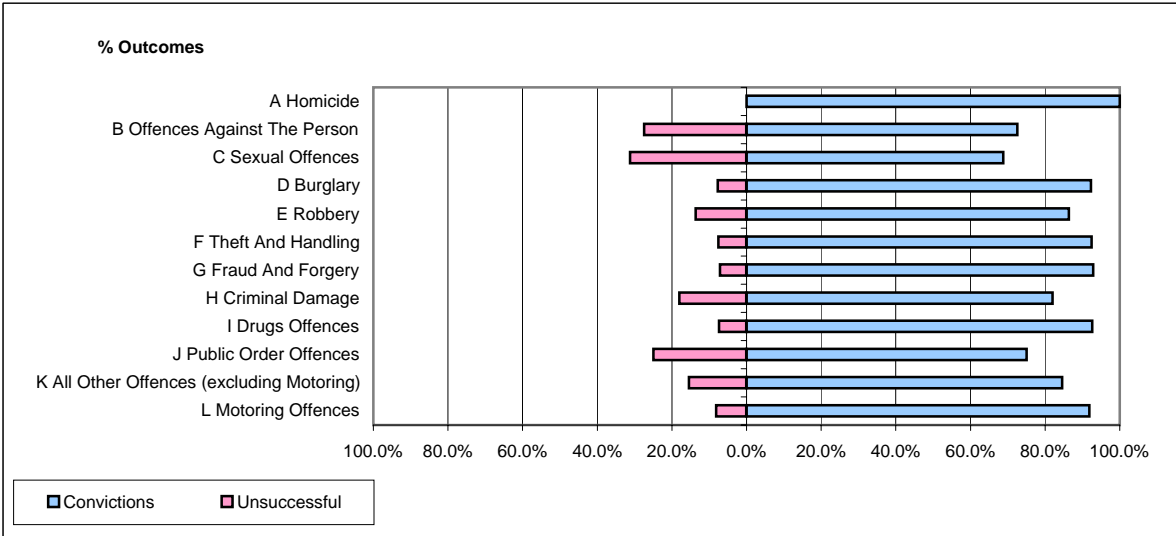


**CPS OUTCOMES BY PRINCIPAL OFFENCE CATEGORY**

**February 2006**

**P33-SouthYorkshire**



	Convictions		Unsuccessful	
	Number of Defendants	%	Number of Defendants	%
<b>A Homicide</b>	<b>2</b>	<b>100.0%</b>	<b>0</b>	<b>0.0%</b>
<b>B Offences Against The Person</b>	<b>217</b>	<b>72.6%</b>	<b>82</b>	<b>27.4%</b>
<b>C Sexual Offences</b>	<b>11</b>	<b>68.8%</b>	<b>5</b>	<b>31.3%</b>
<b>D Burglary</b>	<b>60</b>	<b>92.3%</b>	<b>5</b>	<b>7.7%</b>
<b>E Robbery</b>	<b>19</b>	<b>86.4%</b>	<b>3</b>	<b>13.6%</b>
<b>F Theft And Handling</b>	<b>330</b>	<b>92.4%</b>	<b>27</b>	<b>7.6%</b>
<b>G Fraud And Forgery</b>	<b>13</b>	<b>92.9%</b>	<b>1</b>	<b>7.1%</b>
<b>H Criminal Damage</b>	<b>100</b>	<b>82.0%</b>	<b>22</b>	<b>18.0%</b>
<b>I Drugs Offences</b>	<b>63</b>	<b>92.6%</b>	<b>5</b>	<b>7.4%</b>
<b>J Public Order Offences</b>	<b>132</b>	<b>75.0%</b>	<b>44</b>	<b>25.0%</b>
<b>K All Other Offences (excluding Motoring)</b>	<b>93</b>	<b>84.5%</b>	<b>17</b>	<b>15.5%</b>
<b>L Motoring Offences</b>	<b>891</b>	<b>91.9%</b>	<b>79</b>	<b>8.1%</b>
<b>Admin Finalisations</b>	<b>0</b>	<b>0.0%</b>	<b>34</b>	<b>100.0%</b>
<b>TOTAL</b>	<b>1,931</b>	<b>85.6%</b>	<b>324</b>	<b>14.4%</b>