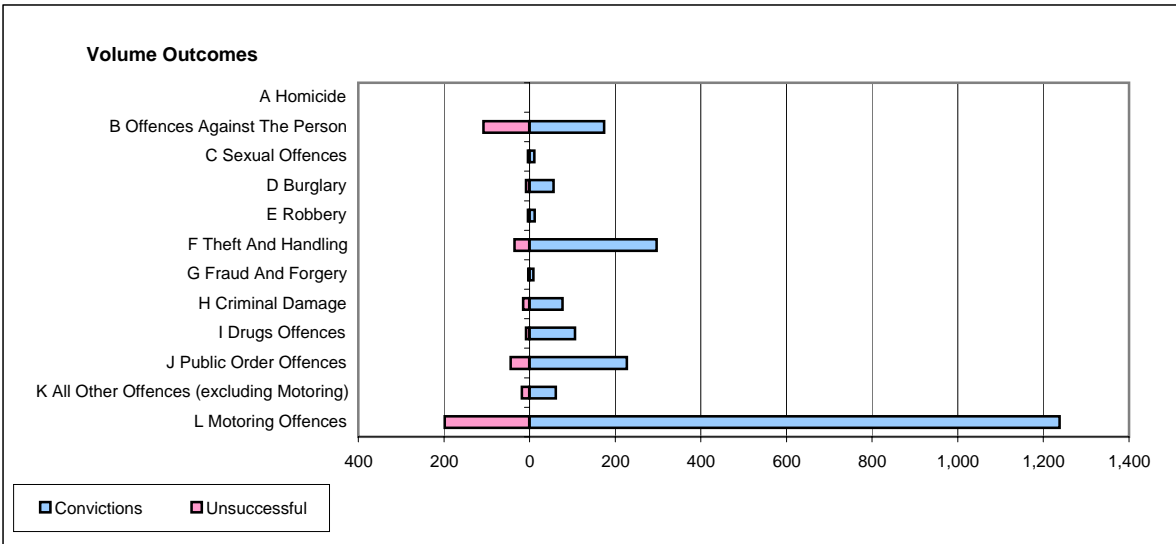
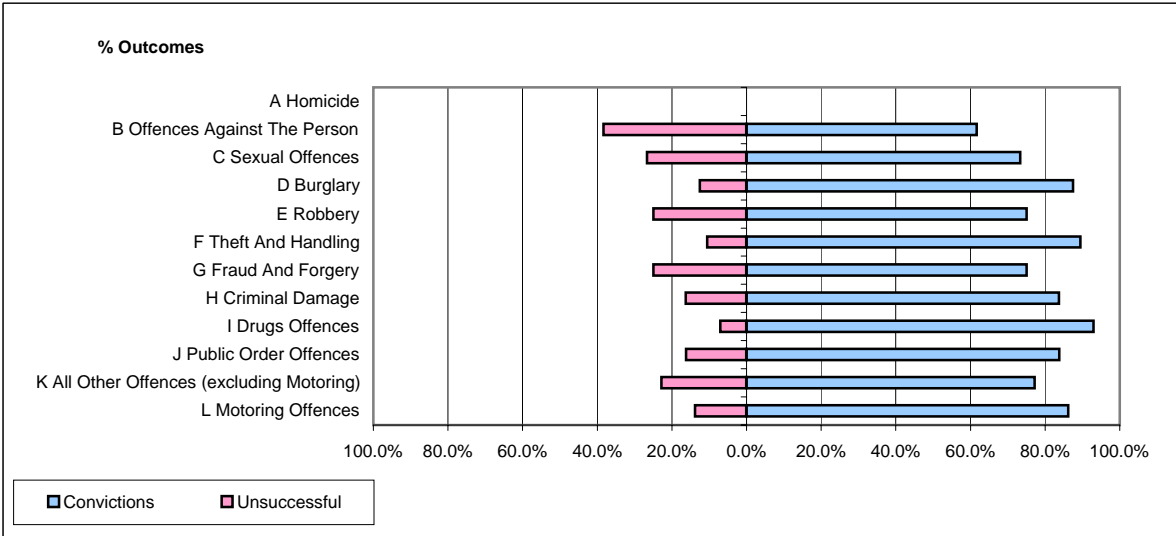


CPS OUTCOMES BY PRINCIPAL OFFENCE CATEGORY

February 2006

P32-SouthWales



	Convictions		Unsuccessful	
	Number of Defendants	%	Number of Defendants	%
A Homicide	0	#DIV/0!	0	#DIV/0!
B Offences Against The Person	174	61.7%	108	38.3%
C Sexual Offences	11	73.3%	4	26.7%
D Burglary	56	87.5%	8	12.5%
E Robbery	12	75.0%	4	25.0%
F Theft And Handling	297	89.5%	35	10.5%
G Fraud And Forgery	9	75.0%	3	25.0%
H Criminal Damage	77	83.7%	15	16.3%
I Drugs Offences	106	93.0%	8	7.0%
J Public Order Offences	227	83.8%	44	16.2%
K All Other Offences (excluding Motoring)	61	77.2%	18	22.8%
L Motoring Offences	1,238	86.2%	198	13.8%
Admin Finalisations	0	0.0%	125	100.0%
TOTAL	2,268	79.9%	570	20.1%