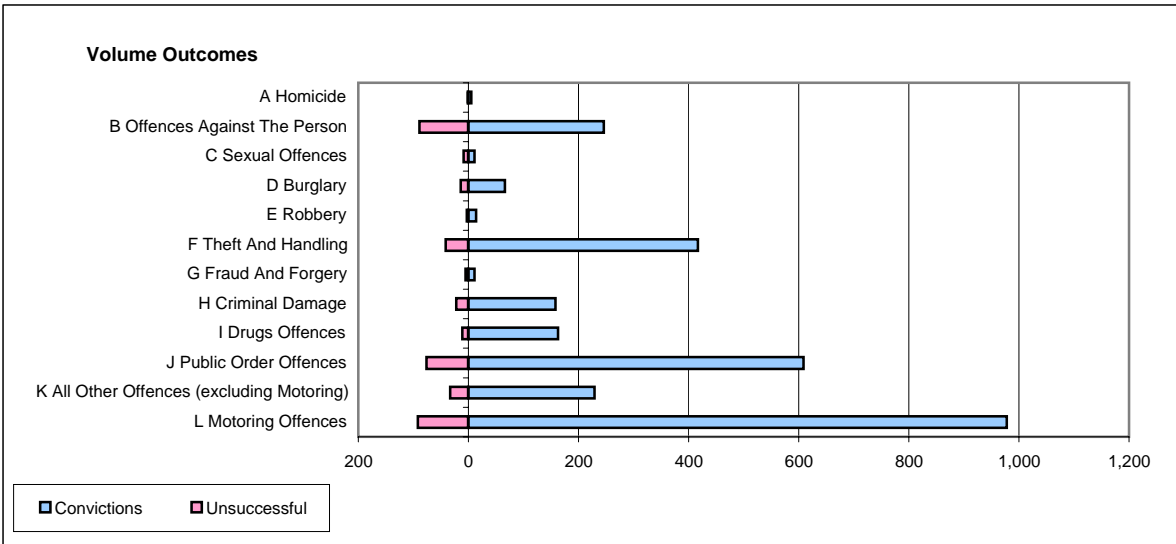
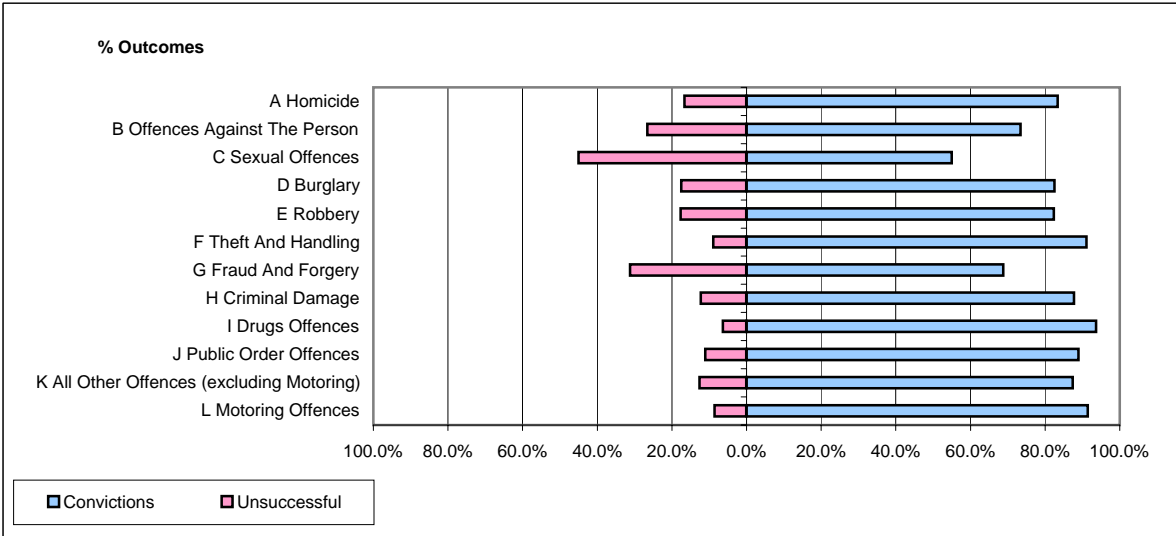


CPS OUTCOMES BY PRINCIPAL OFFENCE CATEGORY

February 2006

P28-Northumbria



	Convictions		Unsuccessful	
	Number of Defendants	%	Number of Defendants	%
A Homicide	5	83.3%	1	16.7%
B Offences Against The Person	246	73.4%	89	26.6%
C Sexual Offences	11	55.0%	9	45.0%
D Burglary	66	82.5%	14	17.5%
E Robbery	14	82.4%	3	17.6%
F Theft And Handling	417	91.0%	41	9.0%
G Fraud And Forgery	11	68.8%	5	31.3%
H Criminal Damage	158	87.8%	22	12.2%
I Drugs Offences	163	93.7%	11	6.3%
J Public Order Offences	609	88.9%	76	11.1%
K All Other Offences (excluding Motoring)	229	87.4%	33	12.6%
L Motoring Offences	978	91.4%	92	8.6%
Admin Finalisations	0	0.0%	66	100.0%
TOTAL	2,907	86.3%	462	13.7%