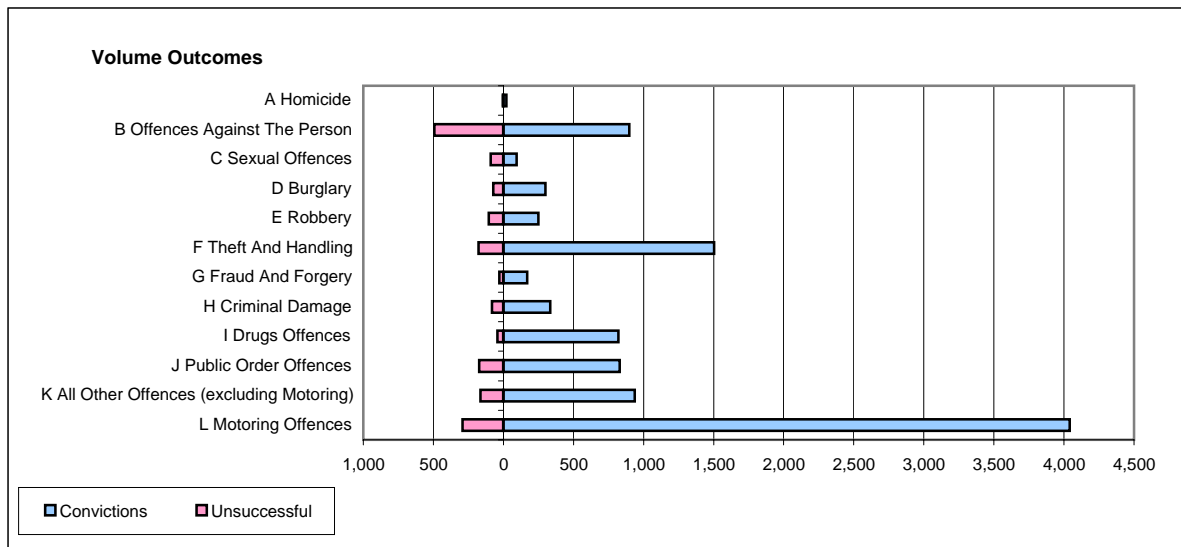
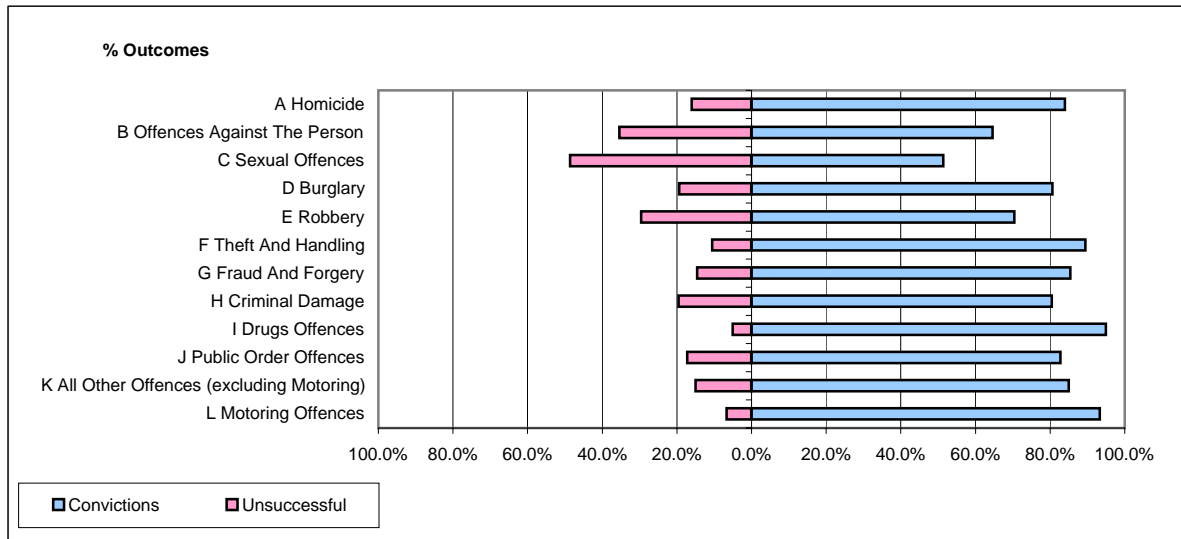


CPS OUTCOMES BY PRINCIPAL OFFENCE CATEGORY

February 2006

P25-Metropolitan&City



	Convictions		Unsuccessful	
	Number of Defendants	%	Number of Defendants	%
A Homicide	21	84.0%	4	16.0%
B Offences Against The Person	899	64.5%	494	35.5%
C Sexual Offences	95	51.4%	90	48.6%
D Burglary	299	80.6%	72	19.4%
E Robbery	250	70.4%	105	29.6%
F Theft And Handling	1,503	89.4%	178	10.6%
G Fraud And Forgery	170	85.4%	29	14.6%
H Criminal Damage	334	80.5%	81	19.5%
I Drugs Offences	821	94.9%	44	5.1%
J Public Order Offences	829	82.7%	173	17.3%
K All Other Offences (excluding Motoring)	936	85.0%	165	15.0%
L Motoring Offences	4,042	93.3%	291	6.7%
Admin Finalisations	0	0.0%	690	100.0%
TOTAL	10,199	80.8%	2,416	19.2%