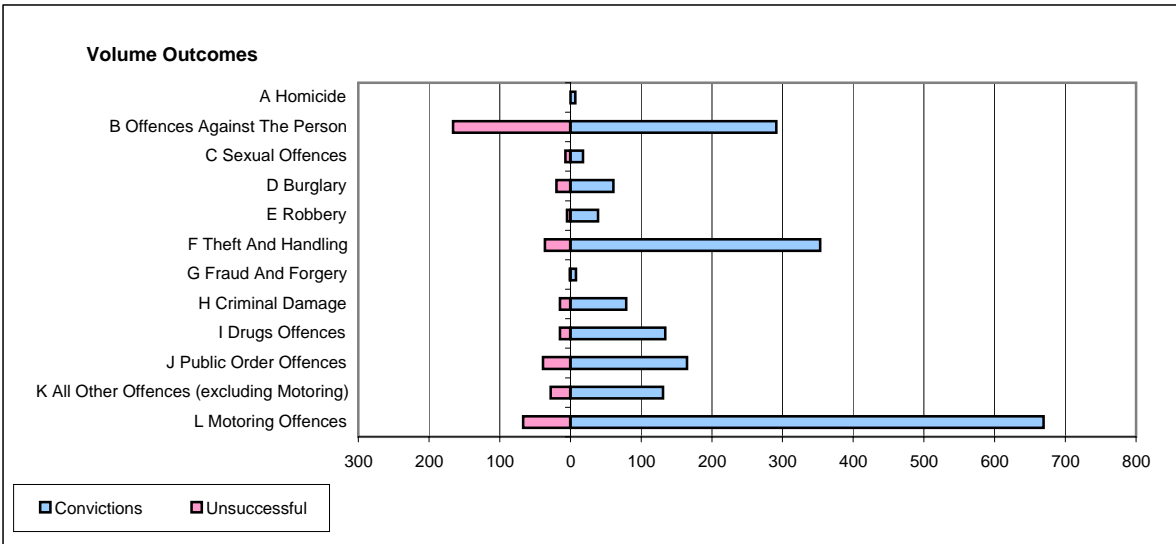
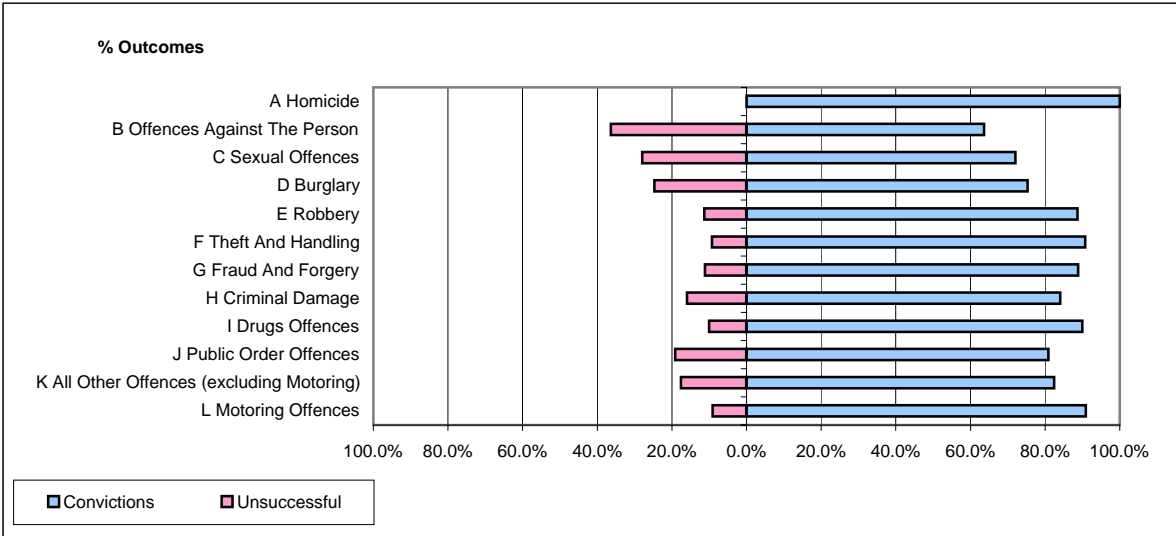


CPS OUTCOMES BY PRINCIPAL OFFENCE CATEGORY

February 2006

P24-Merseyside



	Convictions		Unsuccessful	
	Number of Defendants	%	Number of Defendants	%
A Homicide	7	100.0%	0	0.0%
B Offences Against The Person	291	63.7%	166	36.3%
C Sexual Offences	18	72.0%	7	28.0%
D Burglary	61	75.3%	20	24.7%
E Robbery	39	88.6%	5	11.4%
F Theft And Handling	353	90.7%	36	9.3%
G Fraud And Forgery	8	88.9%	1	11.1%
H Criminal Damage	79	84.0%	15	16.0%
I Drugs Offences	134	89.9%	15	10.1%
J Public Order Offences	165	80.9%	39	19.1%
K All Other Offences (excluding Motoring)	131	82.4%	28	17.6%
L Motoring Offences	669	90.9%	67	9.1%
Admin Finalisations	0	0.0%	61	100.0%
TOTAL	1,955	81.0%	460	19.0%