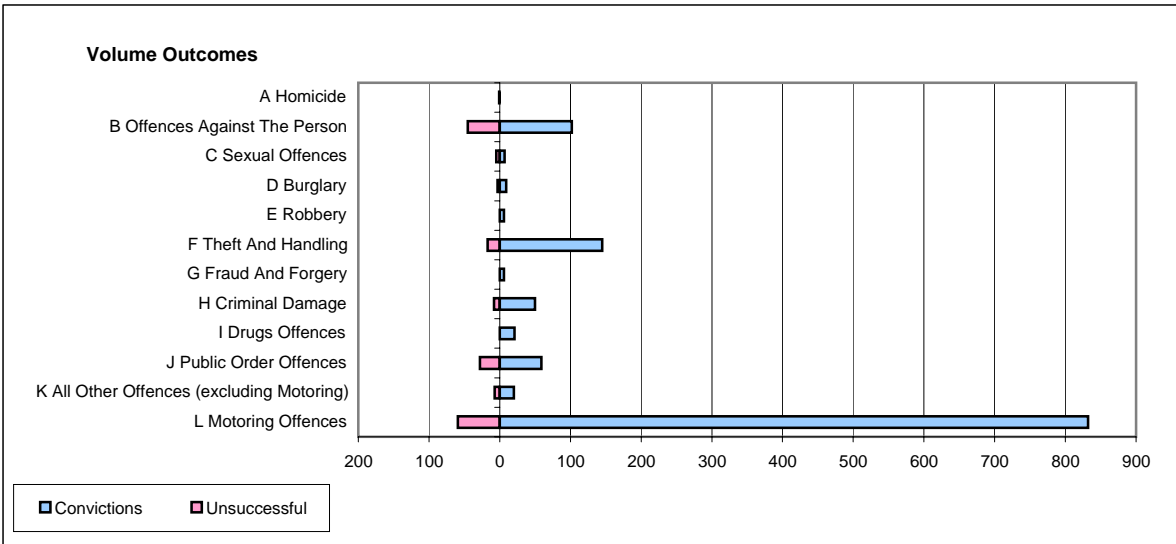
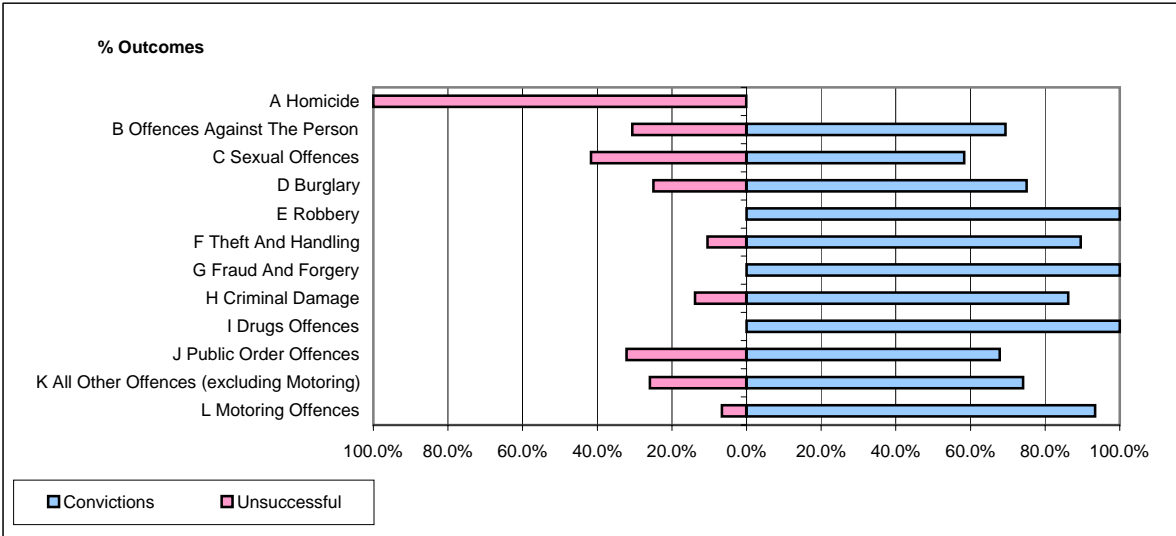


CPS OUTCOMES BY PRINCIPAL OFFENCE CATEGORY

February 2006

P23-Lincolnshire



	Convictions		Unsuccessful	
	Number of Defendants	%	Number of Defendants	%
A Homicide	0	0.0%	1	100.0%
B Offences Against The Person	102	69.4%	45	30.6%
C Sexual Offences	7	58.3%	5	41.7%
D Burglary	9	75.0%	3	25.0%
E Robbery	6	100.0%	0	0.0%
F Theft And Handling	145	89.5%	17	10.5%
G Fraud And Forgery	6	100.0%	0	0.0%
H Criminal Damage	50	86.2%	8	13.8%
I Drugs Offences	21	100.0%	0	0.0%
J Public Order Offences	59	67.8%	28	32.2%
K All Other Offences (excluding Motoring)	20	74.1%	7	25.9%
L Motoring Offences	832	93.4%	59	6.6%
Admin Finalisations	0	0.0%	27	100.0%
TOTAL	1,257	86.3%	200	13.7%