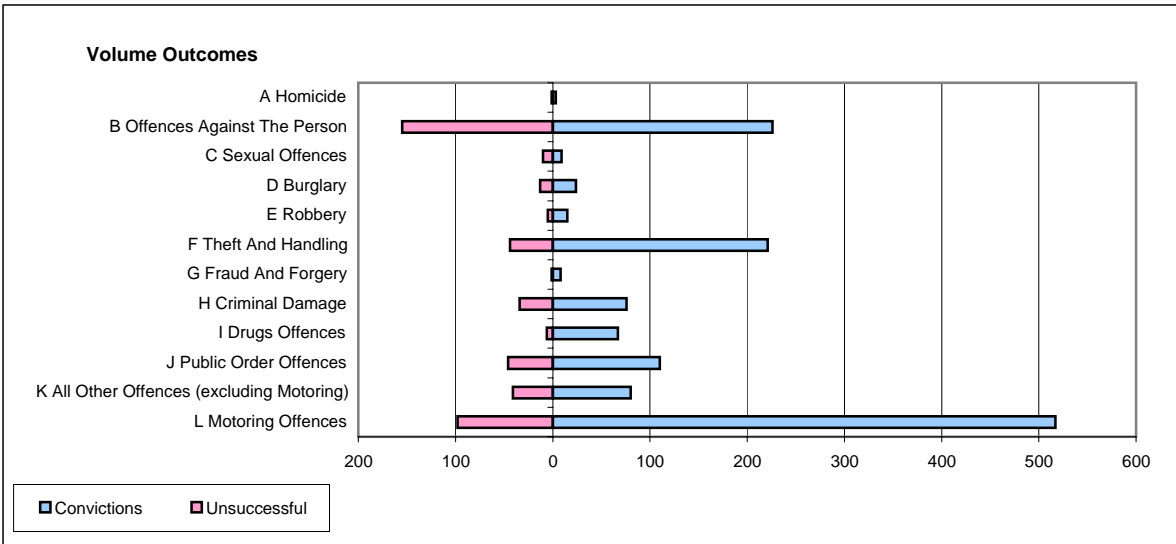
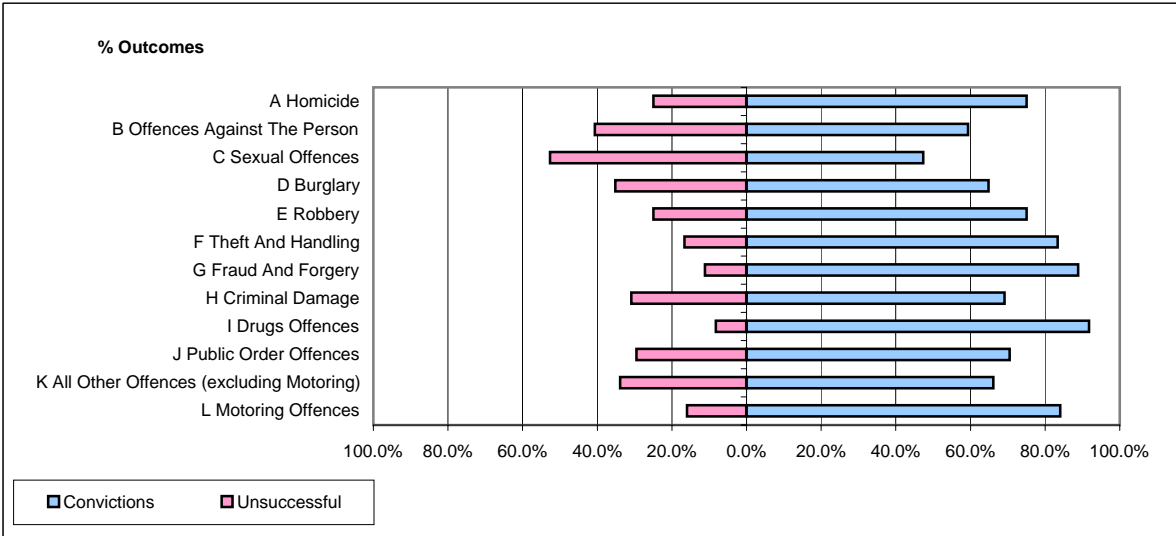


CPS OUTCOMES BY PRINCIPAL OFFENCE CATEGORY

February 2006

P22-Leicestershire



	Convictions		Unsuccessful	
	Number of Defendants	%	Number of Defendants	%
A Homicide	3	75.0%	1	25.0%
B Offences Against The Person	226	59.3%	155	40.7%
C Sexual Offences	9	47.4%	10	52.6%
D Burglary	24	64.9%	13	35.1%
E Robbery	15	75.0%	5	25.0%
F Theft And Handling	221	83.4%	44	16.6%
G Fraud And Forgery	8	88.9%	1	11.1%
H Criminal Damage	76	69.1%	34	30.9%
I Drugs Offences	67	91.8%	6	8.2%
J Public Order Offences	110	70.5%	46	29.5%
K All Other Offences (excluding Motoring)	80	66.1%	41	33.9%
L Motoring Offences	517	84.1%	98	15.9%
Admin Finalisations	0	0.0%	50	100.0%
TOTAL	1,356	72.9%	504	27.1%