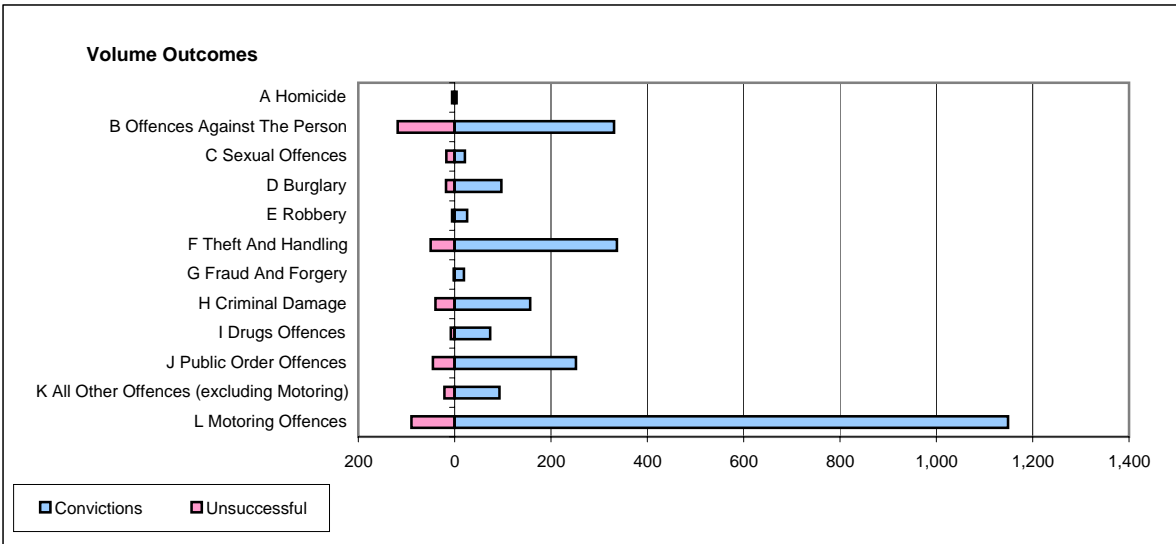
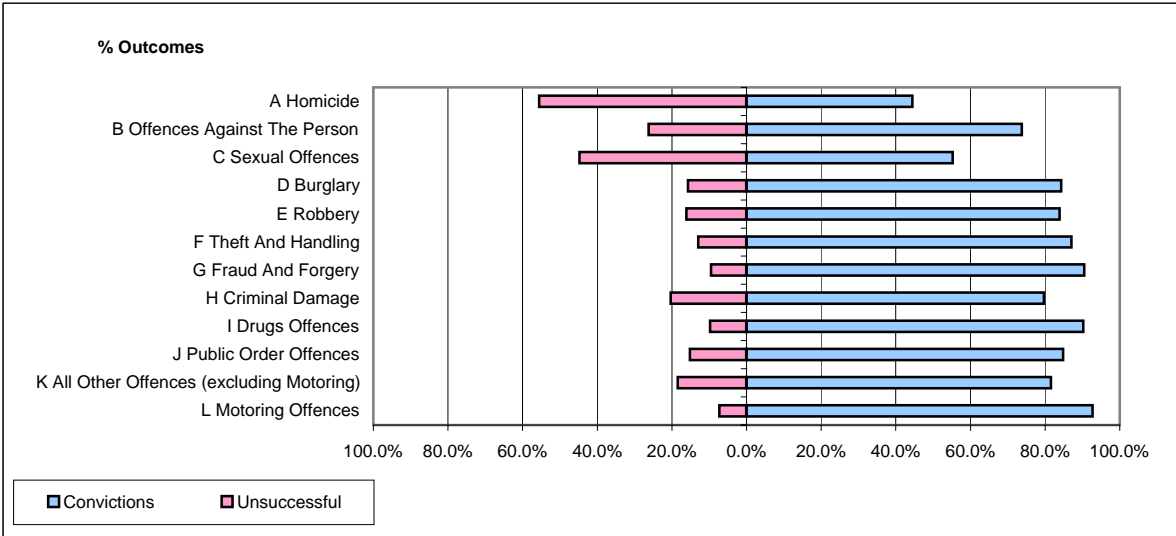


**CPS OUTCOMES BY PRINCIPAL OFFENCE CATEGORY**

**February 2006**

**P21-Lancashire**



	Convictions		Unsuccessful	
	Number of Defendants	%	Number of Defendants	%
<b>A Homicide</b>	<b>4</b>	<b>44.4%</b>	<b>5</b>	<b>55.6%</b>
<b>B Offences Against The Person</b>	<b>331</b>	<b>73.7%</b>	<b>118</b>	<b>26.3%</b>
<b>C Sexual Offences</b>	<b>21</b>	<b>55.3%</b>	<b>17</b>	<b>44.7%</b>
<b>D Burglary</b>	<b>97</b>	<b>84.3%</b>	<b>18</b>	<b>15.7%</b>
<b>E Robbery</b>	<b>26</b>	<b>83.9%</b>	<b>5</b>	<b>16.1%</b>
<b>F Theft And Handling</b>	<b>337</b>	<b>87.1%</b>	<b>50</b>	<b>12.9%</b>
<b>G Fraud And Forgery</b>	<b>19</b>	<b>90.5%</b>	<b>2</b>	<b>9.5%</b>
<b>H Criminal Damage</b>	<b>157</b>	<b>79.7%</b>	<b>40</b>	<b>20.3%</b>
<b>I Drugs Offences</b>	<b>74</b>	<b>90.2%</b>	<b>8</b>	<b>9.8%</b>
<b>J Public Order Offences</b>	<b>252</b>	<b>84.8%</b>	<b>45</b>	<b>15.2%</b>
<b>K All Other Offences (excluding Motoring)</b>	<b>93</b>	<b>81.6%</b>	<b>21</b>	<b>18.4%</b>
<b>L Motoring Offences</b>	<b>1,149</b>	<b>92.7%</b>	<b>90</b>	<b>7.3%</b>
<b>Admin Finalisations</b>	<b>0</b>	<b>0.0%</b>	<b>63</b>	<b>100.0%</b>
<b>TOTAL</b>	<b>2,560</b>	<b>84.2%</b>	<b>482</b>	<b>15.8%</b>