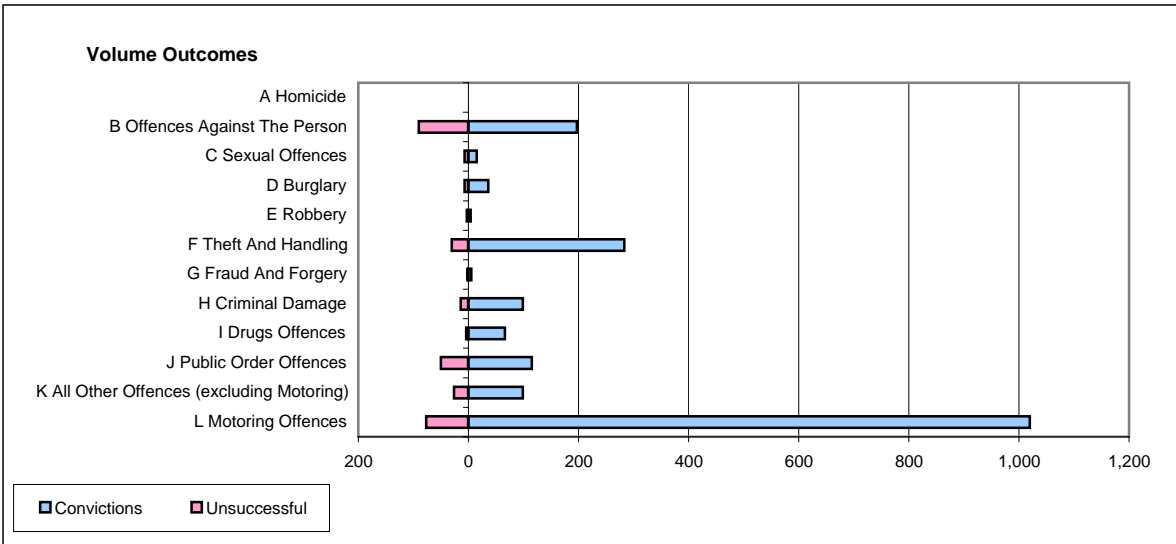
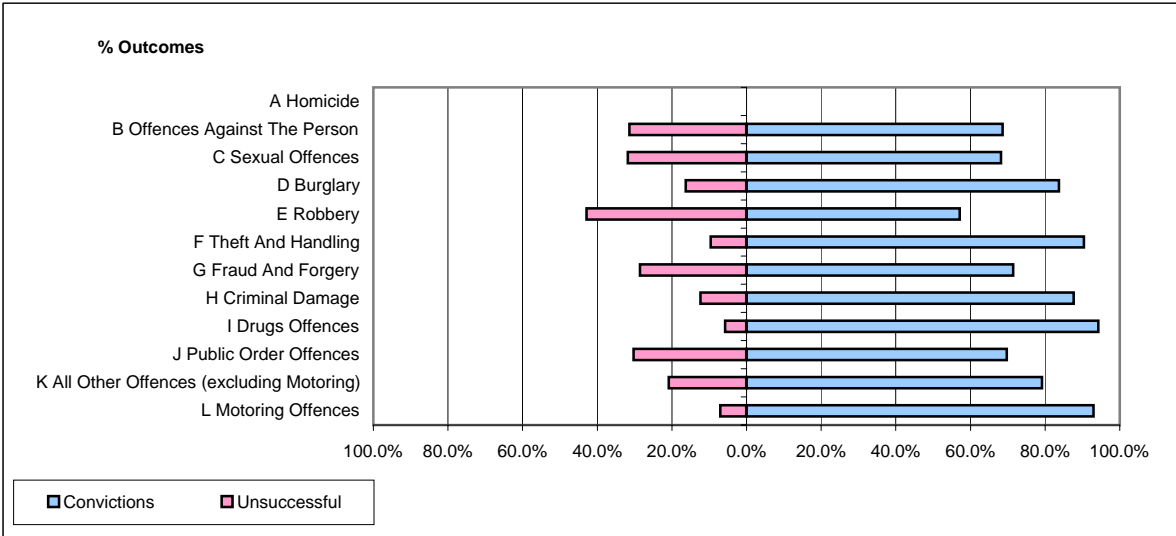


CPS OUTCOMES BY PRINCIPAL OFFENCE CATEGORY

February 2006

P20-Kent



	Convictions		Unsuccessful	
	Number of Defendants	%	Number of Defendants	%
A Homicide	0	#DIV/0!	0	#DIV/0!
B Offences Against The Person	197	68.6%	90	31.4%
C Sexual Offences	15	68.2%	7	31.8%
D Burglary	36	83.7%	7	16.3%
E Robbery	4	57.1%	3	42.9%
F Theft And Handling	283	90.4%	30	9.6%
G Fraud And Forgery	5	71.4%	2	28.6%
H Criminal Damage	99	87.6%	14	12.4%
I Drugs Offences	66	94.3%	4	5.7%
J Public Order Offences	115	69.7%	50	30.3%
K All Other Offences (excluding Motoring)	99	79.2%	26	20.8%
L Motoring Offences	1,020	93.0%	77	7.0%
Admin Finalisations	0	0.0%	27	100.0%
TOTAL	1,939	85.2%	337	14.8%