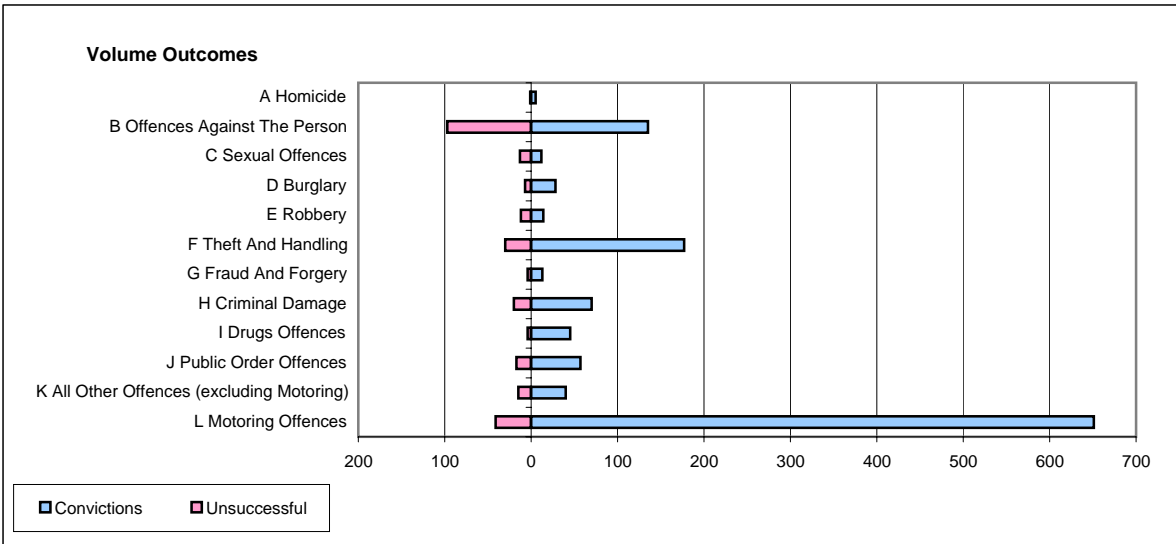
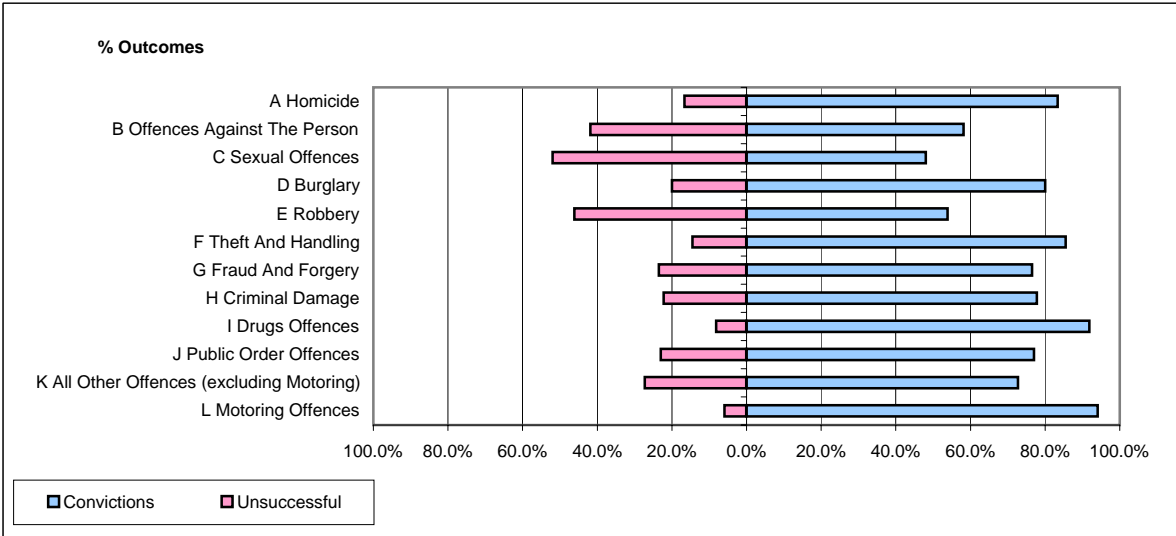


CPS OUTCOMES BY PRINCIPAL OFFENCE CATEGORY

February 2006

P18-Hertfordshire



	Convictions		Unsuccessful	
	Number of Defendants	%	Number of Defendants	%
A Homicide	5	83.3%	1	16.7%
B Offences Against The Person	135	58.2%	97	41.8%
C Sexual Offences	12	48.0%	13	52.0%
D Burglary	28	80.0%	7	20.0%
E Robbery	14	53.8%	12	46.2%
F Theft And Handling	177	85.5%	30	14.5%
G Fraud And Forgery	13	76.5%	4	23.5%
H Criminal Damage	70	77.8%	20	22.2%
I Drugs Offences	45	91.8%	4	8.2%
J Public Order Offences	57	77.0%	17	23.0%
K All Other Offences (excluding Motoring)	40	72.7%	15	27.3%
L Motoring Offences	651	94.1%	41	5.9%
Admin Finalisations	0	0.0%	34	100.0%
TOTAL	1,247	80.9%	295	19.1%