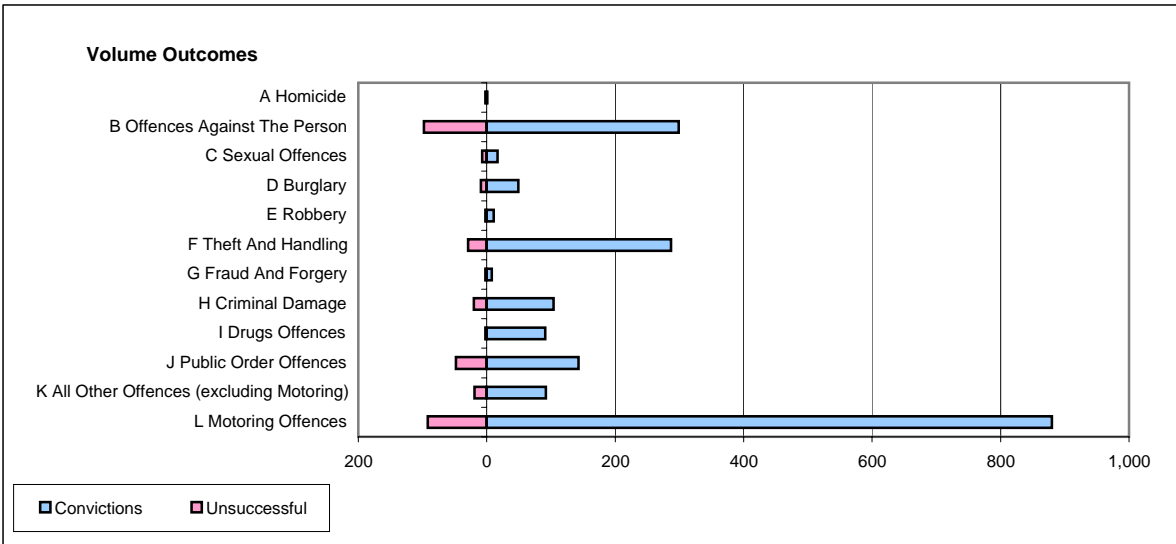
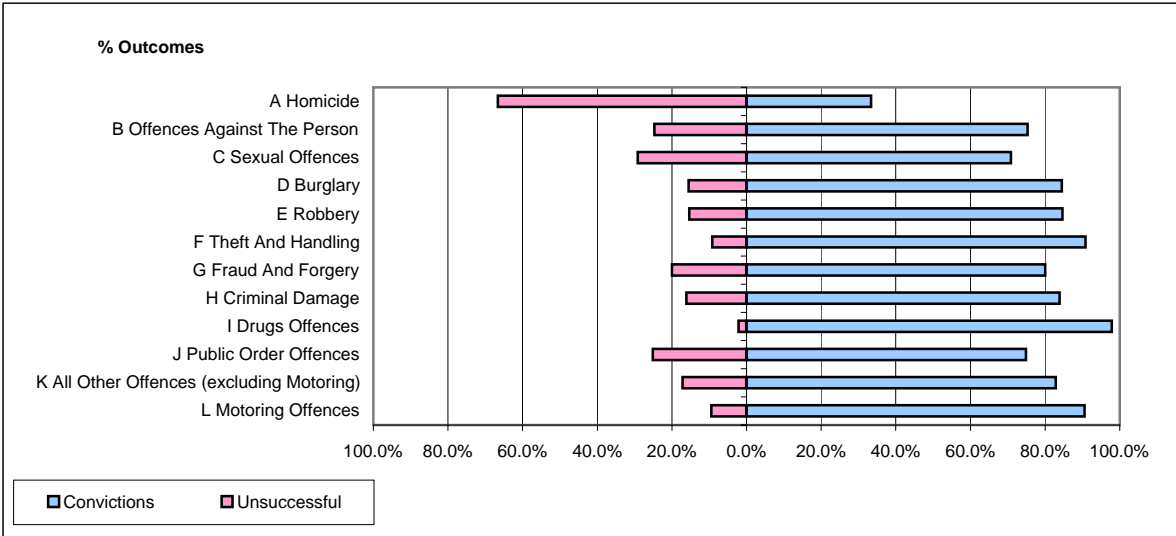


**CPS OUTCOMES BY PRINCIPAL OFFENCE CATEGORY**

**February 2006**

**P17-Hampshire**



	Convictions		Unsuccessful	
	Number of Defendants	%	Number of Defendants	%
<b>A Homicide</b>	<b>1</b>	<b>33.3%</b>	<b>2</b>	<b>66.7%</b>
<b>B Offences Against The Person</b>	<b>299</b>	<b>75.3%</b>	<b>98</b>	<b>24.7%</b>
<b>C Sexual Offences</b>	<b>17</b>	<b>70.8%</b>	<b>7</b>	<b>29.2%</b>
<b>D Burglary</b>	<b>49</b>	<b>84.5%</b>	<b>9</b>	<b>15.5%</b>
<b>E Robbery</b>	<b>11</b>	<b>84.6%</b>	<b>2</b>	<b>15.4%</b>
<b>F Theft And Handling</b>	<b>287</b>	<b>90.8%</b>	<b>29</b>	<b>9.2%</b>
<b>G Fraud And Forgery</b>	<b>8</b>	<b>80.0%</b>	<b>2</b>	<b>20.0%</b>
<b>H Criminal Damage</b>	<b>104</b>	<b>83.9%</b>	<b>20</b>	<b>16.1%</b>
<b>I Drugs Offences</b>	<b>91</b>	<b>97.8%</b>	<b>2</b>	<b>2.2%</b>
<b>J Public Order Offences</b>	<b>143</b>	<b>74.9%</b>	<b>48</b>	<b>25.1%</b>
<b>K All Other Offences (excluding Motoring)</b>	<b>92</b>	<b>82.9%</b>	<b>19</b>	<b>17.1%</b>
<b>L Motoring Offences</b>	<b>880</b>	<b>90.5%</b>	<b>92</b>	<b>9.5%</b>
<b>Admin Finalisations</b>	<b>0</b>	<b>0.0%</b>	<b>44</b>	<b>100.0%</b>
<b>TOTAL</b>	<b>1,982</b>	<b>84.1%</b>	<b>374</b>	<b>15.9%</b>