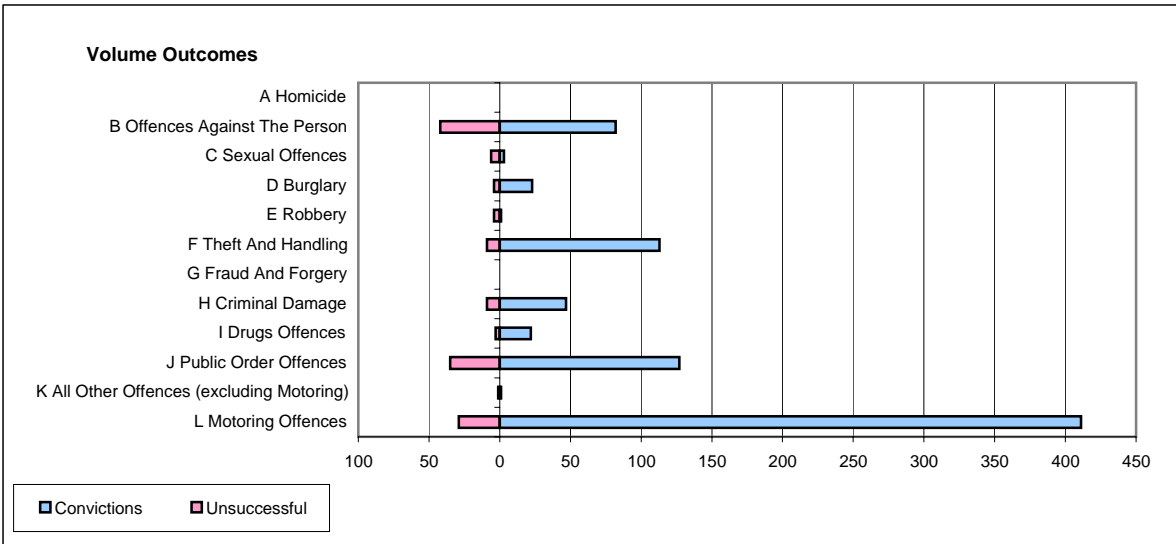
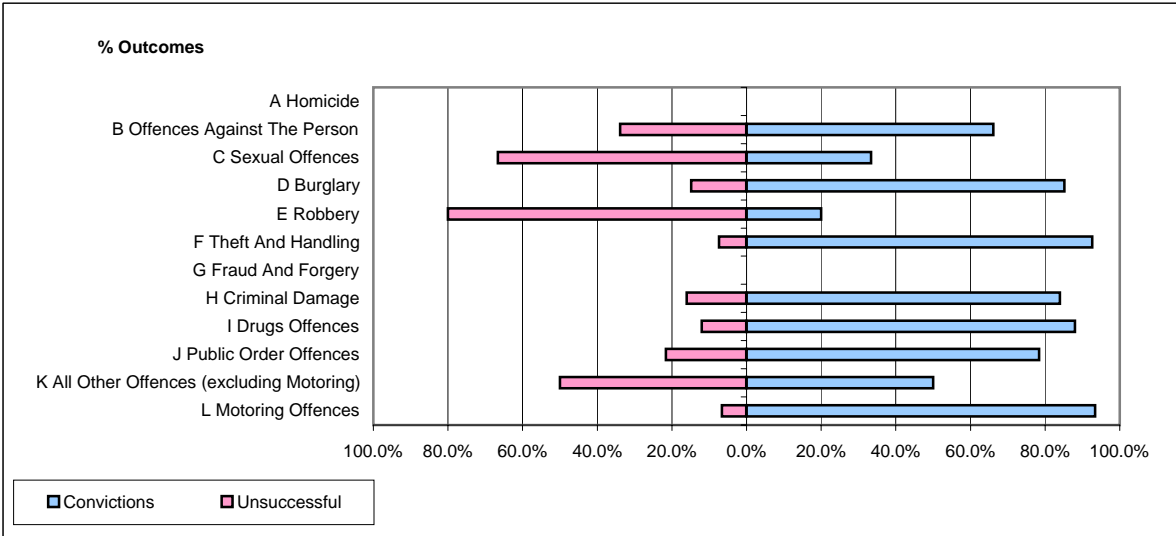


**CPS OUTCOMES BY PRINCIPAL OFFENCE CATEGORY**

**February 2006**

**P16-Gwent**



	Convictions		Unsuccessful	
	Number of Defendants	%	Number of Defendants	%
<b>A Homicide</b>	0	#DIV/0!	0	#DIV/0!
<b>B Offences Against The Person</b>	82	66.1%	42	33.9%
<b>C Sexual Offences</b>	3	33.3%	6	66.7%
<b>D Burglary</b>	23	85.2%	4	14.8%
<b>E Robbery</b>	1	20.0%	4	80.0%
<b>F Theft And Handling</b>	113	92.6%	9	7.4%
<b>G Fraud And Forgery</b>	0	#DIV/0!	0	#DIV/0!
<b>H Criminal Damage</b>	47	83.9%	9	16.1%
<b>I Drugs Offences</b>	22	88.0%	3	12.0%
<b>J Public Order Offences</b>	127	78.4%	35	21.6%
<b>K All Other Offences (excluding Motoring)</b>	1	50.0%	1	50.0%
<b>L Motoring Offences</b>	411	93.4%	29	6.6%
<b>Admin Finalisations</b>	0	0.0%	8	100.0%
<b>TOTAL</b>	830	84.7%	150	15.3%