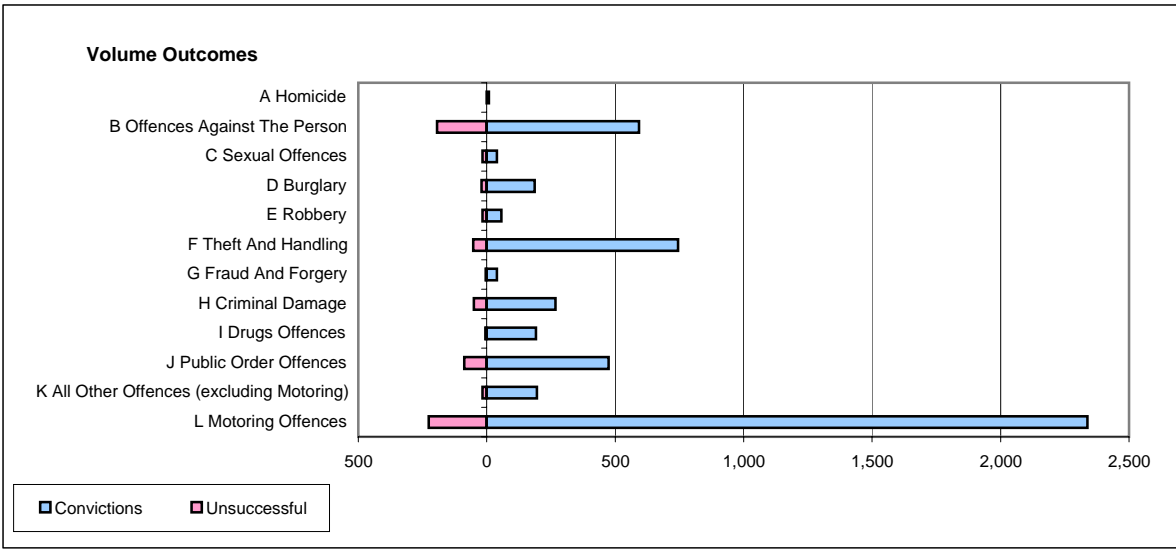
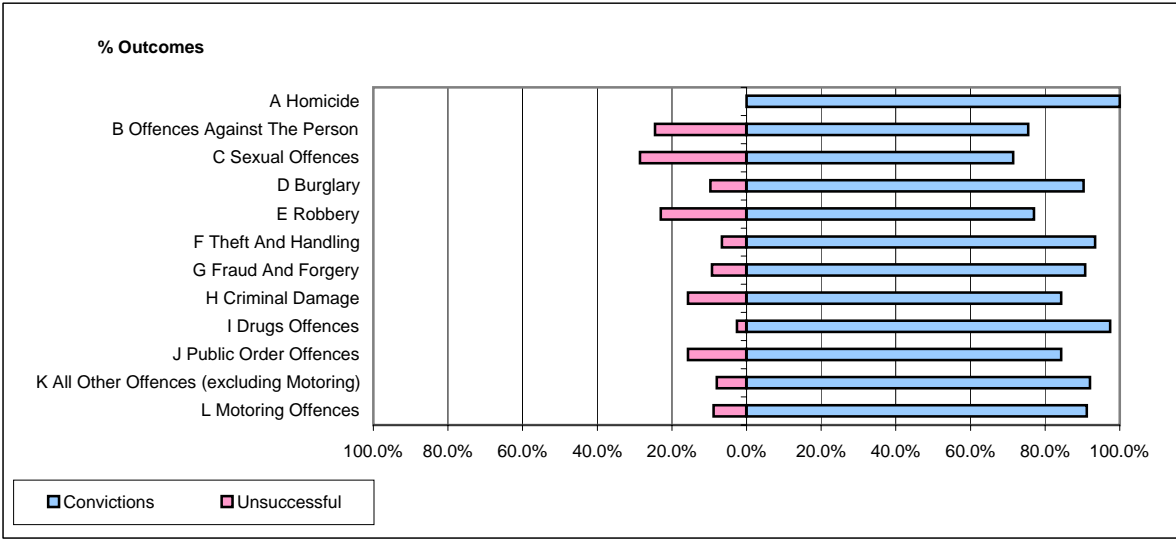


**CPS OUTCOMES BY PRINCIPAL OFFENCE CATEGORY**

**February 2006**

**P15-GreaterManchester**



	Convictions		Unsuccessful	
	Number of Defendants	%	Number of Defendants	%
<b>A Homicide</b>	<b>8</b>	<b>100.0%</b>	<b>0</b>	<b>0.0%</b>
<b>B Offences Against The Person</b>	<b>593</b>	<b>75.4%</b>	<b>193</b>	<b>24.6%</b>
<b>C Sexual Offences</b>	<b>40</b>	<b>71.4%</b>	<b>16</b>	<b>28.6%</b>
<b>D Burglary</b>	<b>186</b>	<b>90.3%</b>	<b>20</b>	<b>9.7%</b>
<b>E Robbery</b>	<b>57</b>	<b>77.0%</b>	<b>17</b>	<b>23.0%</b>
<b>F Theft And Handling</b>	<b>745</b>	<b>93.4%</b>	<b>53</b>	<b>6.6%</b>
<b>G Fraud And Forgery</b>	<b>39</b>	<b>90.7%</b>	<b>4</b>	<b>9.3%</b>
<b>H Criminal Damage</b>	<b>268</b>	<b>84.3%</b>	<b>50</b>	<b>15.7%</b>
<b>I Drugs Offences</b>	<b>191</b>	<b>97.4%</b>	<b>5</b>	<b>2.6%</b>
<b>J Public Order Offences</b>	<b>474</b>	<b>84.3%</b>	<b>88</b>	<b>15.7%</b>
<b>K All Other Offences (excluding Motoring)</b>	<b>195</b>	<b>92.0%</b>	<b>17</b>	<b>8.0%</b>
<b>L Motoring Offences</b>	<b>2,338</b>	<b>91.2%</b>	<b>226</b>	<b>8.8%</b>
<b>Admin Finalisations</b>	<b>0</b>	<b>0.0%</b>	<b>323</b>	<b>100.0%</b>
<b>TOTAL</b>	<b>5,134</b>	<b>83.5%</b>	<b>1,012</b>	<b>16.5%</b>