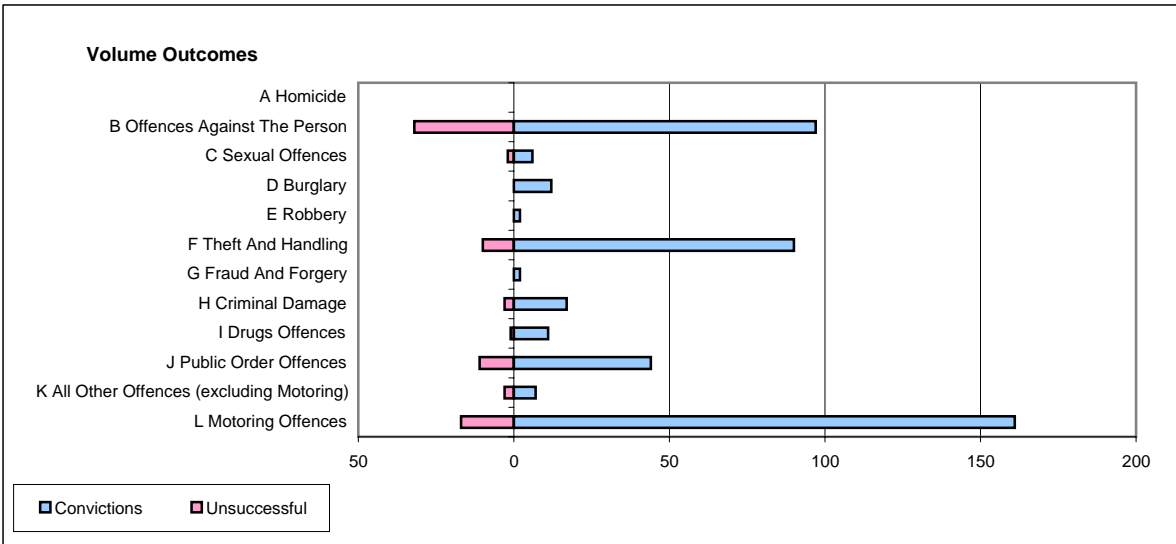
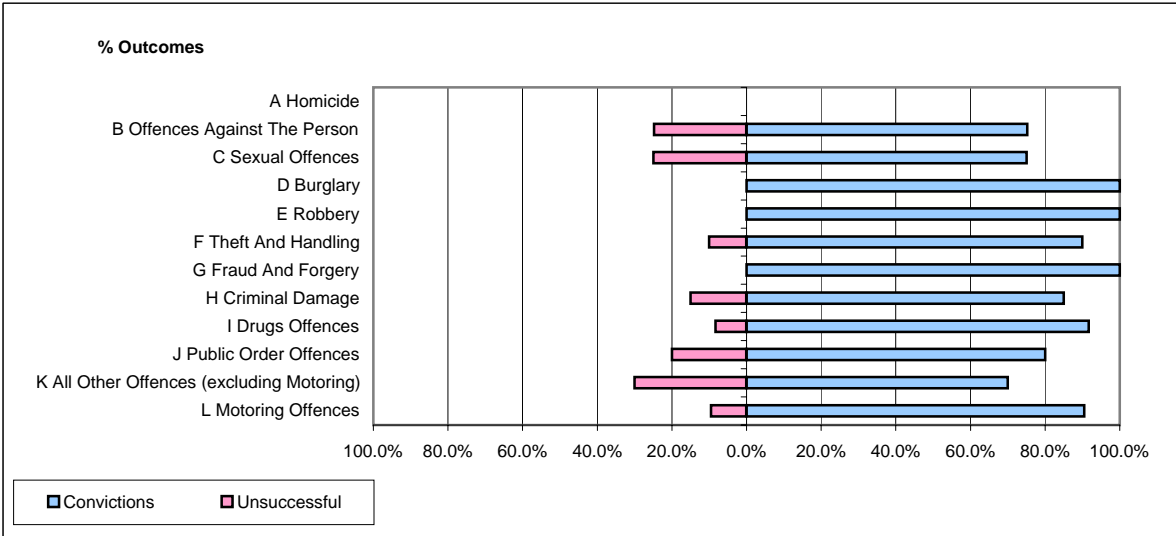


**CPS OUTCOMES BY PRINCIPAL OFFENCE CATEGORY**

**February 2006**

**P14-Gloucestershire**



	Convictions		Unsuccessful	
	Number of Defendants	%	Number of Defendants	%
<b>A Homicide</b>	0	#DIV/0!	0	#DIV/0!
<b>B Offences Against The Person</b>	97	75.2%	32	24.8%
<b>C Sexual Offences</b>	6	75.0%	2	25.0%
<b>D Burglary</b>	12	100.0%	0	0.0%
<b>E Robbery</b>	2	100.0%	0	0.0%
<b>F Theft And Handling</b>	90	90.0%	10	10.0%
<b>G Fraud And Forgery</b>	2	100.0%	0	0.0%
<b>H Criminal Damage</b>	17	85.0%	3	15.0%
<b>I Drugs Offences</b>	11	91.7%	1	8.3%
<b>J Public Order Offences</b>	44	80.0%	11	20.0%
<b>K All Other Offences (excluding Motoring)</b>	7	70.0%	3	30.0%
<b>L Motoring Offences</b>	161	90.4%	17	9.6%
<b>Admin Finalisations</b>	0	0.0%	19	100.0%
<b>TOTAL</b>	449	82.1%	98	17.9%