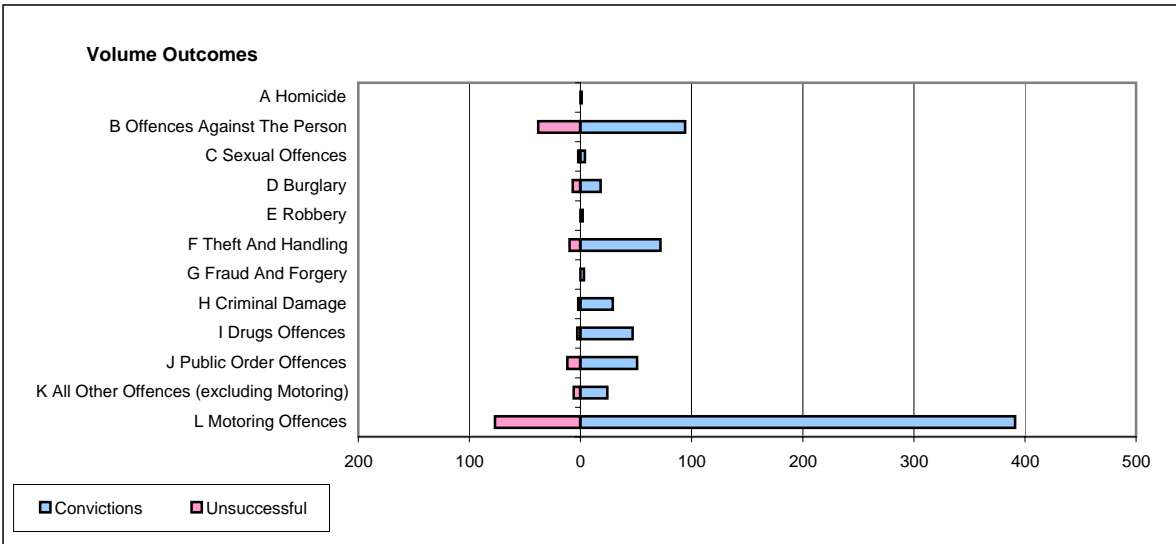
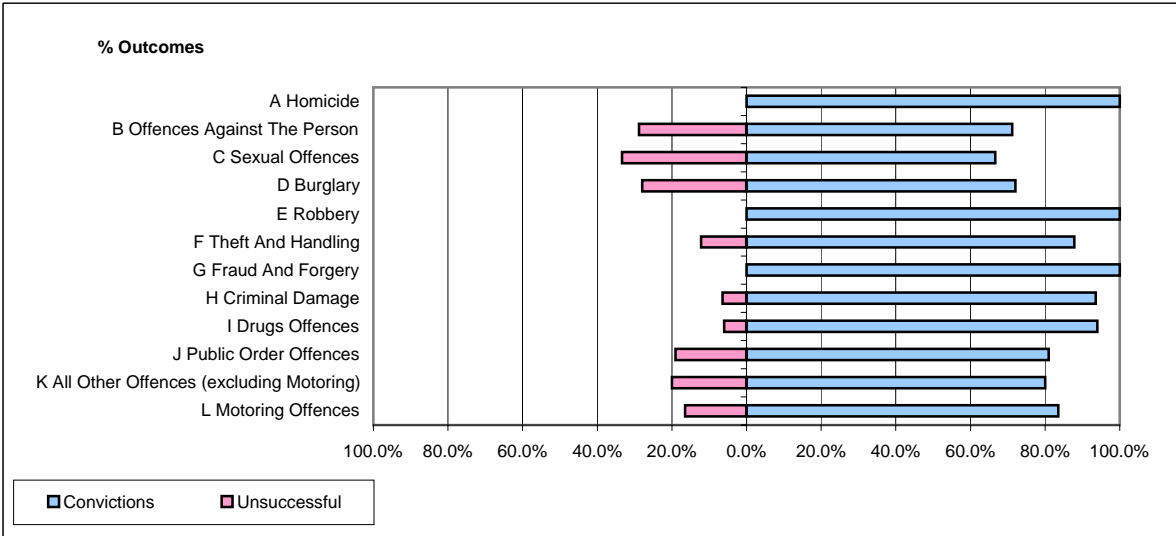


**CPS OUTCOMES BY PRINCIPAL OFFENCE CATEGORY**

**February 2006**

**P12-DyfedPowys**



	Convictions		Unsuccessful	
	Number of Defendants	%	Number of Defendants	%
<b>A Homicide</b>	<b>1</b>	<b>100.0%</b>	<b>0</b>	<b>0.0%</b>
<b>B Offences Against The Person</b>	<b>94</b>	<b>71.2%</b>	<b>38</b>	<b>28.8%</b>
<b>C Sexual Offences</b>	<b>4</b>	<b>66.7%</b>	<b>2</b>	<b>33.3%</b>
<b>D Burglary</b>	<b>18</b>	<b>72.0%</b>	<b>7</b>	<b>28.0%</b>
<b>E Robbery</b>	<b>2</b>	<b>100.0%</b>	<b>0</b>	<b>0.0%</b>
<b>F Theft And Handling</b>	<b>72</b>	<b>87.8%</b>	<b>10</b>	<b>12.2%</b>
<b>G Fraud And Forgery</b>	<b>3</b>	<b>100.0%</b>	<b>0</b>	<b>0.0%</b>
<b>H Criminal Damage</b>	<b>29</b>	<b>93.5%</b>	<b>2</b>	<b>6.5%</b>
<b>I Drugs Offences</b>	<b>47</b>	<b>94.0%</b>	<b>3</b>	<b>6.0%</b>
<b>J Public Order Offences</b>	<b>51</b>	<b>81.0%</b>	<b>12</b>	<b>19.0%</b>
<b>K All Other Offences (excluding Motoring)</b>	<b>24</b>	<b>80.0%</b>	<b>6</b>	<b>20.0%</b>
<b>L Motoring Offences</b>	<b>391</b>	<b>83.5%</b>	<b>77</b>	<b>16.5%</b>
<b>Admin Finalisations</b>	<b>0</b>	<b>0.0%</b>	<b>13</b>	<b>100.0%</b>
<b>TOTAL</b>	<b>736</b>	<b>81.2%</b>	<b>170</b>	<b>18.8%</b>