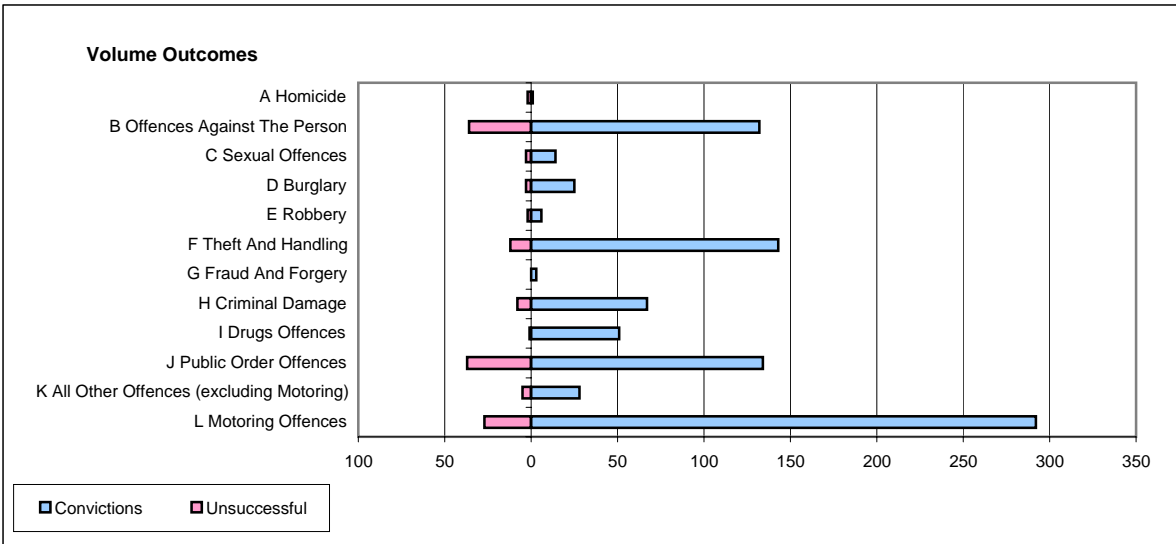
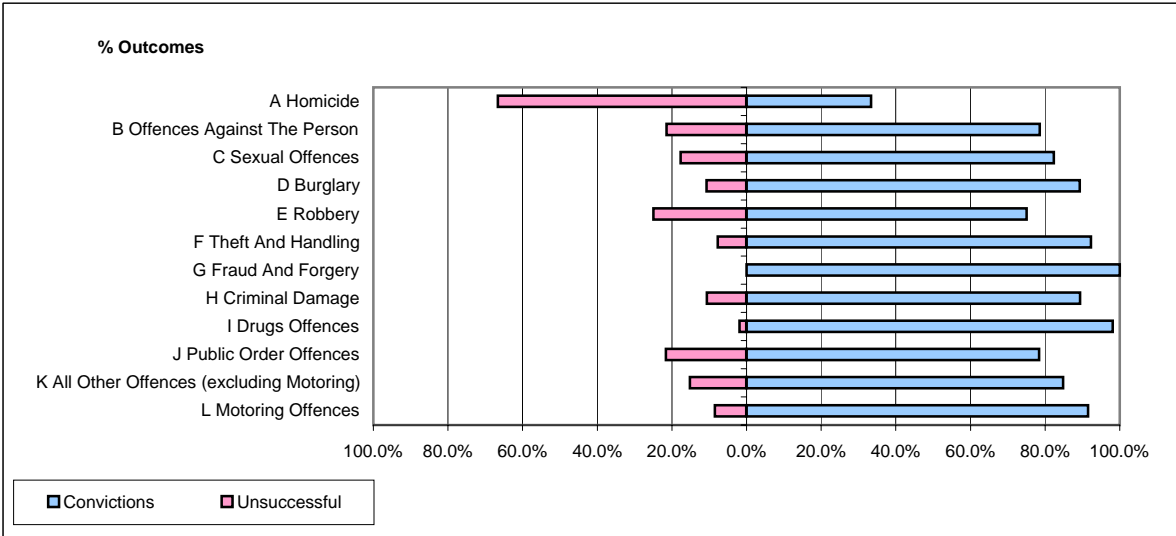


CPS OUTCOMES BY PRINCIPAL OFFENCE CATEGORY

February 2006

P11-Durham



	Convictions		Unsuccessful	
	Number of Defendants	%	Number of Defendants	%
A Homicide	1	33.3%	2	66.7%
B Offences Against The Person	132	78.6%	36	21.4%
C Sexual Offences	14	82.4%	3	17.6%
D Burglary	25	89.3%	3	10.7%
E Robbery	6	75.0%	2	25.0%
F Theft And Handling	143	92.3%	12	7.7%
G Fraud And Forgery	3	100.0%	0	0.0%
H Criminal Damage	67	89.3%	8	10.7%
I Drugs Offences	51	98.1%	1	1.9%
J Public Order Offences	134	78.4%	37	21.6%
K All Other Offences (excluding Motoring)	28	84.8%	5	15.2%
L Motoring Offences	292	91.5%	27	8.5%
Admin Finalisations	0	0.0%	9	100.0%
TOTAL	896	86.1%	145	13.9%