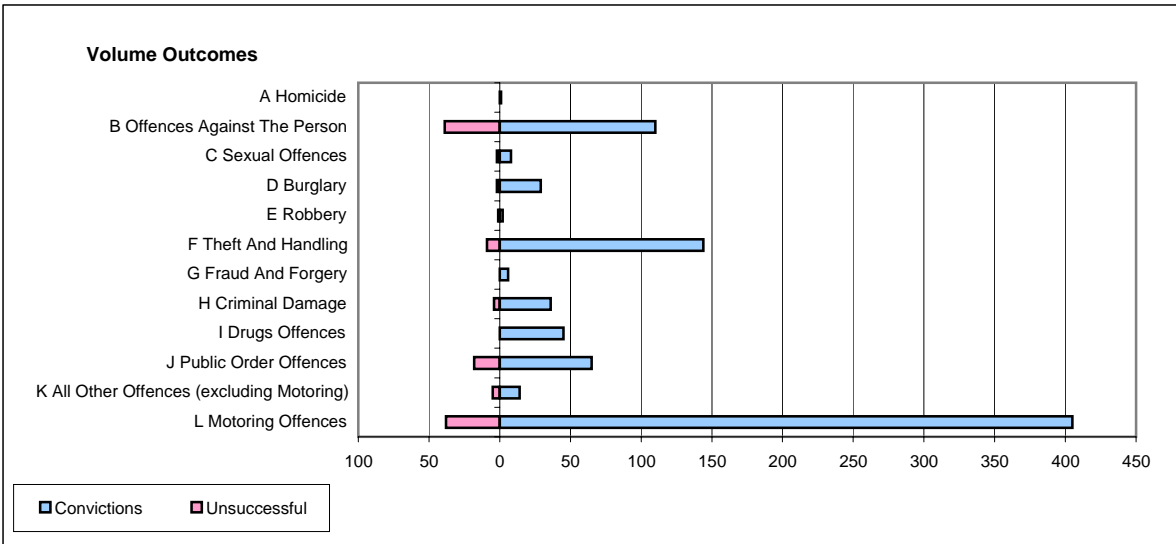
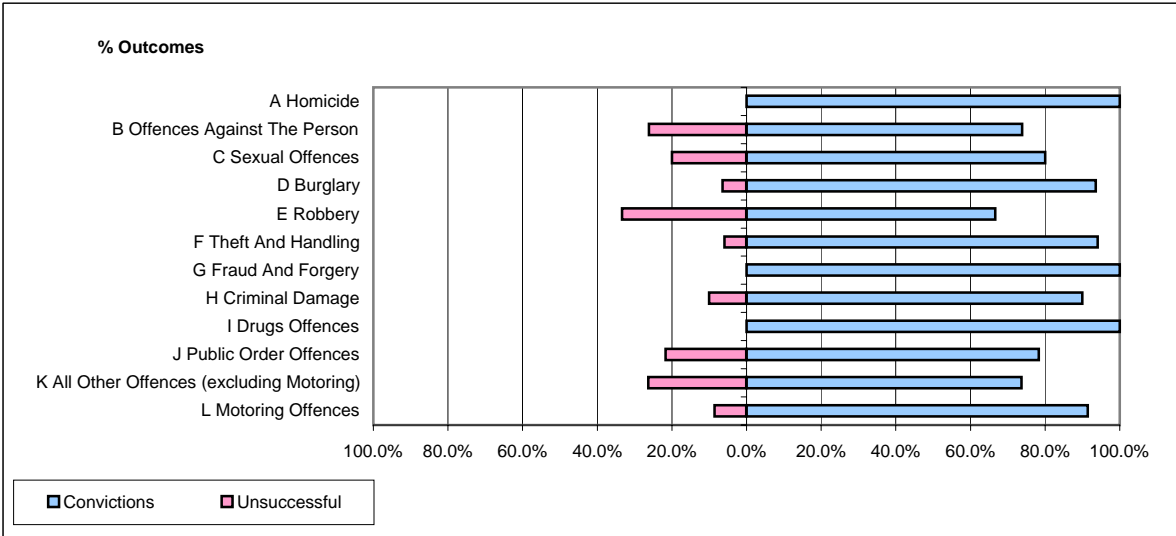


CPS OUTCOMES BY PRINCIPAL OFFENCE CATEGORY

February 2006

P10-Dorset



	Convictions		Unsuccessful	
	Number of Defendants	%	Number of Defendants	%
A Homicide	1	100.0%	0	0.0%
B Offences Against The Person	110	73.8%	39	26.2%
C Sexual Offences	8	80.0%	2	20.0%
D Burglary	29	93.5%	2	6.5%
E Robbery	2	66.7%	1	33.3%
F Theft And Handling	144	94.1%	9	5.9%
G Fraud And Forgery	6	100.0%	0	0.0%
H Criminal Damage	36	90.0%	4	10.0%
I Drugs Offences	45	100.0%	0	0.0%
J Public Order Offences	65	78.3%	18	21.7%
K All Other Offences (excluding Motoring)	14	73.7%	5	26.3%
L Motoring Offences	405	91.4%	38	8.6%
Admin Finalisations	0	0.0%	22	100.0%
TOTAL	865	86.1%	140	13.9%